

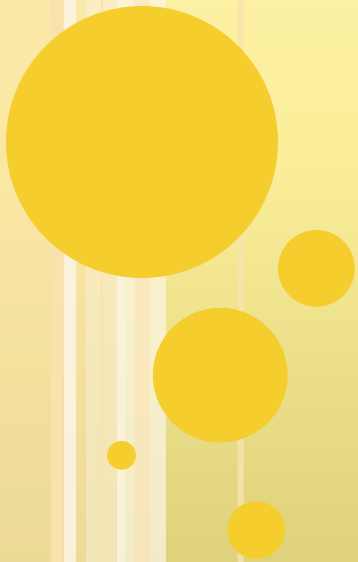


# LEARNING & EFFECTIVENESS

EWC August Board Meeting  
Tuesday August 12, 2014



# **SPRING 2014 ENROLLMENT REPORT**





# SPRING 2014 ENROLLMENT

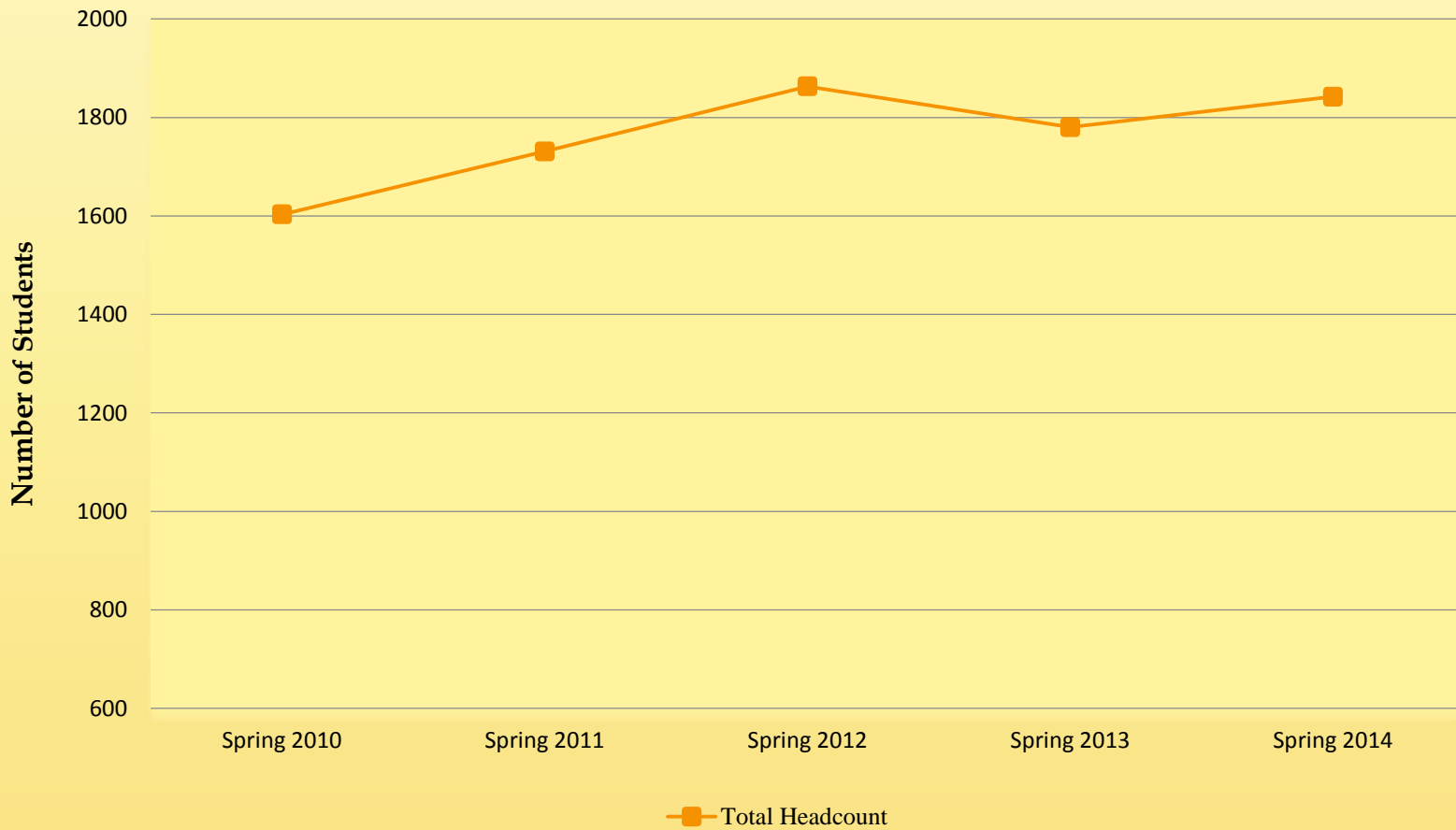
- Total Headcount 1842
  - Up 62 (8.8%) students from Spring 2013
- Total FTE 1194.79
  - Up 49.08 (4.3%) FTE from Spring 2013
- Returning Students were up 40 full-time students and up 34 part-time students





# SPRING HEADCOUNT TRENDS

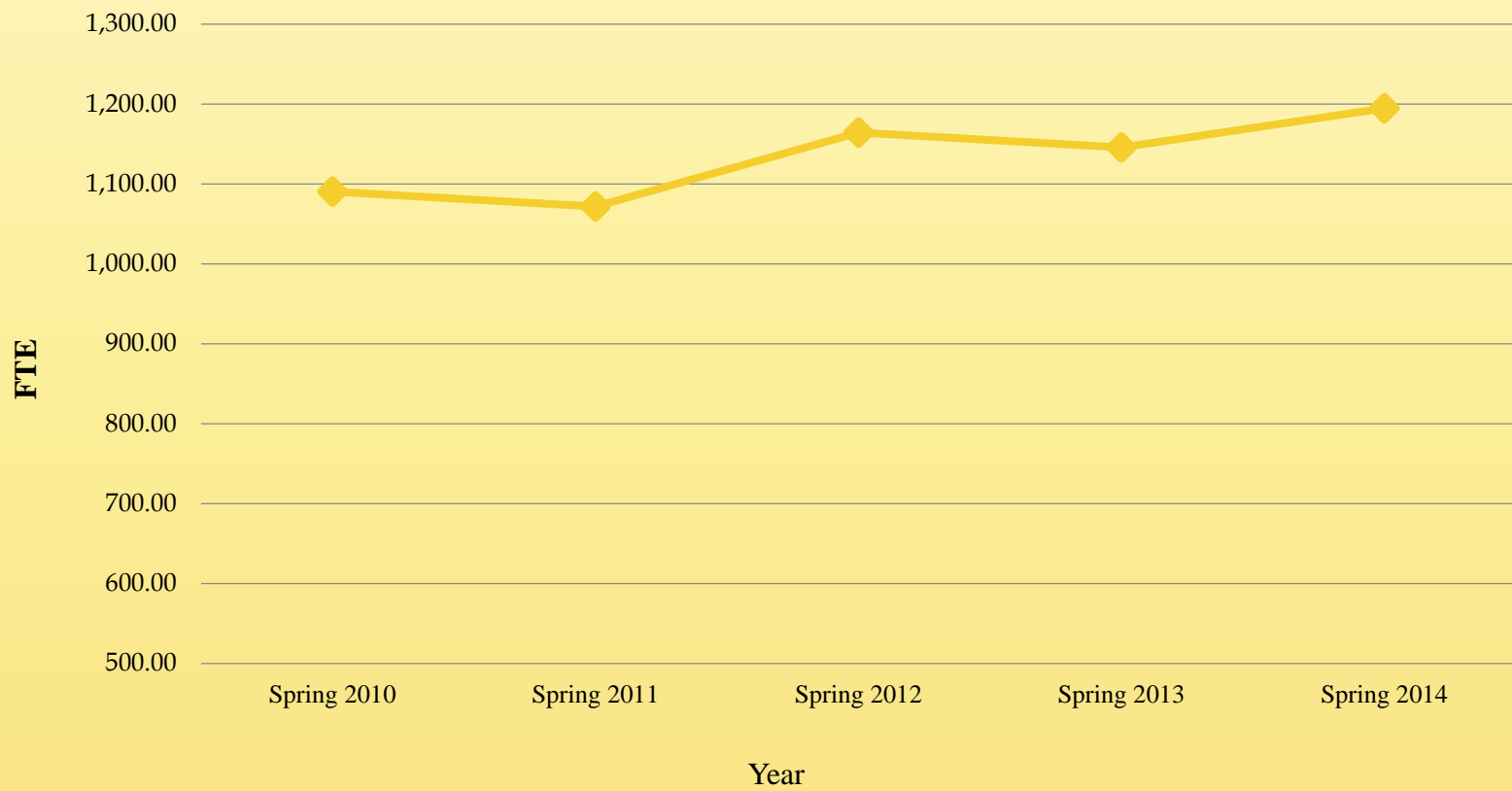
## Spring Headcount Trends





# SPRING FTE TRENDS

## Spring FTE Trends





# ON CAMPUS ENROLLMENT HIGHLIGHTS

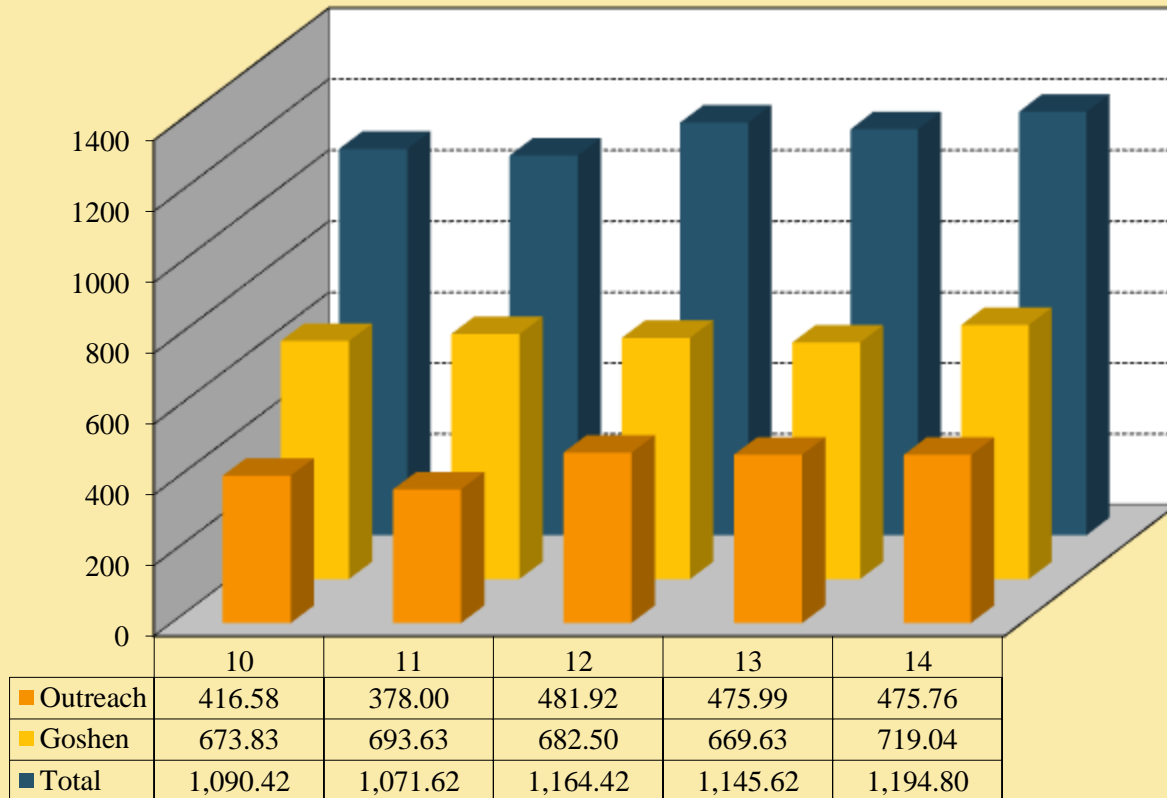
- 404 Full-Time Wyoming Students
  - 138 Goshen
  - 65 Converse
  - 33 Laramie
- 179 Full-time Non-Resident Students
  - 79 Nebraska
  - 37 Colorado
  - 17 South Dakota
  - 11 Montana
  - 34 Other States
  - 1 International





# SPRING 2014 FTE BY LOCATION

Spring FTE By Student Location





# HIGH SCHOOL STUDENTS

- Represent 37.4% of all Students and 25.1% of all FTE
- 69 Full-Time Students - 43 concurrent only, 5 regular only, and 21 both regular and concurrent
- 619 Part-Time Students- 522 concurrent only, 18 regular only, and 79 both regular and concurrent
- 155 concurrent courses

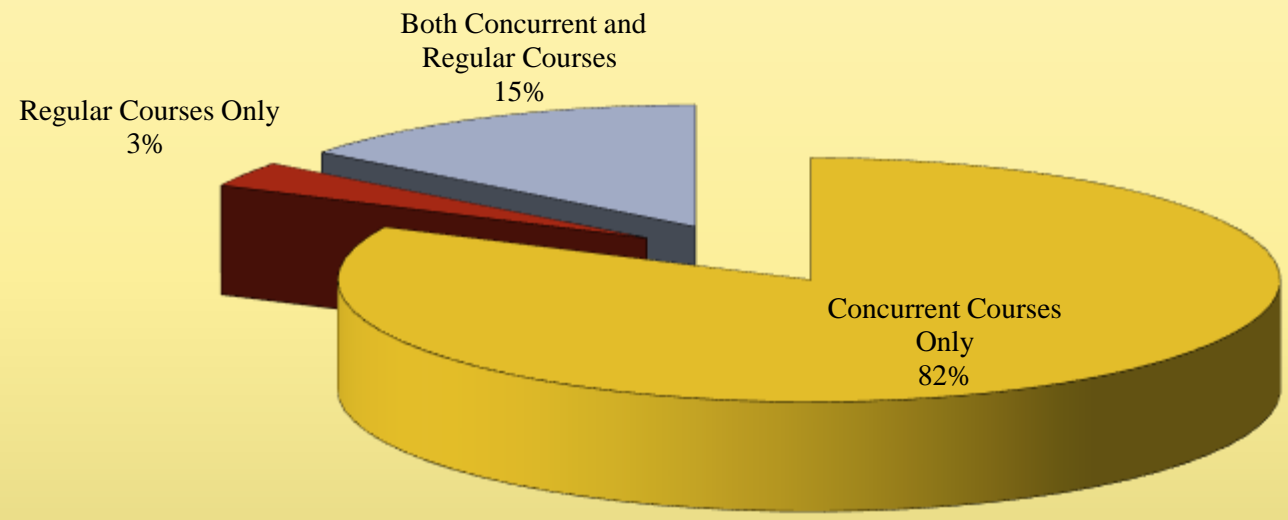






# HIGH SCHOOL ENROLLMENT BY STUDENT TYPE

High School Enrollment by Student Type





# DISTANCE EDUCATION HIGHLIGHTS

- Increase of 22 classes over Spring 2013
- Decrease of 87 students
  - Down 32 Full-Time Students
  - Down 55 Part-Time Students
- Increase of one FTE compared to Spring 2012
- Decrease of 20 Distance Students outside the Service Area





# STUDENT MAJORS

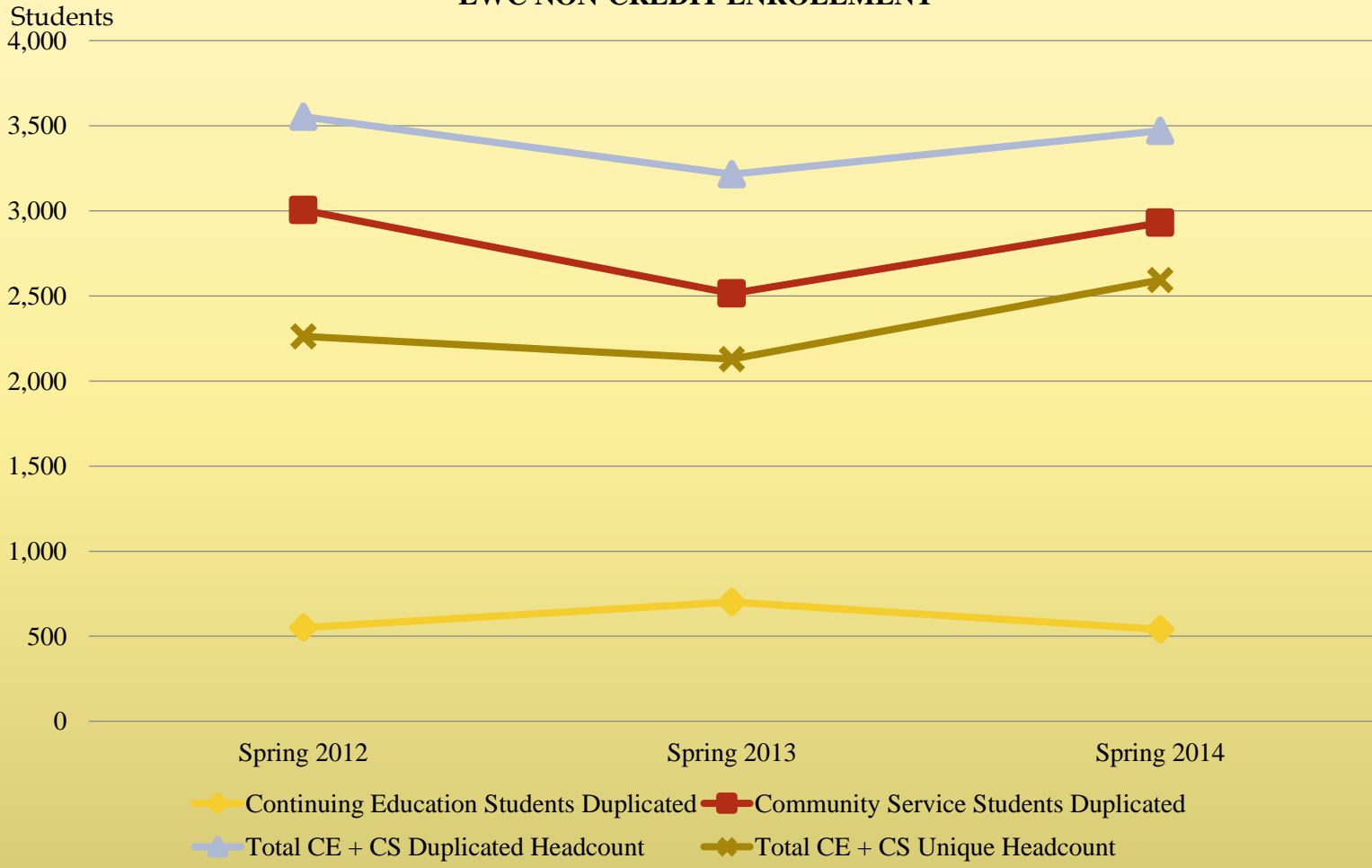
- Interdisciplinary Studies, Welding and Joining Technology, and Veterinary Technology are our highest enrollment programs
- The Undeclared category includes the high school students had an increase of 104 students
- Veterinary Aide has been added and that is why Veterinary Technology had a decrease





# NON-CREDIT EDUCATION

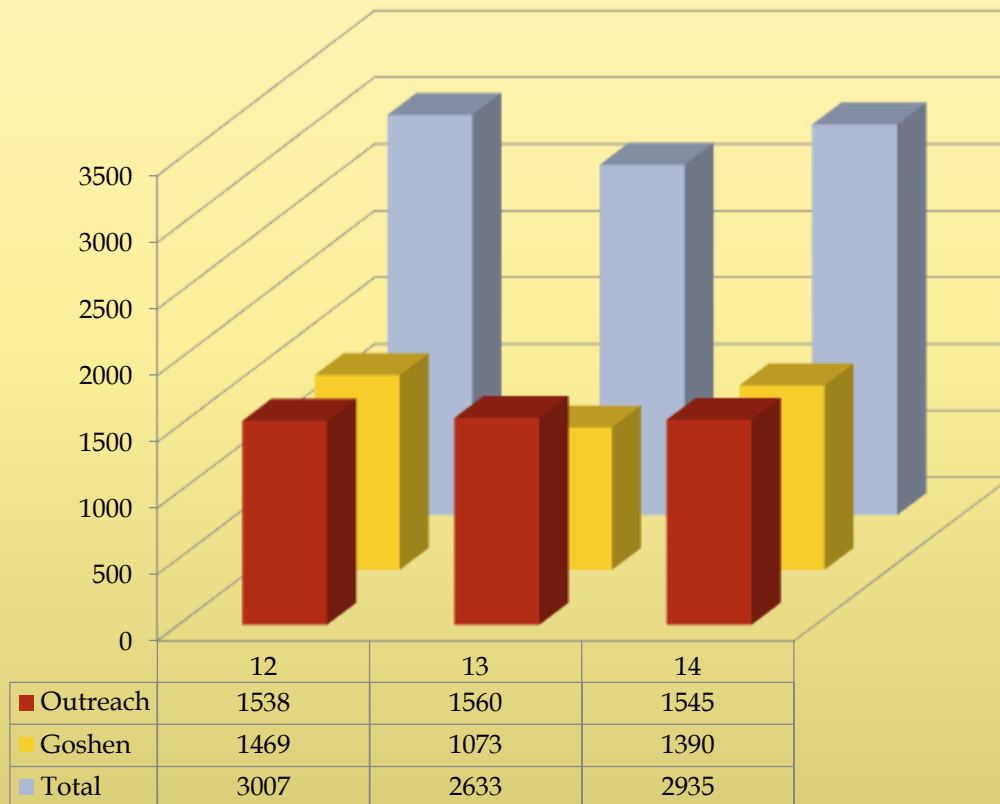
## EWC NON-CREDIT ENROLLMENT





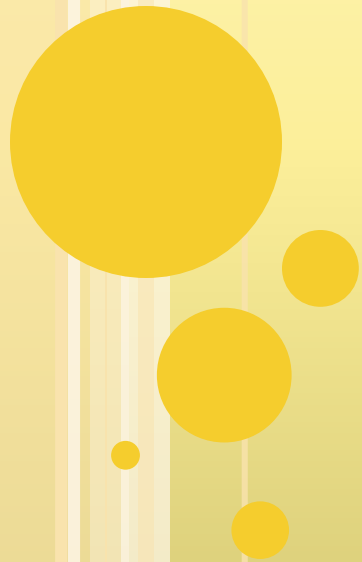
# COMMUNITY EDUCATION NON-CREDIT BY LOCATION

## Community Education by Location





# **2013-2014 ANNUAL ENROLLMENT COMPARISON SUMMARY**





# ANNUAL COMPARISON

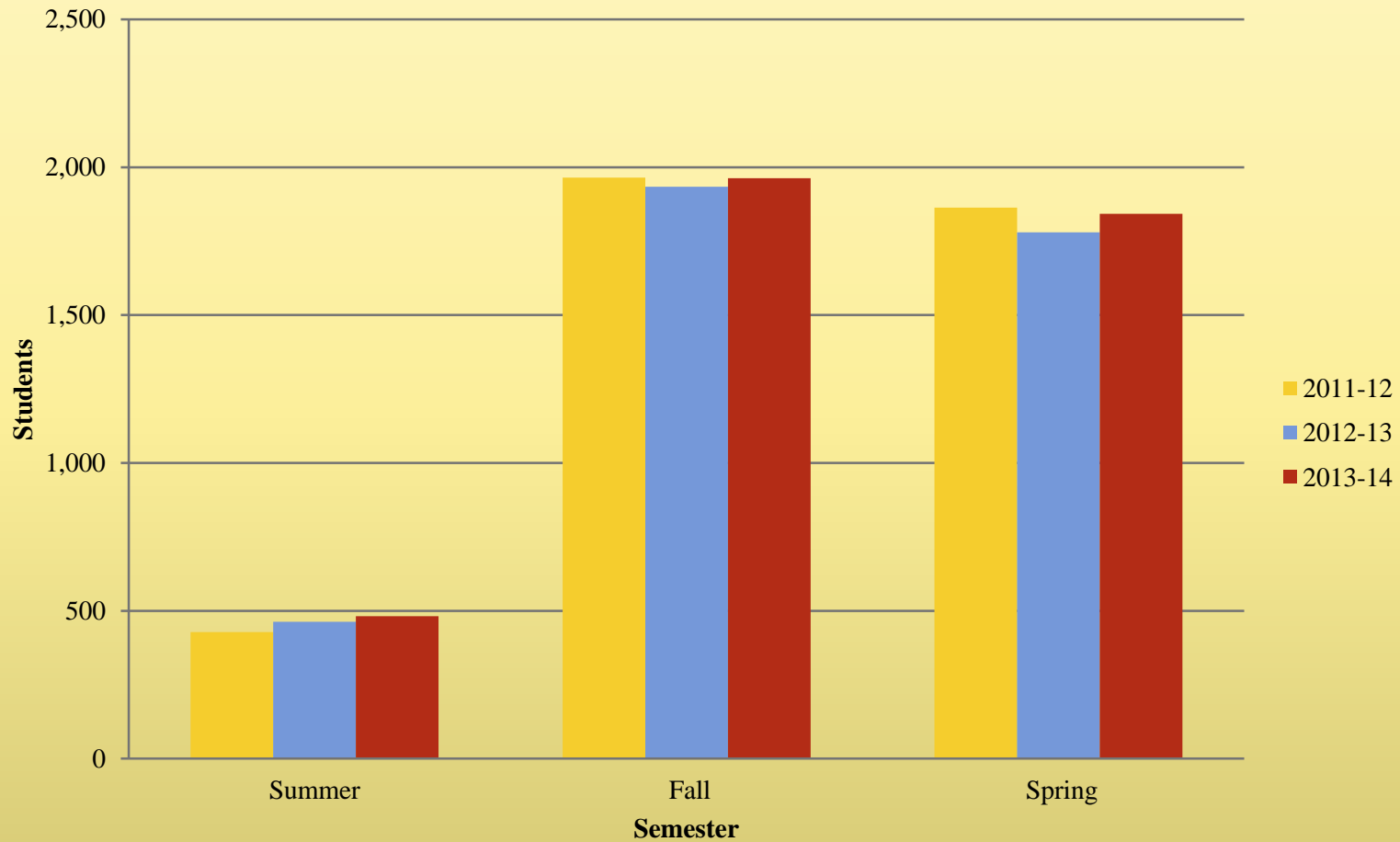
- Total Headcount increased by 55 (2.6%)
  - Outreach increased by 4 (0.4%)
  - Goshen increased by 56 (4.8%)
  
- Total FTE increased by 54.56 (4.2%)
  - Outreach decreased by 10.36 (1.8%)
  - Goshen increased by 64.67 (8.9%)





# ANNUAL HEADCOUNT COMPARISON

Annual Headcount by Term

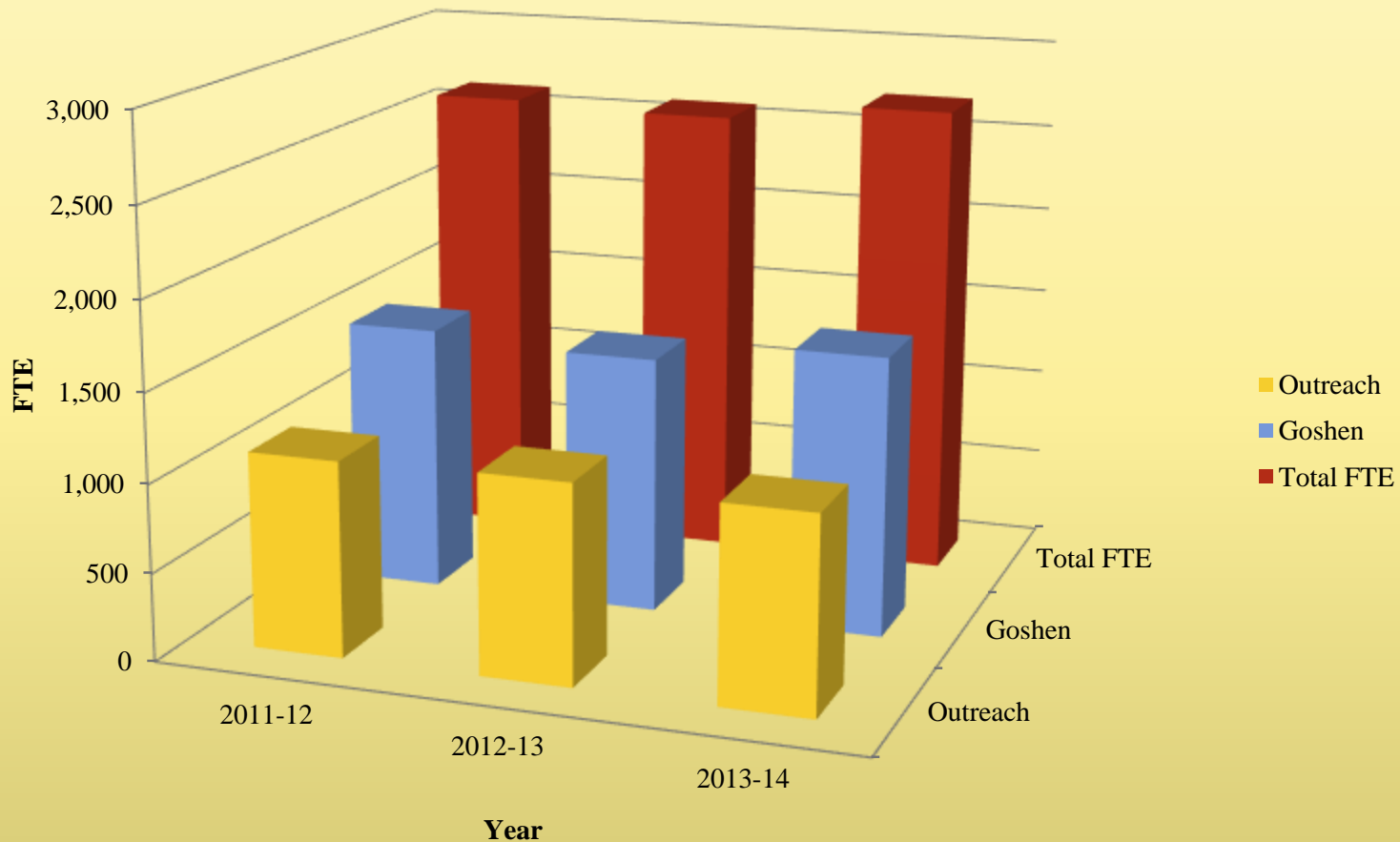






# ANNUAL FTE COMPARISON

FTE by Location





# CONCURRENT ENROLLMENT ANNUAL HIGHLIGHTS

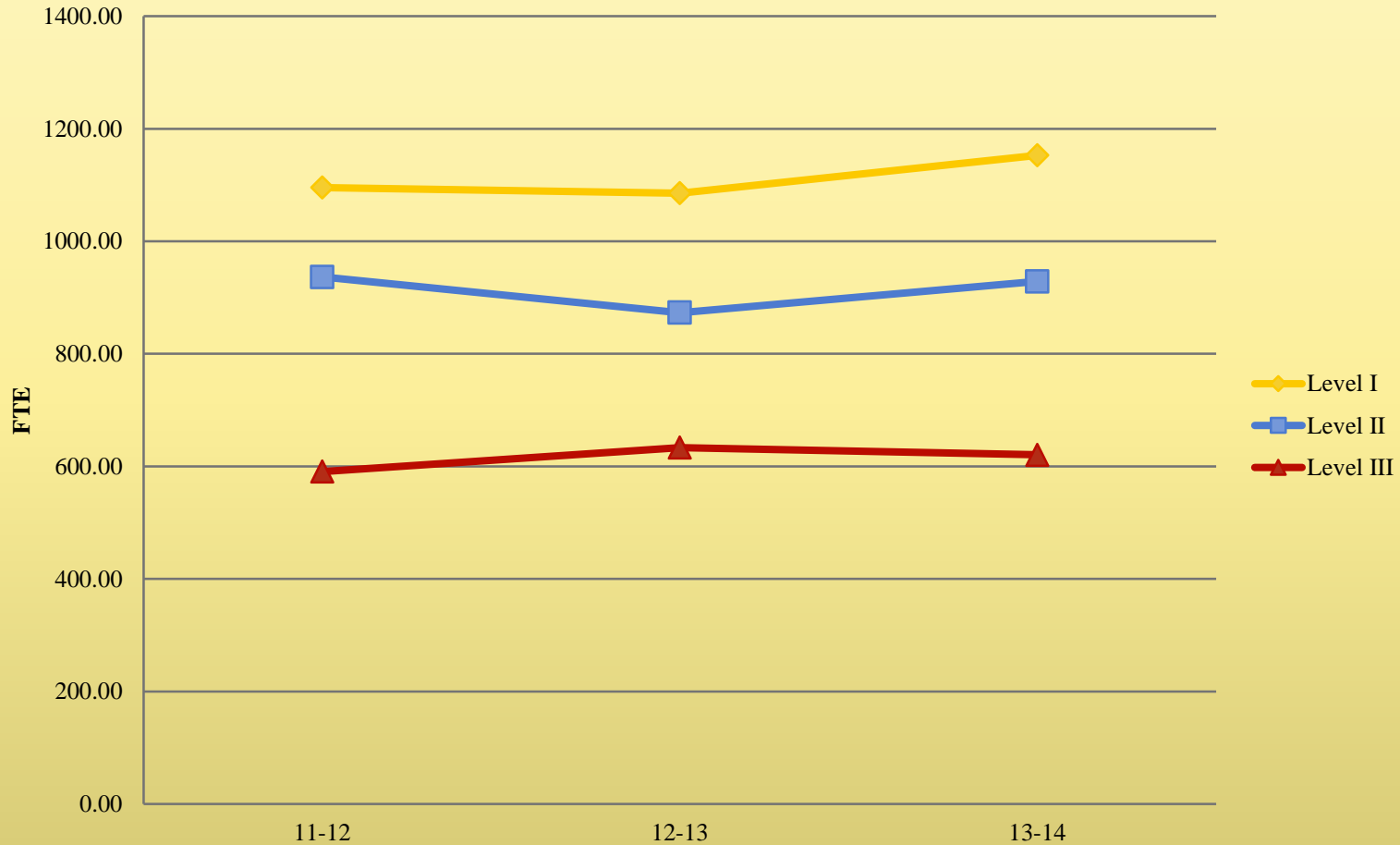
- Total Concurrent FTE increased by 80.36 FTE (12.1%)
- Total Concurrent Headcount increased by 152 students (19.1%)
- Total Concurrent Sections increased by 26 sections (7.85%)





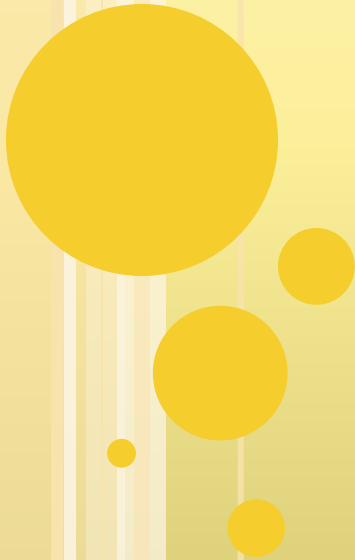
# EWC ANNUAL FTE BY FUNDING LEVEL

## EWC Annual FTE by Funding Level





# **NATIONAL COMMUNITY COLLEGE BENCHMARK PROJECT (NCCBP)**





# CREDIT COLLEGE-LEVEL RETENTION, SUCCESS

## Fall Grades

Total A, B, C, P, D, F, and W Grades:	5,675
Total A, B, C, P, D, and F Grades:	5,107
Total A, B, C, and P Grades:	4,730
<i>Retention Rate:</i>	89.99%
<i>Enrollee Success Rate:</i>	83.35%
<i>Completer Success Rate:</i>	92.62%





# CREDIT DEVELOPMENTAL RETENTION, SUCCESS

## Math

Total Grades in Developmental / Remedial Courses:	224
Total A, B, C, P, D and F Grades:	178
Total A, B, C and P Grades:	153
<i>Retention Rate:</i>	79.46%
<i>Enrollee Success Rate:</i>	68.3%
<i>Completer Success Rate:</i>	85.96%

## Writing

Total Grades in Developmental / Remedial Courses:	96
Total A, B, C, P, D and F Grades:	78
Total A, B, C and P Grades:	62
<i>Retention Rate:</i>	81.25%
<i>Enrollee Success Rate:</i>	64.58%
<i>Completer Success Rate:</i>	79.49%



# CREDIT DEVELOPMENTAL RETENTION, SUCCESS- CONTINUED

## Reading

Total Grades in Developmental / Remedial Courses:	20
Total A, B, C, P, D and F Grades:	13
Total A, B, C and P Grades:	13
<i>Retention Rate:</i>	65%
<i>Enrollee Success Rate:</i>	65%
<i>Completer Success Rate:</i>	100%



# QUESTIONS

