



# Campus Master Plan: Essential Guide







3200 West C Street  
Torrington, WY 82240  
307.532.8200  
<https://ewc.wy.edu/>

## College Leadership

### President

Dr. Jeffrey Hawes

### Vice President Douglas Campus

Dr. Margaret Farley

### Vice President Student & Academic Services, Interim,

John Hansen

### Vice President Administrative Services, Interim,

Patrick Korell

## Board of Trustees

### Chairperson

Jackie Van Mark

### Trustees

Randy Adams

Robert Baumgartner

Doug Mercer

Katherine Patrick

Kurt Sittner

Rick Vonburg

### Advisory Member

Jim Wilcox





# Our Vision

*Dear students, faculty, staff, and esteemed members of our community,*

As the President of Eastern Wyoming College, I am honored to introduce a pivotal and visionary document that will shape the future of our institution. The Master Plan embodies our commitment to excellence, innovation, and community service. At the heart of our mission lies the unwavering dedication to provide accessible, high-quality education empowering individuals and strengthening our community. As we stand at the threshold of a new era, it is crucial to have a road map to guide us in achieving our shared vision for the future.

Our Master Plan is not merely a blueprint for buildings; it is a strategic document reflecting our values, aspirations, and dedication to the success of our students. It represents the culmination of years of collaboration, foresight, and planning involving our dedicated faculty, staff, students, and community partners.

This plan is our commitment to creating a vibrant and inclusive learning environment. It envisions state-of-the-art facilities fostering creativity, innovation, and collaboration. It addresses the growing needs of our community, offering improved accessibility and resources to ensure all members of our community have the tools they need to succeed.

In our ever-changing world, it is imperative we remain adaptable and forward-thinking. This Master Plan does just that by incorporating sustainable practices, cutting-edge technology, and flexible learning spaces to meet the evolving needs of our students and industry partners. As we embark on this journey, we are reminded of the significant role our community plays in our success. We have engaged in extensive dialogue with our community members to ensure this plan aligns with their aspirations, and it serves as a symbol of our enduring partnership.

The Master Plan is more than bricks and mortar; it is a commitment to our students, employees and community of our dedication to providing them with the best

possible environment for their educational journey. It is a commitment to our faculty and staff that we will deliver the tools and resources they need to excel in their roles. It is a commitment to our community that we will continue to be a beacon of education, innovation, and progress. In the pages of this plan, you will find a blueprint for our future—one that is marked by growth, inclusivity, and a relentless pursuit of excellence. It represents our unwavering commitment to transforming lives and strengthening our community.

I encourage each and every one of you to engage with this plan, to provide your insights and ideas, and to join us on this exciting journey toward a brighter future for Eastern Wyoming College. Together, we will build a foundation for success benefiting generations to come.

Thank you for your continued support, and I look forward to the remarkable achievements that lie ahead as we bring this Master Plan to life.

Sincerely,


***Dr. Jeffrey Hawes***  
*President*  
*Eastern*  
*Wyoming*  
*College*







# Table of Contents



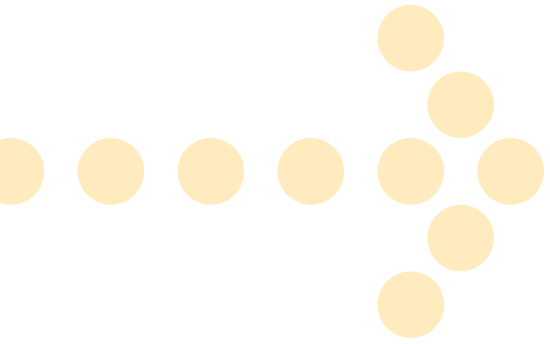
<b>1. Master Plan.....</b>	<b>6</b>
Vision, Purpose and Intention	
EWC Past	
EWC Future	
EWC Service Area	
<b>2. Goals and Guiding Principles .....</b>	<b>12</b>
Goals	
Guiding Principles	
Connected Integration	
Main Campus Existing Map	
<b>3. Process and Indexing.....</b>	<b>16</b>
Master Plan Process and Indexing	
Existing Inventory and Observations	
Current Physical Space Inventory	
Facilities Condition Index and Findings	
Facilities Condition Index Template	
<b>4. Executive Summary.....</b>	<b>22</b>
Past EWC 2013, 2015, 2018 Master Plan Recommendations	
Project Considerations	
<b>5. Centers of Excellence .....</b>	<b>26</b>
• Future of Eastern Wyoming College.....	27
• Event, Wellness, and Health Science Center.....	29
• Teaching, Learning, and Computer Science Center.....	28
• Entrepreneurship, Living, and Business Center.....	30
• Advanced Manufacturing Center.....	31
• Honor and Heritage Pavilion.....	32



- Agricultural and Veterinary Science Complex.....33
- Construction Trades Programs.....34
- Advanced Manufacturing.....35
- Entrepreneurial, Welcome and Residents Life Center.....36
- Health Science and Convention Center.....37
- 21st Century Educational Outreach Centers.....38
- 6. Torrington Campus.....40**
  - Main Campus Existing Map.....40
  - Main Campus Future Map.....41
  - Agriculture and Manufacturing Existing Map.....42
  - Agricultural and Veterinary Science Future Map.....43
  - Future Outdoor Space: Student Use.....44
  - Pathway Campus Map.....45
  - Anthropological Classroom, Lab, Office
- 7. Douglas Campus ..... 47**
  - Douglas Campus Existing Map.....48
  - Douglas Campus Future Map.....50
  - Douglas Campus Parking Map.....51
  - Douglas Campus Improvements
- 8. Summary: Building a Dream Campus.....57**
  - Event, Wellness and Health Science Center
  - Event Center
  - Sports Complex
  - Rodeo Complex
  - Public Input: Student Focus.....60
  - Safety and Security.....62
- 9. Costs.....63**
  - Costs Detailed
  - Centers of Excellence Cost Sheet
  - Safety and Security
  - Student Requested Amenities
  - Big Ideas: Program Specific Requests
  - Costs: Centers of Excellence
  - New Construction vs. Remodel/Rehabilitation
  - Phase Planning
- 10. Conclusion.....69**
  - Acknowledgments







# Master Plan Vision, Purpose, and Intention

## Vision

Every fall, Eastern Wyoming College (EWC) welcomes a new cohort of students pursuing transfer degrees, associate degrees of applied science or certificates. Our students come from different corners of the world. They have differing backgrounds, cultures, and personal histories. Some are already well on their way toward a college degree having taken credit courses through our high school dual and concurrent enrollment programs. Others may have spent years in the workforce and are stepping into a classroom for the first time in decades. Regardless of their background or reasons for making EWC a part of their journey, they are joining the Lancer family and allowing us to help guide them to a better future.

Just as the students are on a guided path complete with a plan, benchmarks, objectives, and a bold vision, we want the EWC campus to benefit from a purposeful structured plan and vision.

The role of community colleges is evolving quickly. The future holds exciting opportunities for our students. Strategic thinking now will ensure the EWC campus is ready for these opportunities.





## Purpose

This Master Plan and accompanying documents will guide EWC leadership in their work with the Wyoming Legislature and Wyoming Community College Commission on future capital funding requests. It will also guide college leadership in facility planning, expansion and improvement projects, and physical service area improvements. EWC will use this planning tool to fulfill its mission in prioritizing student success, providing opportunities for students to reach their goals, and enriching this unique region through work, partnerships, and student achievement.

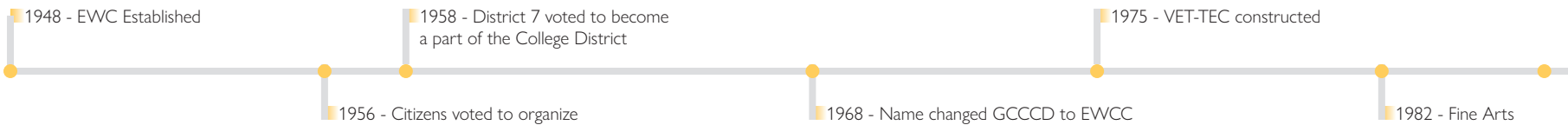
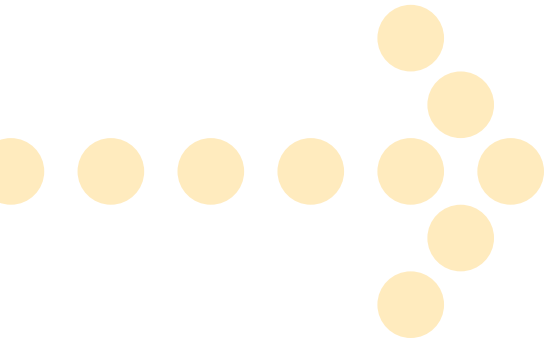
## Intention

The Master Plan will:

- Inspire EWC to create a vibrant and inclusive environment
- Index the facilities on both Torrington and Douglas campuses
- Help the college improve the design and layout of current facilities to best serve students and the community
- Address budgetary deferred maintenance and other persistent facility issues due to life cycles
- Capture comments, and record valued staff, students, stakeholders and community input







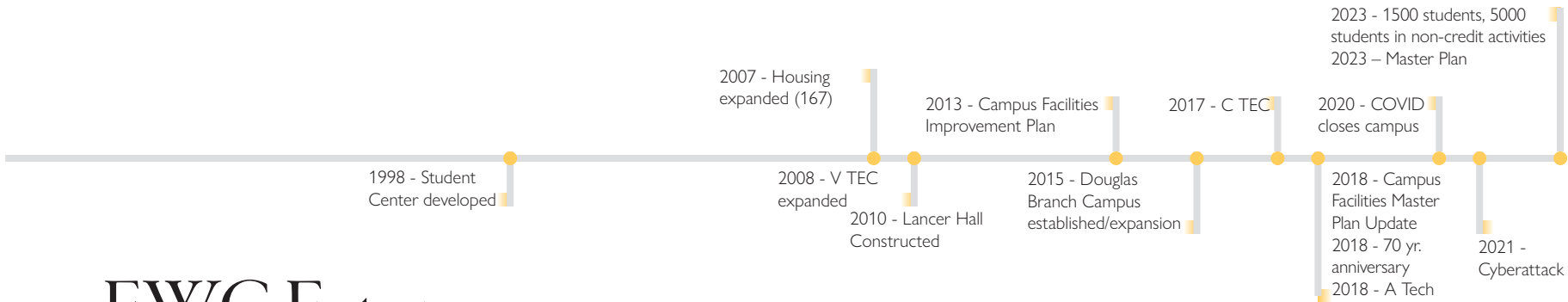
# EWC Past

Eastern Wyoming College (EWC) is the educational cornerstone for Goshen, Platte, Converse, Niobrara, Crook and Weston counties. Over the years, EWC has weathered many storms and challenges, emerging each time with renewed purpose and commitment.

The institution opened in September 1948 as the Southeast University Center, an extension of the University of Wyoming, operating within Torrington School District 3. Its early years were characterized by budgetary constraints, limited faculty and course offerings, and a modest student enrollment, with only 16 full-time students at one point. The turning point came in 1956 when the Torrington Public School District chose to establish the Goshen County Community College District, granting it board autonomy. This move allowed neighboring districts to join, resulting in all public school districts within the service area becoming part of the College District by 1965.

Due to this broader regional footprint, the institution was renamed Eastern Wyoming Community College District in 1968. Over the years, EWC has grown from 62 full-time students and 4 full-time instructors in 1956, to over 30 full-time instructors, nearly 500 full-time students and 1000 concurrent/dual enrollment students who pursue their academic goals. EWC expanded its academic reach to provide degrees and certificates for a wide array of transfer and career programming.





# EWC Future

Eastern Wyoming College continues to build on big ideas by expanding academic offerings. The most recent expansions include the addition of a second campus in Douglas Wyoming, adding nursing and gunsmithing to the curriculum in 2015. That is followed by the addition of the Career and Technical Education Center in 2017 that houses an expansion in cosmetology, nursing and welding. The most recent expansion occurred in 2020 with the addition of the Agriculture and Technical Education Center, adding technology to the farm and ranch curriculum.

In 2021, EWC experienced a severe cyber attack that resulted in the college initiating a comprehensive system rebuild. The College has spent the past two years reinvesting in the infrastructure to ensure that the college is prepared for the delivery of enhanced academic programs in the 21<sup>st</sup> Century.

This Master Plan will seek to further strengthen that resolve by providing a vision for investment into the future that can positively impact the lives of students who call EWC their home.





# EWC Service Area

Eastern Wyoming College (EWC) is a comprehensive public community college located in the North Platte Valley of eastern Wyoming. EWC's main campus is situated in Torrington, Wyoming, with a secondary campus in Douglas, Wyoming. EWC is part of a network of eight community colleges in the state of Wyoming, all under the coordination of the Wyoming Community College Commission.

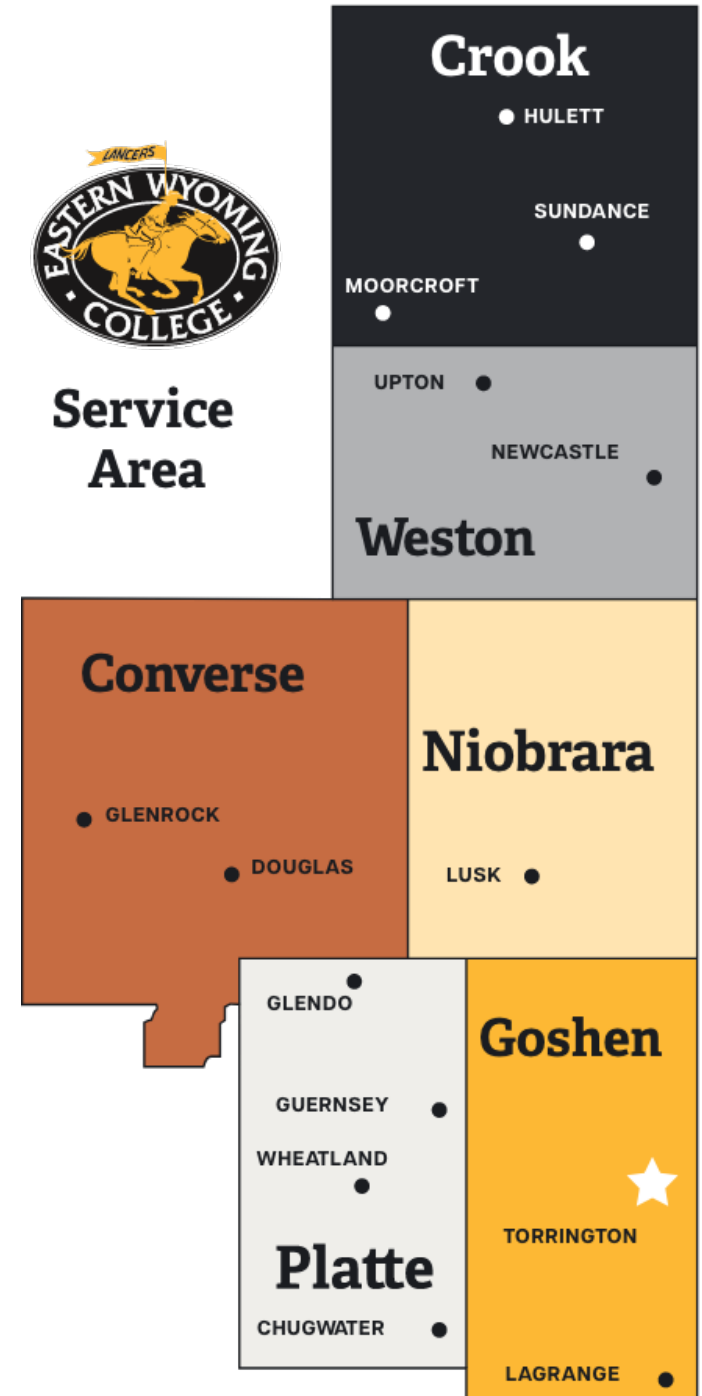
EWC extends its educational reach by sponsoring outreach programs in several neighboring counties, including Converse, Crook, Niobrara, Platte, and Weston. This commitment ensures the benefits of EWC's educational offerings are accessible to a broader community.

EWC plays a crucial role in serving a diverse student body, with 1,937 students enrolled in credit courses and an impressive count of over 5,912 students participating in non-credit activities.

With its rich history, EWC offers broad accessibility to both traditional and non-traditional students.



**Service Area**







# Goals and Guiding Principles

As discussions with Eastern Wyoming College's (EWC) leadership focuses on the college's future through four already established guiding principles. These principles, detailed below, revolve around words that resonate with EWC's vision: accessibility, sustainability, strategy, and community engagement. Bringing all stakeholders to the table and giving them a voice allows a central vision to develop, moving EWC into the future.

## Goals



1

### Goal 1

**Create** a campus and facilities assessment and index effectively aligning EWC with the strategic goals of the Wyoming Community College Commission.



3

### Goal 3

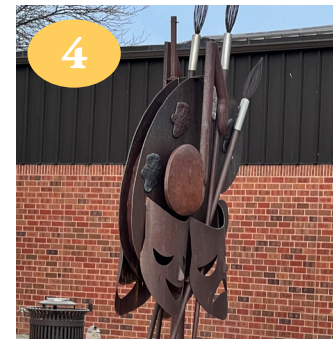
**Embrace** challenging conversations. In gathering data and assessing the campus, it is vitally important for EWC to look at what and why improvements are needed.



2

### Goal 2

**Engage** and involve the entire EWC community in the planning process. This includes students, staff, faculty, leadership, and community members.



4

### Goal 4

**Student** success, both inside and outside of the classroom is the guiding priority for campus direction, growth, and improvements.



**M**C2 developed the Facilities Master Plan based on leadership's clear focus on the goals and guiding principles outlined in the following pages. Every recommendation included in this plan is firmly rooted in this foundational framework, resulting in a structured and effective approach to enhancing and developing EWC's facilities, campuses, and programs in the future.

## Guiding Principles



### Guiding Principle 1

**Balance** stakeholder feedback with observational and technical assessments of facilities to produce recommendations and planning objectives that optimize institutional outcomes.



### Guiding Principle 3

**Engage** the greater community wherever possible. EWC is part of the communities and these communities are equally important parts of EWC.



### Guiding Principle 2

**Keep** accessibility and sustainability at the forefront of all recommendations for students, staff, stakeholders, and community.



### Guiding Principle 4

**Prioritize** the college's strategic funding areas:

- **IT expansion** with broadband security to support transfer, career and skilled trade program offerings. Expansion of community-based programs, continuing education, workforce development, and other community-related activities.



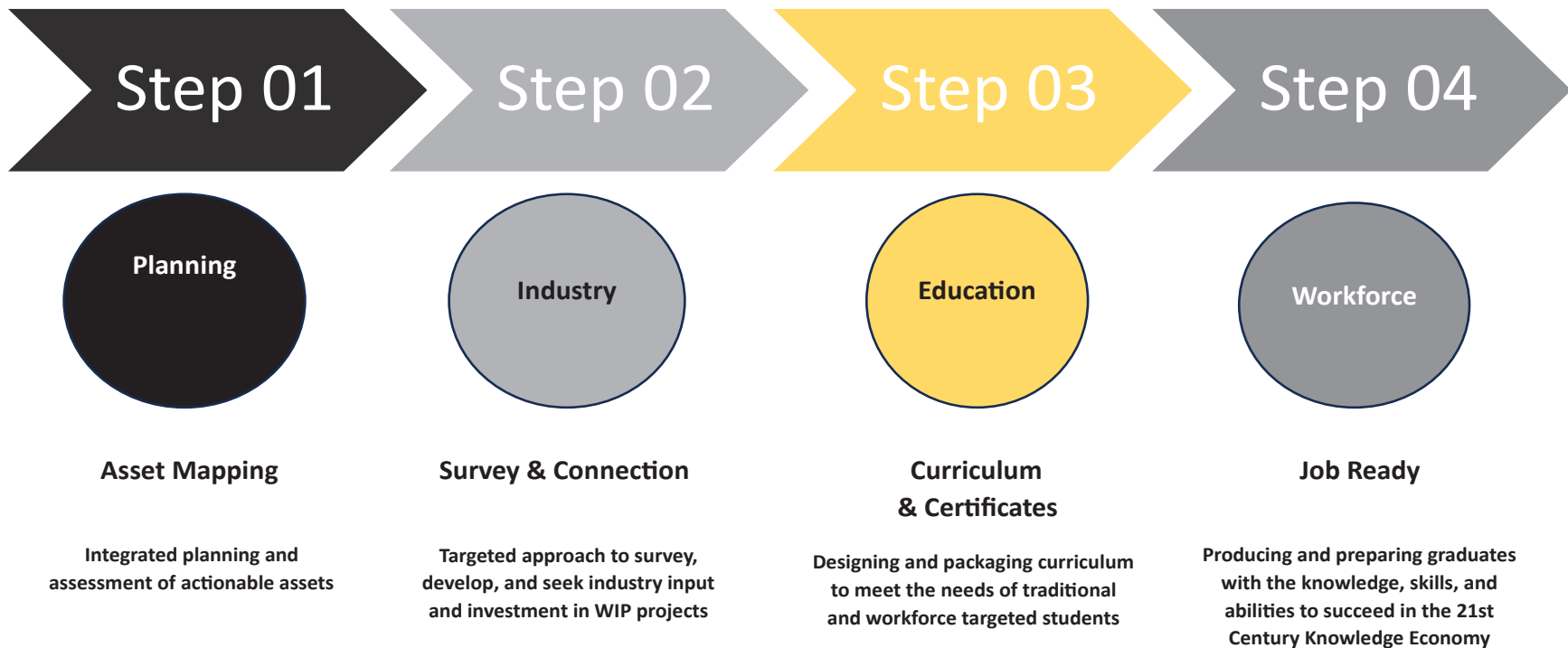




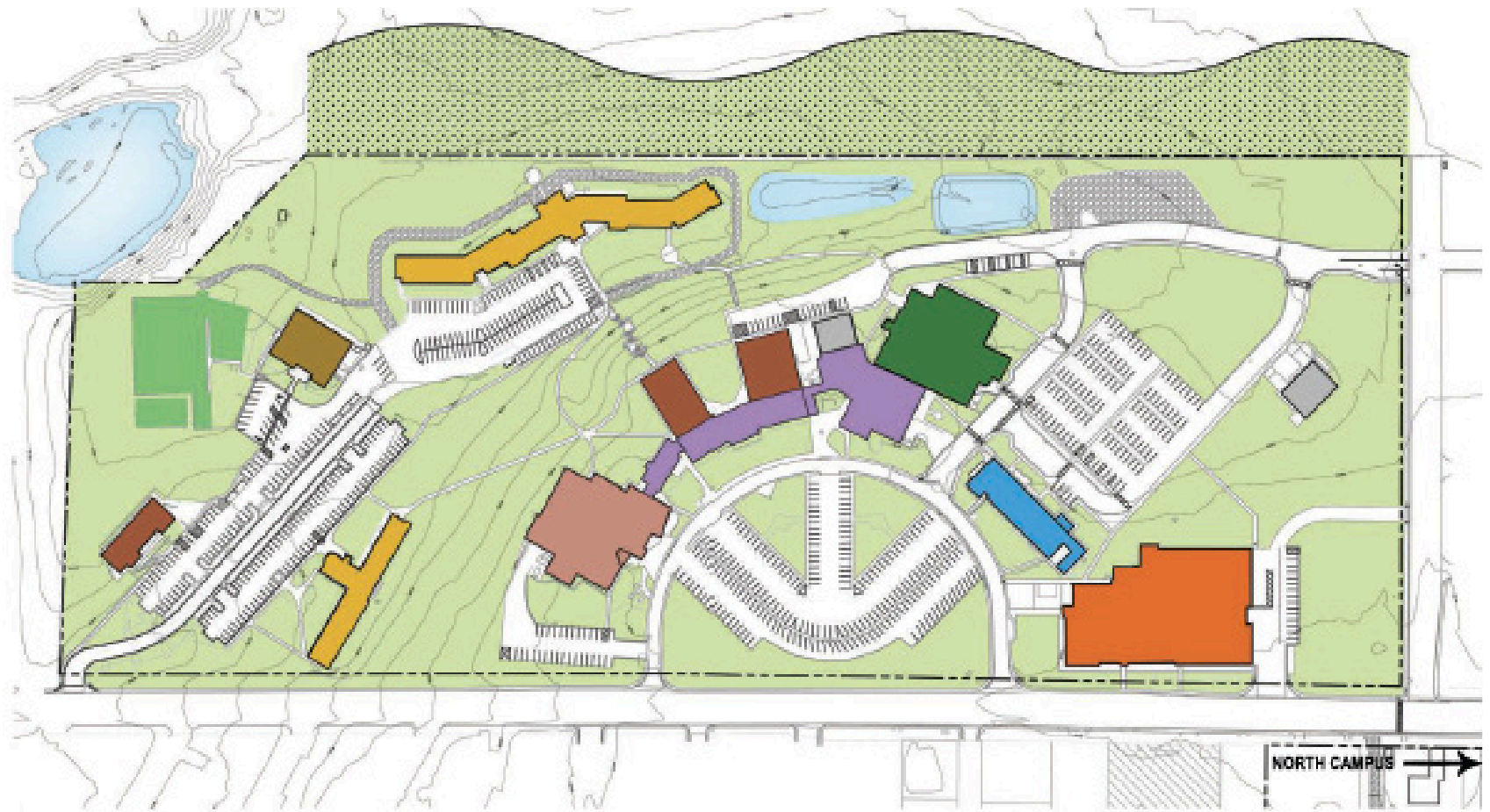
# Connected Integration

Eastern Wyoming College (EWC) embraces Connected Integration in all campus projects by thoroughly analyzing and planning assets. Understanding industry needs is key to developing relevant curriculum that ensure graduates are well-prepared for the workforce. This approach aligns education with practical industry demands while emphasizing EWC's commitment to producing workforce-ready graduates.

## Connected **Integration**




# Main Campus Existing Map



## Land Use Analysis

 Student Services	 Academic & Classrooms	 Fine Arts Center	 Vestibular Technology	 Student Housing	 Career Tech. Education Center
 Community Facilities	 Recreation Facilities	 Recreational Use	 Campus Maintenance	 Open Space	 Property Owned by Others, of Interest



NORTH CAMPUS   
 Main Campus zoned R-1  
 (Single Family Dwelling)





# Master Plan Process and Indexing



## MC2's Process:

In developing the recommendations for the Master Plan, MC2 adhered to a meticulous evaluation process designed to address the current and emerging needs and opportunities facing EWC. The initial phase involved community engagement and incorporated feedback from a diverse range of stakeholders including students, faculty, local school districts, and community members. A thorough evaluation of the existing facilities on both the Torrington and Douglas campus was also performed,

followed by an assessment of the evolving needs of the institution. Under the strategic guidance of the college's leadership, a set of recommendations was developed, presenting a detailed roadmap for the future. The following recommendations extend beyond mere infrastructure and are designed to ensure that EWC is equipped to confront forthcoming challenges and to meet its commitment to serving both students and the broader community.



## Facility Condition Index:

The Facility Condition Index (FCI), located in the Technical Guide, details the findings of MC2's evaluation of EWC's assets. The FCI highlights the current conditions across academic programs, grounds and outdoor spaces, administrative offices, physical infrastructure, and systems. Each domain was ranked with a priority, categorized by the FCI levels: good, fair, poor, and critical. After thorough

evaluation, MC2 prioritized the areas of most pressing need which are outlined in the recommendations. This process and documentation includes an Inspectors Report performed by Wyo Inspections, Nathan Petron.



## Recommendation Rationale:

The Master Plan outlines a clear strategy for EWC's future. Because several existing buildings have exceeded their functional lifetimes and do not meet current needs, this plan recommends several large, capital improvements. These improvements are required to facilitate other

key aspects of EWC's overall vision. The following recommendations are designed to modernize EWC's campuses and ensure that it is positioned for sustained growth in the coming years.







# Existing Inventory and Observations

“There is a belief in the country that we can cure unemployment by creating opportunity. The skills gap proves that opportunity alone is not enough to get people employed.”  
- Mike Rowe

The Master Plan addresses EWC’s challenges in facility maintenance, technology, and usability, while emphasizing the future. By taking proactive measures and drawing insights from past master plans and public input, this plan will help EWC strategically enhance overall operations, services, and educational quality. It also sets the stage for the development of “Centers of Excellence” that will ultimately benefit the institution, students, local communities, and the state of Wyoming as a whole.

Eastern Wyoming College (EWC) faces significant and shared needs that impact both of its campuses, particularly in the critical areas of facility maintenance and upgrades. The institution grapples with a range of challenges, including leaky roofs, electrical malfunctions, and outdated equipment which impede the usability of physical spaces and potentially jeopardize the safety of students and staff.

Within these overall needs, certain areas require immediate attention. For instance, programs like welding and cosmetology education require facility upgrades to ensure safe and effective learning spaces. Modernizing technological infrastructure is also crucial. Enhancing internet connectivity and software systems, and updating cybersecurity and digital protocols, are essential for the efficient functioning of administrative operations, security of digital assets, and effective educational delivery.

In addition, the development of an Agricultural and Veterinary Science Center is particularly important. Expanding multiple high-growth potential programs will provide EWC with the capacity to host a wide range of local and national events. In case of disaster, EWC is positioned to be a provider and shelter for the community.

MC2 used the facility assessments from the 2013 and 2018 Facilities Master Plans to inform the current plan. These facility assessments are still important and relevant. Many of the conditions identified in the 2018 plan have worsened over time. This is due to delayed action and restricted budgets. Immediate updates and changes remain for the Cosmetology and Vet-Tech facilities. In addition, Eastern Hall is becoming increasingly costly to maintain, and its design limitations make it unsuitable for modern student housing needs.

By addressing these common and pressing needs while incorporating insights from previous assessments, EWC can systematically improve overall operations and support services, and enhance educational quality. The proposed updates will foster a more conducive and effective learning environment, while laying the ground work for the development of Centers of Excellence, this will benefit every member of the institution and the communities these centers serve.



## Eastern Wyoming College

# Current Physical Space Inventory

<b>EWC – Torrington: Building Name</b>	<b>Date Built</b>	<b>GSF</b>
Tebbet Classroom	1968	74,281
Eastern Hall	1970	21,611
Veterinary Technology Vet-Tech	1975	11,780
Activities Center/Food Service/Athletics	1984	46,390
Former Cosmetology	1984	5,946
Faculty Offices	1985	5,018
Animal Holding Facility	2000	1,916
Large Animal Complex	2001	1,584
Bus Garage / Grounds Building	2006	4,500
Livestock Barn	2012	1,800
Hay Shed	2007	1,344
Fine Arts	1982/2014	28,647
Lancer Hall	2007/2015	28,713
Career and Technical Education Center (C TEC)	2017	68,886
Agriculture Technology and Education Center (A TEC)	2019	28,562
<b>TOTAL</b>		<b>223,716</b>
<b>EWC – Douglas: Building Name</b>	<b>Date Built</b>	<b>GSF</b>
Douglas Branch Campus	2015	28,137
<b>TOTAL</b>		<b>28,137</b>

*Source: 2013 Master Plan*

# Facilities Condition Index and Findings

## FCI Findings Suggest

### Facility Condition Index

Facility Condition Index (FCI) is an industry standard assessment tool which measures the condition of the constructed assets at a specific point in time. It references a functional indicator resulting from an analysis of different but related operational indicators. Originally developed by the US Navy, FCI has been adopted by universities and other public institutions to monitor building conditions and, it is used as a strategic decision-making investment tool.

MC2 Collaborative's assessment teams determined current deficiencies associated with each building, area of education and areas of topic or concern. Deficiencies were ranked according to five priority levels, with Priority 1 being the most critical to address.

- Pages 19-20 reflect the findings of the MC2 Collaborative FCI.
- Page 21 shows the template used for the assessment.
- It is important to reiterate that the FCI thresholds are not conclusive, but are intended to initiate conversations, planning and discussions in which other relevant issues regarding a facility's disposition must be incorporated.
- A table is enclosed to show the summary of the FCI findings.
- The MC2 Collaborative 20-page detailed report can be found in the EWC Master Plan Technical Document.

## FACILITIES INDEX

### Impact to Buildings and Component

GOOD	FAIR	POOR	CRITICAL
Nursing	Agriculture & Business Academics Athletics Business Office Cosmetology/ Barbering Math & Science Physical Plant Administration Student Services Welding/ Gunsmithing	Arts & Humanities Computer Services President's Cabinet Resident Life/Food	Veterinary Technology





# Facilities Condition Index and Findings Continued

## Maintenance Staff Impacts

GOOD	FAIR	POOR	CRITICAL
Athletics	Academics	Agriculture & Business	Computer Services
Business Office	Administration		Veterinary Technology
Nursing	Arts & Humanities	Cosmetology/Barbering	
Student Services	Math & Science	Physical Plant	
	President's Cabinet	Residence Life/Food	
		Welding/Gunsmithing	

## Educational Programming Impact

GOOD	FAIR	POOR	CRITICAL
Athletes	Academics	Agriculture & Business	Veterinary Technology
	Administration	Computer Services	
	Arts & Humanities	Cosmetology/Barbering	
	Business Office		
	Nursing	Math & Science	
	Physical Plant	Residence Life/Food	
	Welding/Gunsmithing	Student Services	

## Examples of Component Issues

GOOD	FAIR	POOR	CRITICAL
Athletics	Academics	Agriculture & Business	
	Administration	Business Office	
	Arts & Humanities	Computer Services	
	Nursing	Cosmetology/Barbering	
	Physical Plant	Math & Science	
		Residence Life/Food	
		Veterinarian Technology	

## User/Resident Complaints and Morale

GOOD	FAIR	POOR	CRITICAL
	Administration	Academics	Residence Life/Food
	Nursing	Agriculture & Business	Veterinary Technology
	Welding/Gunsmithing	Arts & Humanities	
		Athletics	
		Business Office	
		Computer Services	
		Cosmetology/Barbering	
		Math & Science	
		Physical Plant	
		President's Cabinet	
		Student Services	





# Facilities Condition Index Template

FCI Levels	Impact to Buildings and Component	Examples of Component Issues	User / Resident Complaints and Morale	Maintenance Staff Impacts	Educational Programming Impact
<b>CRITICAL</b>	Facilities will look worn with obvious deterioration. Equipment failure occurring frequently. Occasionally building shut down will likely occur. Management risk is high. Health and safety issues figure prominent.	Replacement of multiple systems required (i.e. Mechanical, Electrical, Architectural and Structural)  Building heating system failure.  Evacuation of upper floor due to unaddressed roof leakage.  Structural issues including envelope replacement.	User/Resident complaints will be very high with an unmanageable level of frequency.  Lack of maintenance will affect user/resident attitudes and morale.	Staff will not be able to provide regular scheduled maintenance due to the high level of "reactive" calls.	Represents the most severe deficiencies in the educational facility or space. It may be unsafe, unsuitable for learning, or in a state of disrepair. These conditions can pose significant risks to the well-being and academic success of students and teachers, requiring immediate attention and intervention.
<b>SCORE</b>					
<b>POOR</b>	Facilities will look worn with apparent and increasing deterioration.  Frequent component and equipment failure may occur.  Occasional building shut down could occur.	Replacement of specific major systems required, such as heating and plumbing systems, complete interior renovations, building envelope restoration.  Shut down may affect some units (i.e., roof or pipe leakage)	User/resident complaints will be high with an increased level of frequency.  Concern about negative user/resident morale will be raised and become evident.	Facilities staff time will likely be diverted from regularly scheduled maintenance and forced to "reactive" mode.	Significant deficiencies in the educational facility or space. It may be outdated, poorly maintained, or lack essential resources and technology. These conditions can have a negative impact on teaching and learning, hindering student engagement and achievement.
<b>SCORE</b>					
<b>FAIR</b>	Facilities are beginning to show signs of wear.  More frequent component and equipment failure will occur.	Repairs and replacement of specific systems, i.e., boiler, window replacements, interior renovations.	User/resident complaints will occur with a higher level of frequency.  User/resident morale may be affected	Facilities staff time may at times be diverted from regular scheduled maintenance.	Educational facilities or space has some areas for improvement. While it may meet basic requirements, there may be limitations in terms of space, resources, or accessibility that can affect the overall learning experience.
<b>SCORE</b>					
<b>GOOD</b>	Facilities will look clean and functional.  Limited and manageable component and equipment failure may occur	Repairs and replacement of more of an aesthetic or general nature, such as wall painting, carpet replacement, roof repair, window caulking.	User/resident complaints will be low and manageable.  User/resident morale will be positive and evidence.	Facilities staff time will be devoted to regularly scheduled maintenance.	Educational facilities or space is well-designed, functional, and supports effective teaching and learning. It provides a comfortable and conducive environment for students and teachers, with appropriate resources and technology to enhance the learning experience.
<b>SCORE</b>					
<b>PRIORITY</b>	<b>Priority 1 – Mission Critical Concerns:</b> Deficiencies or conditions that may directly affect the school's ability to remain open or deliver the educational curriculum. These deficiencies typically relate to the building safety, code, compliance, severely damaged or failing building components, and other items that require near-term correction. An example of a Priority 1 deficiency is a fire alarm system replacement.	<b>Priority 2 – Indirect Impact to Educational Mission:</b> Items that may progress to a Priority 1 item if not addressed in the near term. Examples of Priority 2 deficiencies include inadequate roofing that could cause deterioration of integral building systems, and conditions affecting building envelopes, such as roof and window replacements.	<b>Priority 3 – Short-Term Conditions:</b> Deficiencies that are necessary to the school's mission but may not require immediate attention. These items should be considered necessary improvements required to maximize facility efficiency and usefulness. Examples of Priority 3 items include site improvements and plumbing deficiencies.	<b>Priority 4 - Long-Term Requirements:</b> Items or systems that may be considered improvements to the instructional environment. The improvements may be aesthetic or provide greater functionality. Examples include cabinets, finishes, paving, removal of abandoned equipment, and educational accommodations associated with special programs.	<b>Priority 5 – Enhancements:</b> Deficiencies aesthetic in nature or considered enhancements. Typical deficiencies in this priority includes repainting, replacing carpet, improved signage, or other improvements to the facility environment.







# Executive Summary

The Eastern Wyoming College (EWC) Master Plan is anchored in major initiatives, including addressing infrastructure, accommodating growth in various educational areas, ensuring accessibility for all, promoting sustainability, addressing student and operational constraints, and improving campus navigation, parking, and transportation infrastructure. These initiatives aim to create a dynamic, inclusive, and adaptable campus that meets the evolving needs of students and the community. Additionally, the plan reflects the college's proactive commitment to ensure its facilities meet contemporary standards and foster a resilient and adaptable campus that can thrive amidst evolving needs and expectations.

The importance of the Centers of Excellence for student success is a crucial aspect of the plan. The Centers of Excellence play a vital role in providing specialized, high-quality education and training in specific fields, ultimately contributing to the overall success of the students and the institution.

The integration of Centers of Excellence into the master plan involves strategic planning to ensure that the physical environment supports the specialized needs of these centers.

Integrating Centers of Excellence into the EWC master plan may include the following considerations:

- **Space Allocation:** Allocate appropriate space for each Center of Excellence, considering the specific requirements for teaching, research, and specialized facilities.
- **Technological Infrastructure:** Ensure the technological infrastructure supports the unique requirements of each Center of Excellence, such as advanced laboratories, specialized equipment, and IT infrastructure.
- **Collaborative Spaces:** Design shared spaces to encourage collaboration and interdisciplinary work among different Centers of Excellence, fostering a dynamic and innovative environment.
- **Sustainability and Flexibility:** Incorporate sustainable design principles and flexibility into the facilities to accommodate future changes and advancements in the various fields of excellence.
- **Accessibility and Visibility:** Ensure the Centers of Excellence are easily accessible and highly visible within the campus, thereby promoting engagement and interaction with students, faculty, and the community.

By incorporating these considerations into the master plan, the college can create an environment that fully supports the mission and success of its Centers of Excellence.



# Past EWC 2013, 2015, 2018 Master Plan Recommendations Still in Review

All the recommendations in this Master Plan are informed by prior recommendations and will address the project considerations outlined on the next two pages to ensure accessibility, functionality, and utility.

1. Improve Main Access
2. Vet-Tech Expansion
3. New Plaza Connection
4. New Activities Center Entry
5. Former Cosmetology Renovations
6. Traffic Flow & Parking
7. Eastern Hall Renovations/Demolition
8. Library Renovation
9. Cafeteria Renovation
10. Main Tebbet Entry
11. Fine Arts Auditorium Renovation
12. New Land Acquisition
13. Greenhouse Horticultural Center
14. Hay Shed Relocation







# Project Considerations



## Aging and Obsolete Facilities

- Vet-Tech
- Tebbet
  - Administration
  - Cafeteria
  - Classrooms
  - Meeting Spaces
- Eastern Hall
- Fine Arts Auditorium

## Infrastructure Upgrade

- Fine Arts Auditorium
- IT Infrastructure
- Tech Classrooms
- Faculty Offices (Tebbet and Douglas Campus)

## Deferred Maintenance

- Tebbet
- Gym



## Address Infrastructure

Founded in 1948, EWC is Wyoming's longest established community college. Many of its original buildings from the campus in 1968 are still in use. While Tebbet remains a stunning and viable building, it and several other of the Torrington campus's original capital assets are in need of major renovations and upgrades. By addressing these infrastructure deficiencies, EWC can ensure it continues to thrive for another 75 years.



## Career Technology Program Space

- Douglas Campus Expansion
- Nursing Simulation Lab Expansion
- New Veterinary Technology Building
- New Program Classrooms, Labs, and Faculty Space
- New Hoop Houses & Precision Agricultural Program Lab Space

## Residence Halls and Student Union

- New Residence Hall
- Phase-Out of Eastern Hall
- New Student Union
- New Campus-wide Outdoor Study and Meeting Spaces

## Student-Centered Recreation & Athletics

- Agricultural and Veterinary Sciences Center
- Outdoor Amphitheater
- Student Outdoor Recreation Space



## Infrastructure Expansion and New Buildings

EWC has bold vision for its future and role in higher education in the state of Wyoming. To fulfill this vision, its campuses will need to adapt and grow in the areas of technology and trades education, agricultural education, student life, and community engagement. These strategic projects are meant to bolster EWC's role as a leader in agricultural and career education.







### Facility Access Upgrades

- Ongoing ADA Compliance Initiatives
- Campus Accessibility and Usability Committee
- Annual Assessments
- Ongoing Community Engagement



### ADA Compliance

The accessibility and usability of EWC's facilities does not meet the standard needed to fulfill its mission to successfully bring opportunities and learning experiences to everyone. Those with physical disabilities currently face significant challenges while navigating the EWC campus. This initiative is meant to address these challenges head-on to ensure the college keeps accessibility at the top of facility priorities.



### Campus Energy and Resource Committee

- Annual Energy Assessment
- Solar Power Additions
- Climate Resistant Landscaping
- Ongoing Sustainability Initiatives



### Sustainability

Acting responsibly, understanding limited resources, and demonstrating economic restraint are not new concepts for those in eastern Wyoming. In fact, this region was built upon the values of caring for and maintaining the land, its resources, and adopting frugal measures to manage risk. EWC's sustainability measures are made with these values in mind so students and our community can benefit for years to come.



### Asset Tracking and Security Infrastructure

- Academic Programs
- Grounds and Maintenance
- Residence Halls
- Athletics
- Administration
- Fleet Vehicles



### Storage

In the pre-planning work, EWC stakeholders consistently emphasized the need for adequate storage. Students, faculty, administrators, and physical plant staff discussed the storage restraints that negatively impact their work and their progress toward goals. Addressing storage needs sufficiently will make employees more efficient and will give EWC greater control over its business assets, resulting in economic benefits through increased longevity and decreased losses.



### Torrington and Douglas Parking Capacity

- Signage and Wayfinding
- Pedestrian Paths
- Fleet Vehicles and Equipment
- CDL Program
- Electric Vehicle Charging Stations



### Transportation, Parking and Signage

Over time and since the pandemic, the way students, staff, and community members access EWC has changed dramatically. This has impacted parking, vehicle, and foot traffic on campus in both expected and unexpected ways. Parking lots, foot paths, and roads will need to evolve to maintain safety, usability, and easy access.



# Centers of Excellence

Eastern Wyoming College (EWC) is embarking on a transformative journey with the development of Centers of Excellence, a strategic initiative designed to synergize college departments, align education with evolving workforce needs, and achieve systemic results. This approach aims to foster collaboration, enhance educational offerings, and boost student employability by integrating academic departments and initiatives into cohesive units. These Centers will focus on key areas such as technology, healthcare, agriculture, residential living, trades, and advanced manufacturing; while forming strategic alliances with industry leaders to ensure curriculum relevance and provide real-world learning opportunities. The initiative is poised to bring systemic educational improvement, directly addressing workforce development and bolstering the regional economy.



## Centers of Excellence Concept

By creating state-of-the-art research and innovation hubs, and strengthening community engagement, the Centers will not only elevate EWC's institutional prestige but also play a pivotal role in regional economic growth. These visionary steps position EWC as a leader in providing dynamic and relevant education, poised to both students' career trajectories and the broader economic landscape.





# FUTURE OF EASTERN WYOMING COLLEGE CENTERS OF EXCELLENCE



## **TORRINGTON MAIN CAMPUS**

- Teaching, Learning, and Computer Science Center (page 28)
- Event, Wellness, and Health Sciences Center (page 29)
- Entrepreneurship, Living and Business Center (page 30)
- Advanced Manufacturing Center (AMC) (page 31)
- Honor and Heritage Pavilion (page 32)

## **TORRINGTON NORTH CAMPUS**

- Agricultural and Veterinary Science Complex (page 33)

## **DOUGLAS CAMPUS**

- Construction Trades (page 34)
- 21st Century Educational Outreach Centers (page 35)
- Advanced Manufacturing Center (page 36)
- Entrepreneurial, Welcome, and Residence Life Center (page 37)
- Event, Wellness, and Health Sciences Center (page 38)



## RECOMMEND: TORRINGTON

# TEACHING, LEARNING, AND COMPUTER SCIENCE CENTER



## Teaching, Learning, and Computer Science Center

\$12M - 18M

The Next-Gen facility stands as a beacon of modern education, embodying the essence of 21st-century learning. At its core are the state-of-the-art teaching classrooms, designed to infuse advanced technology seamlessly into the college curriculum, offering both professors and students an unparalleled educational experience. These technology-rich environments extend to newly developed biology, anatomy, and physiology labs, as well as comprehensive chemistry and physics facilities.

Additionally, the center is home to Eastern Wyoming College (EWC) School of Computer Science, a hub for nurturing expertise in computer programming, mathematics, and technical training. This focus ensures that graduates are not only industry-ready but also well-prepared for university-level education. Integral to the center is the redesigned front-entrance to the College boasting a one-stop for student services and a welcome center for visitors. Included within this redesign is a transfer center that will provide personalized academic and career advising. This holistic approach ensures that every student is equipped with the guidance and resources needed to achieve their academic and career aspirations, embodying the spirit and purpose of a Next-Gen education.

### Key Center Activities

- 21st Century Classrooms
- 21st Century Biology and Physical Science Laboratory Classrooms
- School of Computing
- One-stop Student Services Center
- Academic and Transfer Center
- New Main Entrance

## RECOMMEND: TORRINGTON

# EVENT, WELLNESS AND HEALTH SCIENCE CENTER



## Event, Wellness, and Health Science Center

\$25M -30M

Inspired by successful public-private partnerships, the center is set to become a central hub for rural community advancement, focusing on fostering, growth, education, tourism, and recreation. By aligning diverse service providers and governmental entities the center creates a holistic infrastructure aimed at addressing a wide array of rural community needs. This multi-functional center will combine the diverse needs of industry partners, educational institutions, corporations, and converge them into a single service-rich destination offering health and sports facilities, community education, recreational activities, STEM education, and events management.

### Key Center Activities

- 21st Century Health Science Classroom and Laboratories
- 21st Century Teaching Center
- Convention Center
- Rodeo and Equine Facility
- Sports Complex



## RECOMMEND: TORRINGTON

# ENTREPRENEURSHIP, LIVING AND BUSINESS CENTER



### Entrepreneurship, Living and Business Center

\$10M - 15M

The Entrepreneurship, Living and Business Center presents a pioneering vision for Eastern Wyoming College, blending a multifaceted approach to education, business, and residential living. At its core, the Center integrates student-run cafes and food services, creating a vibrant, hands-on learning environment for budding entrepreneurs and culinary arts programs. This practical approach to education is further enhanced by a dedicated student center, fostering a collaborative and innovative atmosphere. Uniquely, the Center offers business spaces specifically designed for incubation and acceleration, supporting student and local startups from concept to realization. This approach not only nurtures entrepreneurial skills but also contributes to the local economy. Complementing these features is a blended model of residence halls, which not only provides accommodation but also immerses students in a living learning community, promoting a balance of academic and practical experiences, offering an unparalleled platform for experiential learning and community engagement. The Center is poised to redefine the regional living and development paradigm while embodying the true spirit of innovation embedded in the West.

#### Key Center Activities

- Culinary Arts & Food Services
- Student Center & Café
- Business Incubation and Acceleration
- Residence Halls / Hotel Accommodations
- Industry Leading Classrooms & Meeting Spaces

## RECOMMEND: TORRINGTON

# ADVANCED MANUFACTURING CENTER



## Advanced Manufacturing Center

\$15M - 25M

The Advanced Manufacturing Center (AMC) by Eastern Wyoming College (EWC) represents a cutting-edge initiative designed to align education with the evolving demands of modern industry. At the heart of the AMC is a suite of advanced technologies and educational programs aimed at preparing students for critical roles in engineering, petroleum, mining, energy, renewable technology and the applied technology sector. The center will offer specialized training in engineering, automation, and precision instrumentation which undergirds the skills within the advanced manufacturing and plant operation cluster. An applied technology hub will be at the core of the center and offer laboratory space for precision technology for gunsmithing, specialty machining and welding, rare earth, and traditional mining. The technology hub will focus on the Next Gen CNC machining, fabrication, technical skills, science, and programming that drive industry and innovation. By offering these diverse yet interconnected programs, the AMC not only responds to current workforce needs but also positions its graduates at the forefront of industry trends; ensuring they are well-prepared to meet future market demands in these evolving and critical fields.

### Key Center Activities

- 21st Century Manufacturing Laboratories
- 21st Century Technology Classrooms
- Advanced Automated Welding & Machining Laboratories
- Manufacturing & Makerspace Exploration Classrooms
- Applied Technology Hub (precision & instrumentation)
- Plant Operations for Mining and Refining Technologies

## RECOMMEND: TORRINGTON

# HONOR AND HERITAGE PAVILION



## Honor and Heritage Pavilion

\$3M - 5M

The Honor and Heritage Pavilion at Eastern Wyoming College (EWC) is set to be a landmark of cultural and educational significance, seamlessly blending history, leadership, and community engagement. This multifaceted center will feature a museum dedicated to showcasing the rich tapestry of historic and prehistoric discoveries in the region, including the notable Sunrise Mine, artifacts from the Oregon and Mormon trails, and a plethora of archaeological finds across EWC's service area. More than just a display of history, the museum will serve as a vibrant learning and preservation center, offering a specialized degree in museology. Alongside the museum, the Pavilion will proudly house the American Center for Rural Leadership and Economic Development, a pioneering institute committed to advancing innovative strategies and business practices vital for rural America's growth. This center aims to be an international beacon for fostering the Western ethic. An integral part of that ethic is a Veteran's center that will commemorate the service and sacrifice of our military personnel while providing essential services to assist Veterans with advancing their educational training and degrees. The Pavilion is also home to a magnificent outdoor amphitheater, a dynamic venue for performances, lectures, concerts, and events, bridging the gap between the community and students with an array of cultural, educational, and entertainment opportunities. Complementing this indoor-outdoor space is a unique walking pathway, conceptualized as a living museum, where music, fitness, and education intertwine, offering an immersive experience that encapsulates the spirit of the Honor and Heritage Pavilion at Eastern Wyoming College.

### Key Pavilion Activities

- Museum of the West (historic and prehistoric artifacts)
- American Center for Rural Leadership and Economic Development
- Events and Community Meeting Space
- Veterans Center
- Amphitheater and Performing Arts



## RECOMMEND: TORRINGTON NORTH CAMPUS

# AGRICULTURAL AND VETERINARY SCIENCE COMPLEX



### Agricultural and Veterinary Science Complex

\$20M - 30M

The Agricultural and Veterinary Science Complex at Eastern Wyoming College's (EWC) North Campus is set to become a cornerstone of contemporary agricultural education and practice. Embodying the fusion of 21st Century educational ideals with the timeless traditions of farming and animal care, this state-of-the-art facility and out space design spans the entirety of the North campus and creates a hub of innovation and excellence. At the core of the Complex will be a new veterinary sciences facility. This science facility will be the first of its kind, boasting 21st Century laboratories and an integrated model that promotes seamless transfer into industry and onto further veterinary education. The design will anchor the entire complex with a forward-leaning focus on education and industry. The design will provide a dynamic setting for EWC's nationally competitive teams in livestock judging and showmanship, spotlighting the college's commitment to excellence in agricultural disciplines. Beyond competition, the Agriculture and Sciences complex will serve as a vibrant center for industry events, educational programs, and hands-on training, with a particular focus on livestock, agronomy science, and veterinary sciences. This forward-thinking complex is poised to play a pivotal role in shaping the future of farm and ranch management, offering students, professionals, and the community a unique opportunity to engage with and lead in the evolving world of agricultural sciences.

#### Key Center Activities

- Veterinary Science Center
- 21st Century Agricultural Laboratories
- 21st Century Classrooms
- Livestock Barns and Arenas
- Agronomy Science Plots and Animal Science Pens and Laboratories

## RECOMMEND: DOUGLAS CAMPUS

# CONSTRUCTION TRADES PROGRAM



### Construction Trades Program, Douglas

\$5M

The Construction Trades Program at Eastern Wyoming College's Douglas Campus represents a forward-thinking initiative designed to bridge the gap between education, industry, and real-world application. This program uniquely integrates with ongoing construction projects, providing students with an unparalleled opportunity to gain hands-on experience while learning. Such integration ensures that the skills taught are not only current but also directly applicable to the evolving needs of the construction industry.

#### **Connection with Industry**

Central to this program is its strong connection with industry partners. These collaborations will allow students to engage with professionals, understand industry standards, and stay abreast of the latest techniques and technologies in construction. This industry linkage also opens pathways for future employment opportunities, internships, and apprenticeships, making our graduates highly sought-after in the workforce.

#### **Connection with High School**

Another key aspect of the Construction Trades Program is its connection with secondary education. By partnering with local high schools, the program offers early exposure to construction trades, encouraging young students to consider careers in this vital sector. This approach not only broadens the talent pipeline but also supports community development by equipping local youth with valuable skills.

The EWC Douglas Campus Construction Trades Program is a comprehensive educational model tailored to meet the demands of the construction industry, foster community growth, and prepare students for successful careers in construction trades. This program is not just about building structures; it's about building futures.

#### **Key Program Activities**

- Apprenticeship Programs
- Construction Management
- Connected Career Pathways

## RECOMMEND: DOUGLAS CAMPUS

# ADVANCED MANUFACTURING CENTER



## Advanced Manufacturing Center

\$25M - 30M

The Advanced Manufacturing Center (AMC) at the Douglas campus is a visionary project, tailored to meet the specific needs and interests of the region, with an emphasis on gunsmithing and shooting sports. This center is an embodiment of innovation, strategically aligning its curriculum with the dynamic requirements of contemporary industry. Central to the AMC are advanced educational programs and technologies that prime students for pivotal roles in sectors like engineering, petroleum, mining, energy, and renewable technology. Notably, the center will specialize in engineering, automation, and precision instrumentation, which are foundational to advanced manufacturing and plant operations. At the core of the AMC is an applied technology hub, dedicated to providing state-of-the-art laboratory spaces. The focus here is not just on technical skills but also on the science and programming that fuel industry advancements and innovation. By integrating these specialized programs, the AMC at Douglas campus is uniquely positioned to address the immediate needs of the workforce while preparing its graduates to be pioneers in the ever-evolving advanced manufacturing sector.

### Key Center Activities

- 21st Century Manufacturing Laboratories
- 21st Century Technology Classrooms
- Advanced Automated Welding & Machining Laboratories
- Manufacturing & Makerspace Exploration Classrooms
- Applied Technology Hub (precision & instrumentation)
- Plant Operations for Mining and Refining Technologies



## RECOMMEND: DOUGLAS CAMPUS

# ENTREPRENEURIAL, WELCOME, AND RESIDENCE LIFE CENTER



### Entrepreneurial, Welcome, and Residence Life Center

\$15M - 20M

The Entrepreneurial, Welcome, and Residence Life Center at Eastern Wyoming College's (EWC) Douglas Campus is poised to become a vibrant nexus of student life, innovation, and community engagement. This multifaceted complex is designed to embody the entrepreneurial spirit, offering students hands-on employment opportunities in business startups, culinary arts, and event management within the student center itself. The student center, envisioned as the cultural heart of the college, will enhance the student experience by providing a range of support services crucial for their higher education journey. This integration of student life with entrepreneurial ventures is further enriched by the innovative residence center. Here, the concept of living is reimaged, intertwining comfortable living spaces with educational areas and entrepreneurial opportunities. This unique blend of facilities in the center not only fosters a dynamic learning environment but also encourages students to explore and develop their educational and technical skills, all while being supported in a nurturing community setting. The Entrepreneurial, Welcome, and Residence Life Center stands as a testament to EWC's commitment to cultivating an environment where education, entrepreneurship, and personal growth can flourish in harmony.

#### Key Center Activities

- Entrepreneurial and Business Startup Labs
- Culinary Arts and Events Management
- Student Center One-Stop
- Residence Life Center

## RECOMMEND: DOUGLAS CAMPUS

# HEALTH SCIENCE AND CONVENTION CENTER



## Health Science and Convention Center

\$8M - 12M

The Health Science and Convention Center is a state-of-the-art facility dedicated to advancing medical education and community engagement. This Center of Excellence will serve as the cornerstone for medical sciences at the campus, featuring robust industry partnerships that not only enrich the learning experience but also offer vital upskilling opportunities for current healthcare workers.

The Center will significantly expand EWC's capacity to offer in-demand medical education programs. This expansion includes, but is not limited to, expanded Certified Nursing Assistant (CNA) training, Medical Assistant, Phlebotomy, Physical Therapy Assistant, and a Radiologic Technologist program. Such a diverse array of offerings ensures that EWC can effectively meet the evolving needs of the healthcare sector and prepare students for successful careers in these critical fields.

Additionally, the Health Science and Convention Center will include a convention center, transforming into a hub for community and professional events. This space will not only host workshops and conventions but also serve as a vital connection between the college and the larger community. The convention center is designed to provide much-needed meeting and event space for the community and the College.

### Key Center Activities

- Nursing Program Expansion
- CNA Expansion
- Medical Assistant Program
- Physical Therapy Assistant
- Radiologic Technologist Program
- Convention and Event Management

## RECOMMEND: EWC SERVICE AREAS

# 21ST CENTURY EDUCATIONAL OUTREACH CENTERS



### 21st Century Educational Outreach Centers

\$18M - 22M

Eastern Wyoming College (EWC) is embarking on an ambitious journey to extend and modernize its educational footprint through the creation of the 21st Century Outreach Education Centers. These centers, born from strategic partnerships with local school districts, county governments, and industry allies, are designed to be hubs of innovation and access. Each center will be equipped with state-of-the-art technology, including high-speed broadband, advanced classroom technologies, fitness equipment, and versatile makerspaces. The focus is not only on providing face-to-face instruction but also on embracing mixed and hybrid instructional formats, catering to diverse learning needs and preferences. These centers are envisioned as pivotal nodes in a network that aims to fulfill the educational aspirations of the State of Wyoming. This initiative represents a significant leap forward in EWC's commitment to delivering 21st Century education and opportunities to every county that EWC serves.

#### Key Center Activities

- 21st Century Classrooms
- 21st Century Laboratories
- Fitness Center Equipment and Classes
- Makerspace and Science Exploration
- Essential College Services (Academic & Student Services)



# Strategies to Tackle: Master Plan Top Priorities

By breaking the implementation of the master plan into phases, Eastern Wyoming College can ensure thorough analysis, inclusive input, and alignment with the institution's mission and strategic goals.

## PHASED ACTION PLAN

1. **IMMEDIATE:** Prioritizing essential needs and necessary maintenance, addressing critical issues that demand immediate attention.
2. **SHORT-TERM:** Focusing on minor construction projects that are manageable, shovel ready, or have identified prioritized funding.
3. **LONG-TERM:** Starting the remaining construction (major new construction) phase of major facilities and the establishing sustainable programs.



# Main Campus Existing Map



## Land Use Analysis

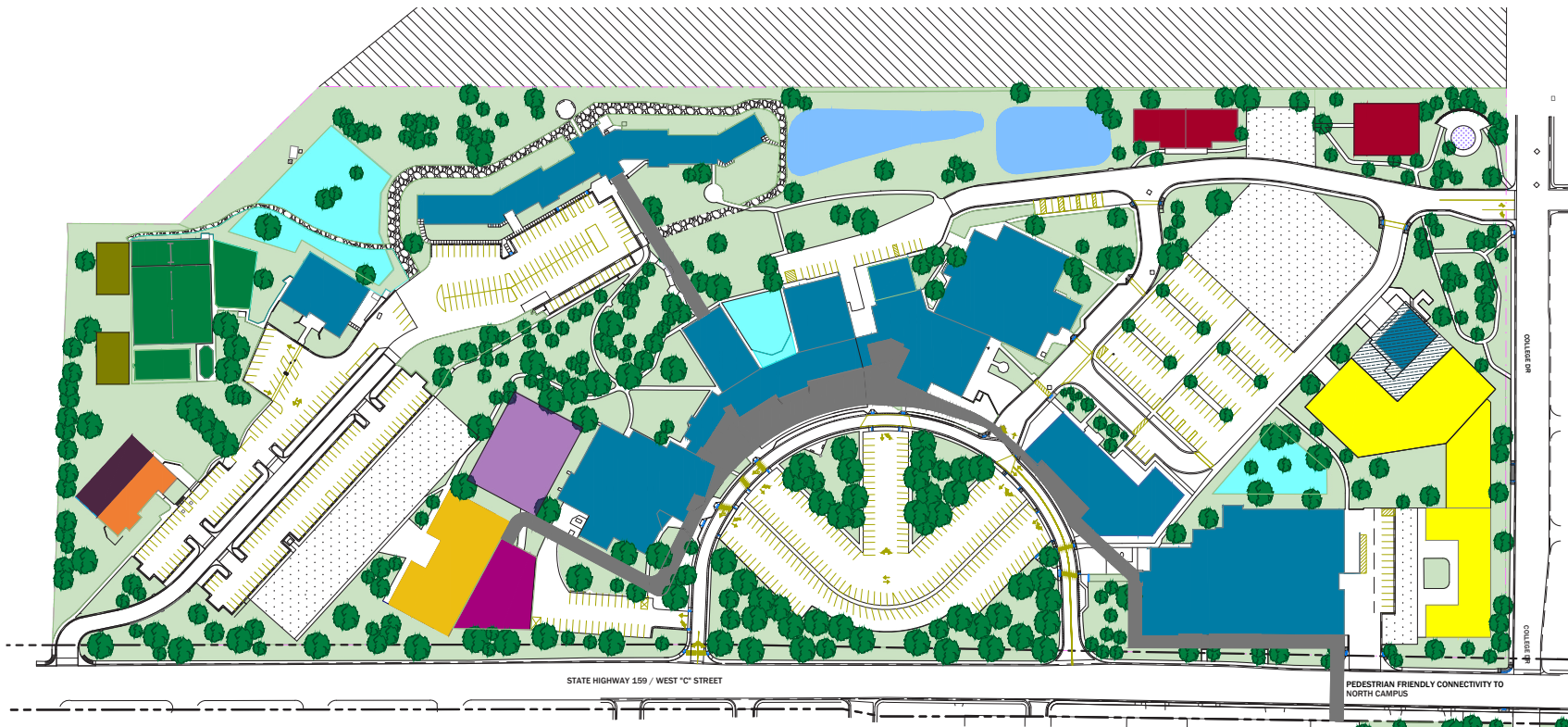
 Student Services	 Academic & Classrooms	 Fine Arts Center	 Vestibular Technology	 Student Housing	 Career Tech. Education Center
 Community Facilities	 Recreation Facilities	 Recreational Use	 Campus Maintenance	 Open Space	 Property Owned by Others, of Interest



Main Campus zoned R-1  
(Single Family Dwelling)



# Main Campus Future Map



## MAIN CAMPUS EWC FUTURE MAP



### LIVING AND LEARNING CENTERS

ENTREPRENEUR LIVING & BUSINESS CENTER

HONOR & HERITAGE PAVILION

STUDENT UNION

ADVANCED MANUFACTURING

POTENTIAL ADVANCED MANUFACTURING EXPANSION

OUTDOOR SPACE

OPEN SPACE

PICKLEBALL COURTS

EXISTING BUILDING

LEARNING CENTER/ ALTERNATIVE HIGH SCHOOL

BUILDING ADDITION

PARKING EXPANSION

EXPANDED SERVICES

NEXT GEN: TEACHING, LEARNING AND COMPUTER SCIENCE CENTER

POTENTIAL LAND PURCHASE

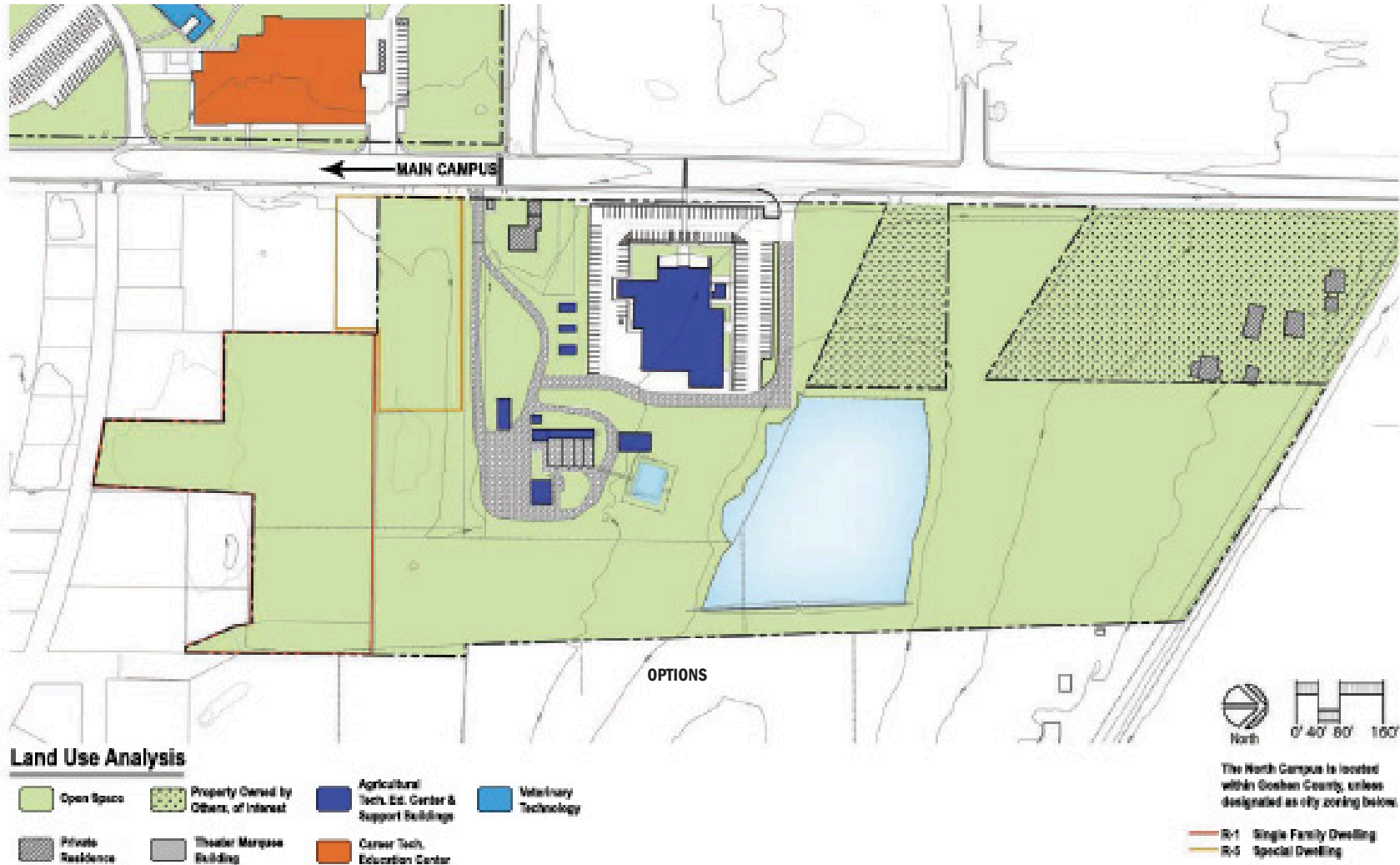
### CENTERS OF EXCELLENCE

1. NEXT GEN: TEACHING, LEARNING AND COMPUTER SCIENCES CENTER
2. EVENT, WELLNESS AND HEALTH SCIENCES CENTER
3. ENTREPRENEURSHIP, LIVING AND BUSINESS CENTER
4. HONOR AND HERITAGE PAVILION

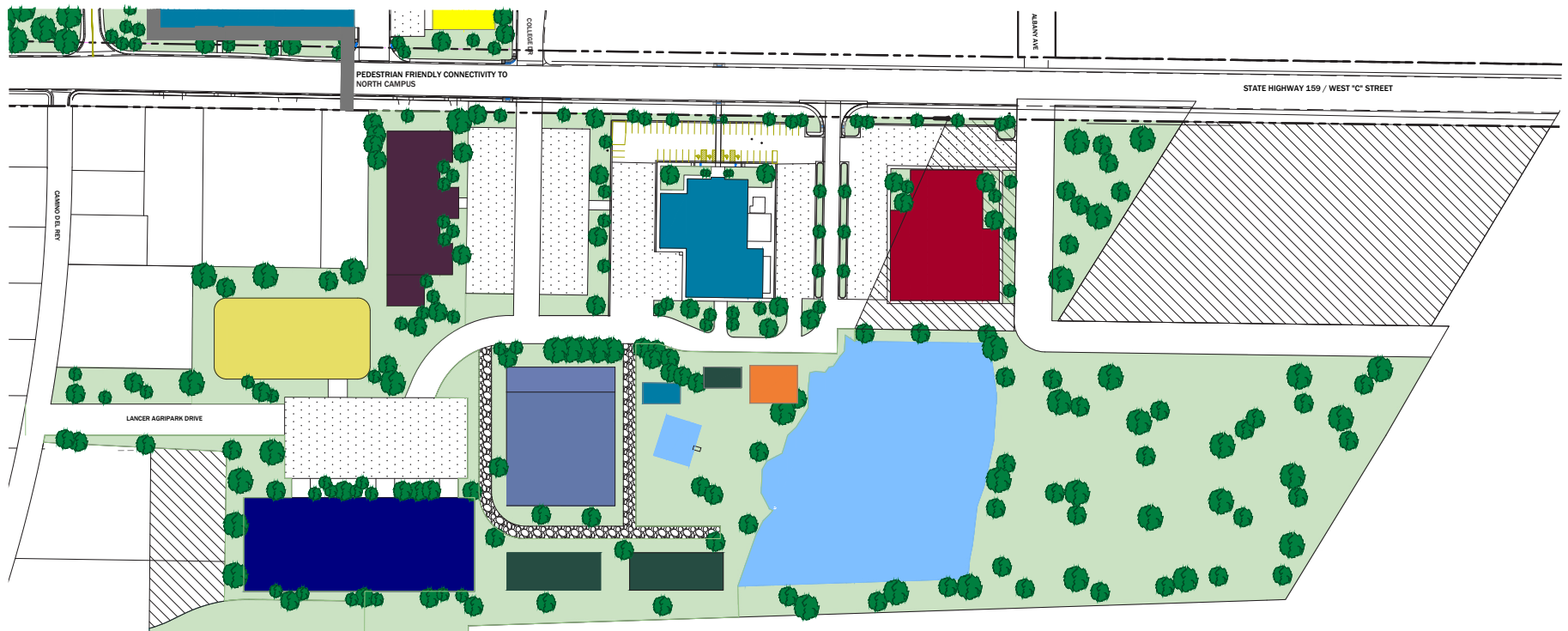




# Agriculture Existing Map and Manufacturing Programs



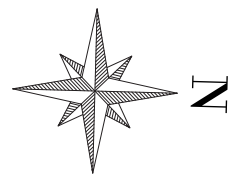
# Agricultural and Veterinary Science Center Future Map



- |                        |                              |                             |
|------------------------|------------------------------|-----------------------------|
| OPEN SPACE             | AGRICULTURAL SCIENCE COMPLEX | VETERINARY TECHNOLOGY       |
| ATEC SUPPORT BUILDINGS | LIVESTOCK HANDLING FACILITY  | STORAGE/SUPPORT FACILITIES  |
| LIVESTOCK FACILITY     | SHOW PAVILION                | RELOCATE CAMPUS MAINTENANCE |

## NORTH CAMPUS EWC FUTURE MAP

- PARKING EXPANSION
- POTENTIAL LAND PURCHASE



# Future Outdoor Space: Student Use

## Findings Suggest:

### Recommended Updates to Student Outdoor Spaces:

- Multipurpose Amphitheater
- Pergola
- Barbecue Area
- Expanded Pedestrian Pathways
- Pickleball Court
- Walking Trails
- Green Space
- Outdoor Basketball Courts
- Expanded Disc Golf



Feedback from students, faculty and community members reveal a growing need for additional outdoor spaces devoted to elevating the overall student experience. Recommended outdoor spaces include the addition of an amphitheater, barbecue areas, pickleball courts, a disc golf course, and pedestrian friendly pathways.

The **new amphitheater** will serve as a versatile venue for a variety of outdoor events while fostering a sense of community. The **pergola and barbecue areas** will act as inviting gathering spaces for students to congregate, socialize, and enjoy the outdoors.

The proposed **outdoor spaces** are strategically designed to broaden opportunities for students to engage in physical activity and leisure. The inclusion of **pickleball** courts and expanding a disc golf course enhances the variety of recreational offerings available and attracts community interest.

The proposed plan will also create a more walkable campus, characterized by **pedestrian corridors** and accessible outdoor areas. These enhancements encourage students to traverse the campus on foot while also promoting healthier, active lifestyles.

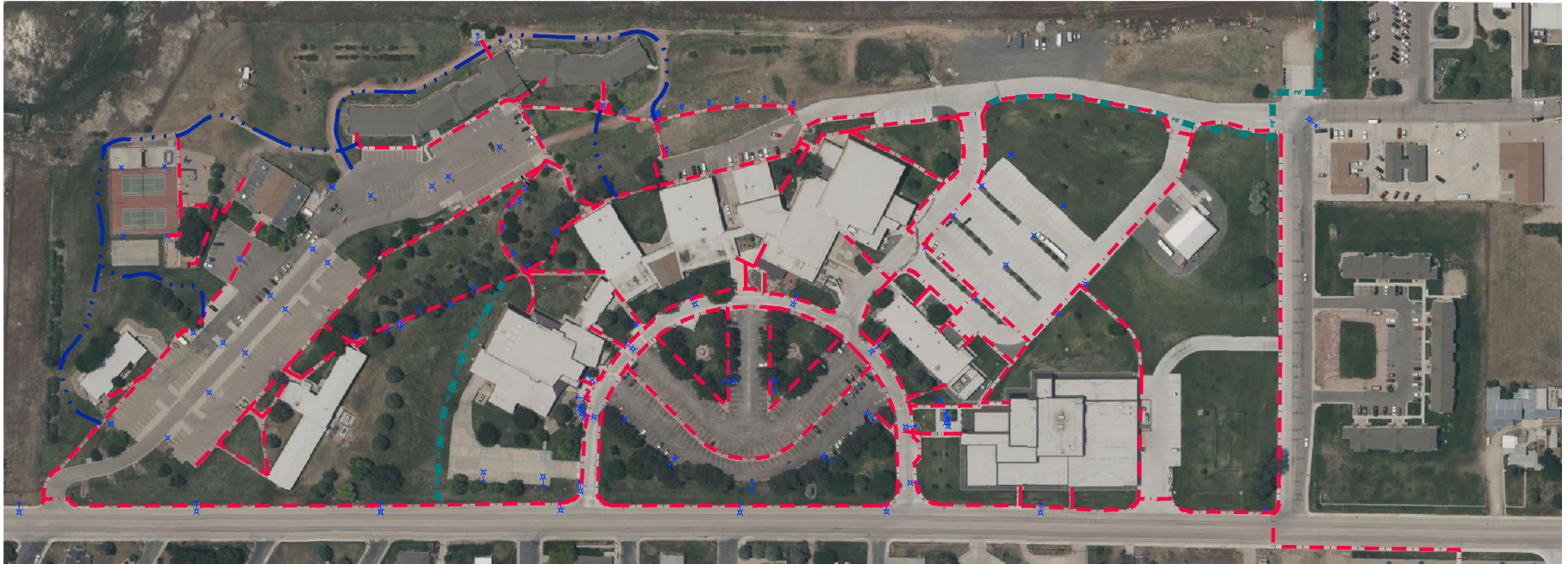
The newly developed outdoor pathways will **connect with the existing trail** system, enticing the public to make use of these picturesque green spaces. Connecting to the **Rotary Trail** will facilitate better public access to the campus and contribute to the local quality of life.

Enhanced **student-oriented outdoor spaces** are a substantial investment in the well-being, social cohesion, and physical health of EWC's campus community. These areas cultivate a sense of belonging, encourage outdoor recreation, and extend an open invitation to the public to enjoy our picturesque campus, ultimately enriching and invigorating campus life.









# Pathways Campus Map



## CAMPUS PATHWAY CONNECTIVITY

-  EXISTING CONCRETE PATH
-  PROPOSED PATH
-  PROPOSED 8' PATH (ROTARY)
-  EXISTING LIGHTING



Proposed pathway\*, which includes covered pedestrian corridors, will improve student access to campus facilities and connect the campus with the community. These pathways will also make it easier to move rodeo stock animals across campus, increasing efficiency.

\*The conceptual map is intended for early discussion and planning purposes only. It is subject to all applicable federal, state, regional, and local regulations which may impact the official design and should not be limited to the conceptual concepts only. Any decision or actions based on the conceptual map(s) should be made only after thorough review and compliance with the relevant regulatory requirements.

Extended Trails & Rotary Signage.....Cost: \$40k





# Anthropological, Classroom Lab, Office

In collaboration with the Sunrise Historic and Prehistoric Preservation Society, EWC aims to construct a leading museum and anthropological center at Sunrise Mine. The cultural significance of Sunrise Mine is so substantial that the Smithsonian has dated it as the oldest known mine in North America. Sunrise will create a backdrop for a field school and draw students globally for excavation, education, publication, and resource development.

This initiative will also add a museum and laboratory at EWC to extend the cultural reach to a wide array of both high school and college students and bolster the cultural offerings of EWC.



## Mobile Exhibit - Example Sunrise Mine

Remodel Existing Classroom: This project will create additional program space in collaboration with the museum. The expanded space will have exterior access, anthropological classroom space with adjoining lab, and additional office space for faculty.

Cost: \$100K



- 131 CLASSROOM
- 132 LABORATORY
- 131A OFFICE
- 132A OFFICE

## ANTHROPOLOGICAL CLASSROOM LOWER TEBBET BUILDING



# Douglas Campus

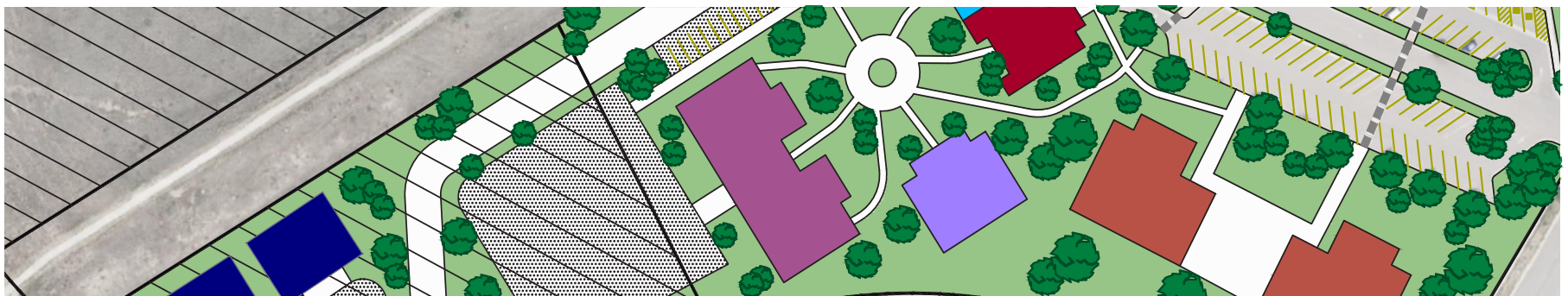
## Existing, Future, Parking

The visual representation of MC2's recommendations in the Campus Master Plan provides a framework for strategic additions and redesigned structures, all aimed at fostering a **technology-driven, integrated learning environment** that incorporates the Centers of Excellence philosophy.

- **Update Digital Technology and Cyber Security:** Modernizing digital technology and cybersecurity infrastructure is crucial for college campuses today. These improvements will keep EWC on the cutting edge of technological advancements, equipping students with the essential skills for success. Investing in cybersecurity will provide safety for students and staff while safeguarding digital assets.
- **Expanded Parking:** The expansion of parking facilities will address the current challenges related to limited parking space. It will not only ease access for students, staff, and visitors but also reduce parking-related confusion and congestion on campus.

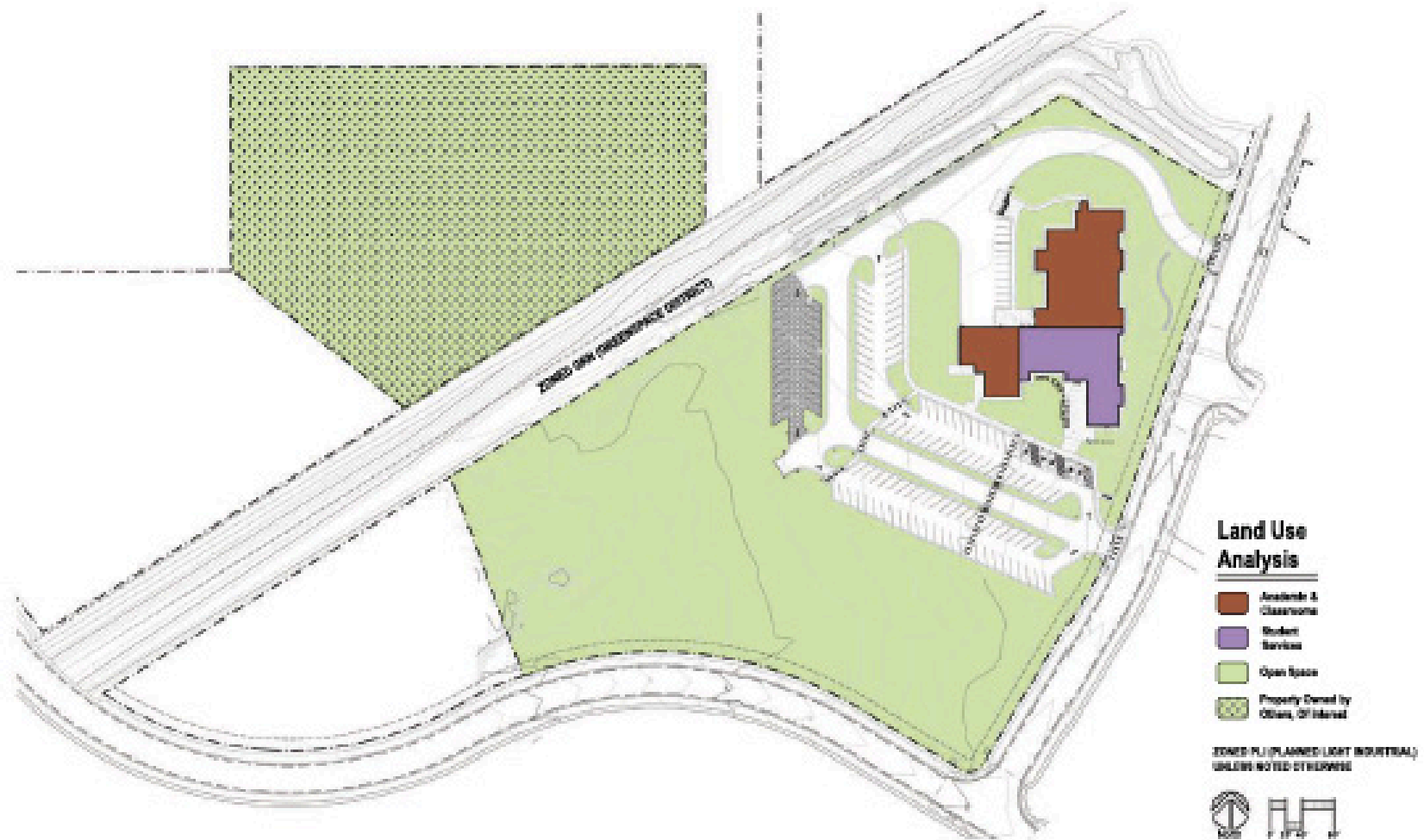
- **New Program Buildings:** The construction of these facilities enables EWC to expand academic programs in Douglas by offering modern, purpose-built spaces that enhance the learning environment. This includes an Economic Development Authority (EDA)-funded building approved before the master plan's completion. These facilities are versatile, supporting immediate, short-term, and long-term growth.
- **Potential Land Purchase:** Purchasing additional land supports EWC's commitment to future growth and development. This purchase allows for flexible campus expansion to meet evolving needs effectively.

These updates will strengthen EWC's educational offerings, supporting its skilled trades programs, including gunsmithing and advanced manufacturing. The changes will position the institution to achieve the vision outlined in EWC's Priorities and Expansion Opportunities document by developing Centers of Excellence to elevate the institution's reputation and contribute to its long-term success.

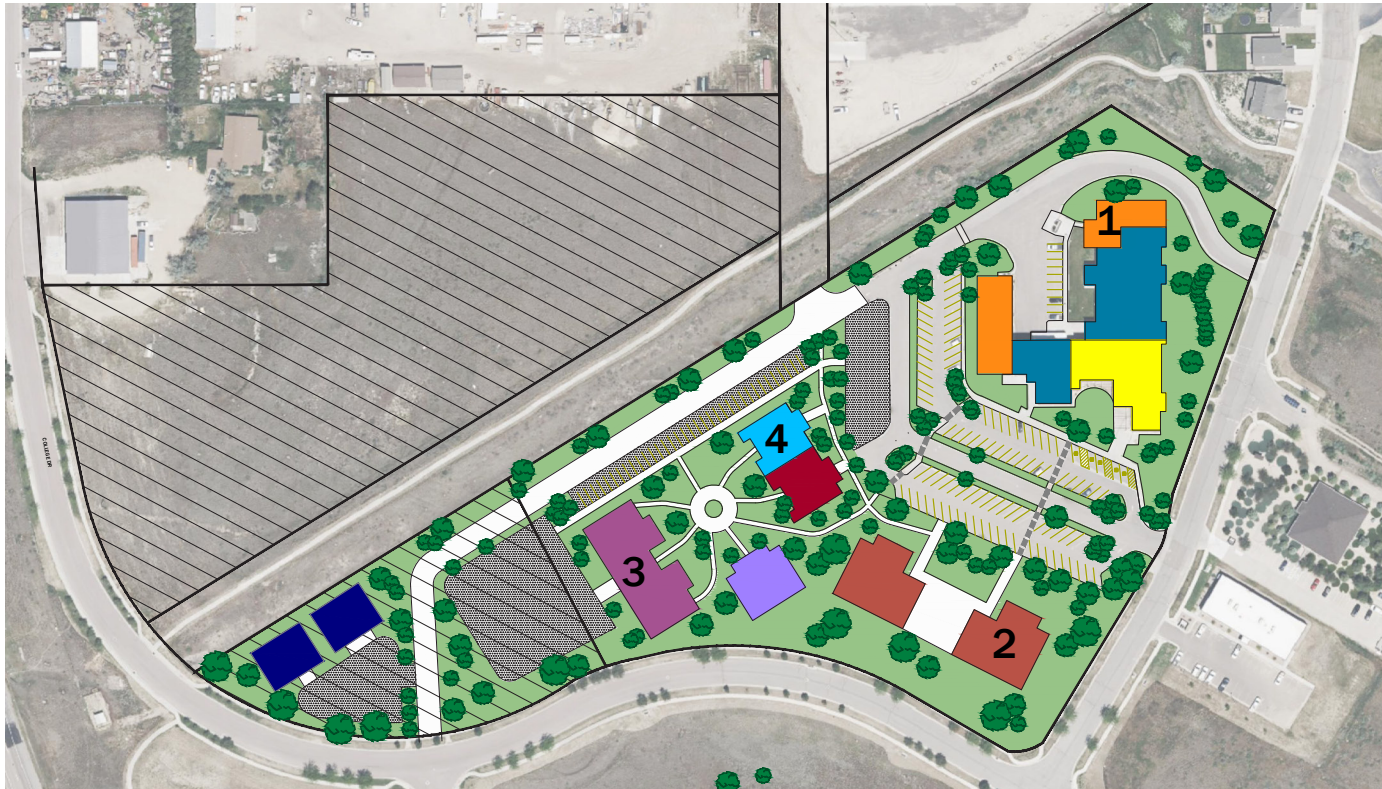





# ••••• Douglas Campus Existing Map

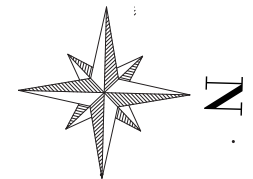


# Douglas Campus Future Map



 CONSTRUCTION TRADES EXPANSION	 CAMPUS MAINTENANCE	 WELLNESS/ RECREATION FACILITIES	 OPEN SPACE
 ACADEMIC & CLASSROOMS	 DORMITORIES	 FINE ARTS/ AUDITORIUM	 POTENTIAL LAND PURCHASE
 STUDENT SERVICES	 STUDENT UNION	 NEW BUILDINGS/ PROGRAMS	 PARKING EXPANSION

## DOUGLAS CAMPUS FUTURE LAND USE ANALYSIS



### CENTERS OF EXCELLENCE

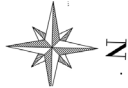
1. CONSTRUCTION TRADES PROGRAM
2. ADVANCED MANUFACTURING CENTER
3. ENTREPRENEURIAL WELCOME & RESIDENCE LIFE CENTER
4. HEALTH SCIENCE & CONVENTION CENTER





# Douglas Campus Future Map



**DOUGLAS CAMPUS EXISTING  
LAND USE ANALYSIS**



 TRAP SHOOTING FACILITY/  
UNDERGROUND SHOOTING RANGE

 CENTERS OF EXCELLENCE:  
VETERAN CENTER & HEALTH SCIENCE  
CENTER OF EXCELLENCE

 SPACE TBD

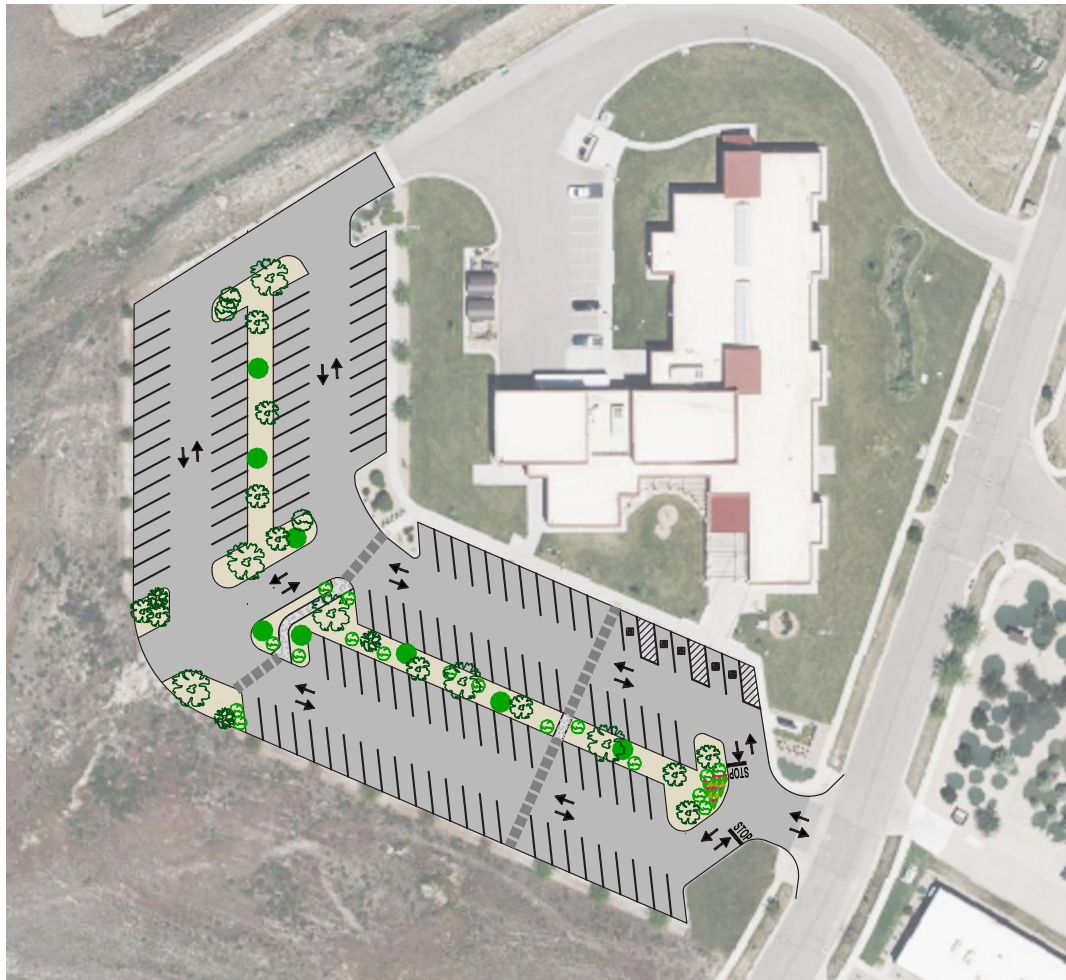
 EXPANSION OVERLAY







# Douglas Campus Parking Map



**EWC - DOUGLAS CAMPUS  
PARKING LOT RECONFIGURATION**

## Parking Issues on Douglas Campus

During MC2's site visit to the Douglas campus, staff expressed dissatisfaction with the functionality of the parking lot as currently designed.


Several issues were identified:

- **One-way access is inconvenient for students.** Students often jump the interior median to exit the parking lot rather than following the designated traffic pattern.
- **Constant maintenance is required for medians.** The interior medians contain landscaping and irrigation, which must be repaired multiple times a year to address damage caused by students.
- **Snow removal is difficult.** The parking lot layout causes increases the burden on staff and time required for snow removal.
- **Visitors are often confused about parking.** Confusion regarding parking lot navigation frequently results in drivers going the wrong way on a one-way road or making incorrect parking lot exits.

The proposed conceptual design addresses these concerns by allowing for two-way parking down each of the aisles. In addition, a turnaround point is incorporated at the halfway mark of the parking lot. This layout facilitates smoother vehicular traffic flow, maintains aesthetic appeal with a wide landscaped median, and simplifies snow removal. It also provides easier access to potential snow storage areas. Additionally, a separate parking area is incorporated for the EDA-funded expansion, increasing overall parking capacity and reducing congestion.







# Douglas Campus Improvements

After MC2's team reviewed the Douglas Campus with an onsite visit, interviews, and referencing historical records, several areas were identified that could be improved to better serve the needs of students and increase enrollment. These areas include:

**Living Learning Centers:** Integrated classrooms, food services, and recreation in Living Learning Centers, creating a dynamic environment for academic engagement. This unique approach fosters a seamless blend of living and learning, promoting personal growth and a sense of community for students with easy access to classrooms and collaborative spaces.

**Building Infrastructure:** Address issues in the building, including outdated communication cabling and boilers that shut off during storms, to prevent disruptions to day-to-day operations and ensure a smooth learning environment

**Classroom Space:** Upgrade the gunsmithing classroom floor to industrial grade material, like epoxy, for compatibility with instructional materials. Address cramped conditions and poor ventilation in the combined woodworking, milling, and welding areas by considering an additional on-site building to enhance the work-force training lab for the benefit of both students and faculty.

**Computer Classroom:** Optimize the computer classroom by removing the computer stations along the wall. With current wireless technology and laptops, there is no need for towered computer stations, enabling a more efficient use of space in the classroom.

**Parking Lot:** Reconfigure the parking lot to enhance traffic flow and minimize maintenance issues. The current parking lot's inadequate traffic flow leads to confusion, inconvenience, and maintenance issues, including broken sprinklers and damaged landscape. Winter snow removal is complicated due to the layout and landscaped islands.

## Douglas Projects & Estimates

Residence Hall .....	\$25M – \$45M
Storage.....	\$7K – 30K
Electrical Wiring.....	\$20K – 1.2M
Boiler Repair/Replace.....	\$25K – 45K
Extended Roof Drains.....	\$500 - \$5K
Gunsmith Safe/Vaults.....	\$500 – 10K
Classroom Expanded Program .....	\$750k – 1M
Reception/ADA Compliance .....	\$1K – 10K
Parking Redesign/Spacing.....	\$2K – 50K
Parking Island Demo .....	\$25K – 100K
Security/Asset Protection .....	\$50K – 200K

**Storage Building and Dormitories:** Construct a storage building on campus to house equipment for campus upkeep, eliminating the need for a distant storage barn. Considering the commuter nature of the Douglas campus, offering on-campus living and dining options, using Living Learning Center model, may attract students struggling to find local housing and potentially enhance enrollment

**EDA Expansion:** EWC will build an EDA-funded facility that was approved prior to the master plan's completion. This new addition will extend the existing campus infrastructure, enabling strategic expansion of programs and services to benefit students and the local community.

By addressing these areas, the Douglas Campus can better serve the needs of students and increase enrollment.







# Summary: Building a Dream Campus

The Centers of Excellence represent a strategic initiative for EWC to broaden its impact, offering multiple advantages to both the campus and neighboring communities. The subsequent pages will visually present some of these opportunities, setting the stage for visionary thinking and foundational growth. Accompanying maps will give a tangible concept of the potential layout of these facilities, serving as a practical framework for future planning and fundraising.

The Centers of Excellence vision includes identifying the following four facilities which will require strong community partnerships, bigger enterprise thinking, and a much larger funding development plan:



## LIVING LEARNING CENTERS

Living Learning Centers integrate co-located classrooms, food services, and recreational facilities within the same space. These innovative centers go beyond traditional housing arrangements, providing students with a dynamic environment that promotes academic engagement and personal growth, by fostering a seamless blend of living and learning. These Centers create a unique opportunity for students to immerse themselves in their educational journey. With easy access to classrooms and collaborative study spaces, students benefit from a well-rounded college experience that encourages both academic excellence and a sense of community.



## EVENT, WELLNESS, AND HEALTH SCIENCE CENTER

The proposed Event, Wellness, and Health Science Center is designed to enhance fitness and wellness opportunities for both the community and students. The Center includes an indoor and outdoor pool, a gym and specialized cardio and weight rooms. A medical and wellness spa located in the center that may expand academic programs to include massage therapy, esthetics, and more. The facility will house classrooms with hands-on job training for nursing and cosmetology students. To ensure community access and alleviate campus congestion, the Center will have dedicated parking.



## EVENT CENTER

The Event Center will also serve as a versatile community hub for cultural programs, hosting concerts, conferences, meetings, and more. The Center offers a professional venue that expands programming options for students, residents, and the wider region. The facility will have meeting rooms, concessions, a portable stage, and a kitchen for potential culinary programs.



## PATHWAY CORRIDORS

Pathway corridors will provide weather protection for students and staff, improving campus accessibility and comfort during inclement weather. This project reflects EWC's commitment to ensuring the well-being and comfort of its campus community.



## SPORTS COMPLEX

The Sports Complex is planned to feature a comprehensive set of facilities, including a football stadium, basketball courts, soccer fields, baseball diamond, indoor training center, and dedicated parking. This complex will enable EWC to enlarge its athletic and competitive team offerings, potentially attracting students from Wyoming and beyond. It is also expected to draw community sporting events, such as state championships, enhancing the college's role as a sporting hub to host regional, state or national events.



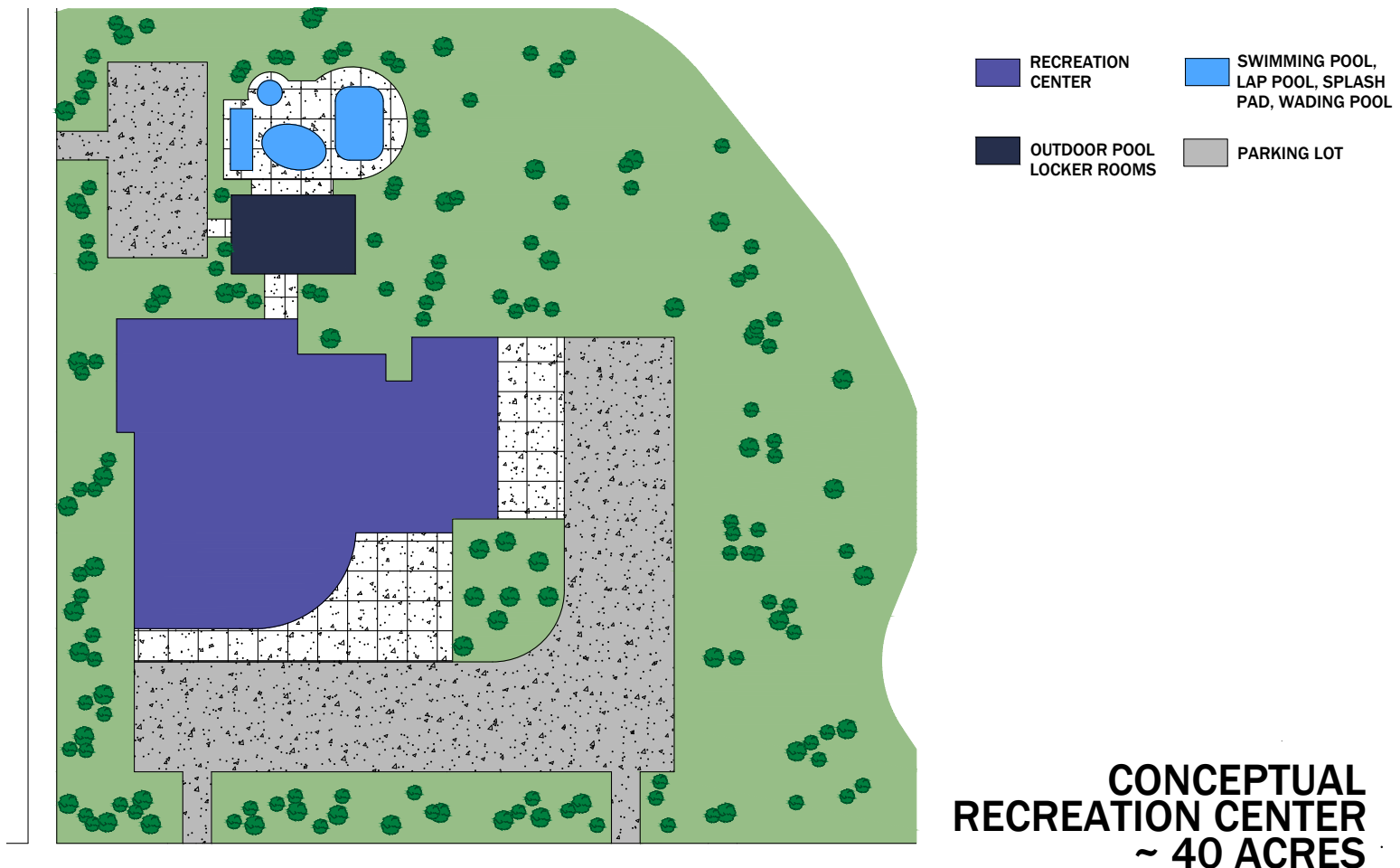
## RODEO COMPLEX

The Rodeo Complex, part of the Agricultural and Veterinary Sciences Center on campus, will be a modern facility with indoor and outdoor arenas, a spacious horse barn, and a large tack room. This project will enhance the Rodeo and Veterinary Technology programs by providing ample space for large animals and shared resources during classroom renovations. It will also be a valuable resource for hosting rodeo events, educational clinics, and retail partnerships at various levels.



# Event, Wellness, and Health Science Center

A state-of-the-art Event, Wellness, and Health Science Center will holistically address health and wellness needs, with expanded access to physical activities and fitness offerings such as weightlifting, yoga, and fitness classes. Situated adjacent to the nursing and cosmetology programs, the Center will give students and the public access to interconnected services in one location. The center will be open and accessible to the community for increased gym space, fitness opportunities, and cosmetology appointments.

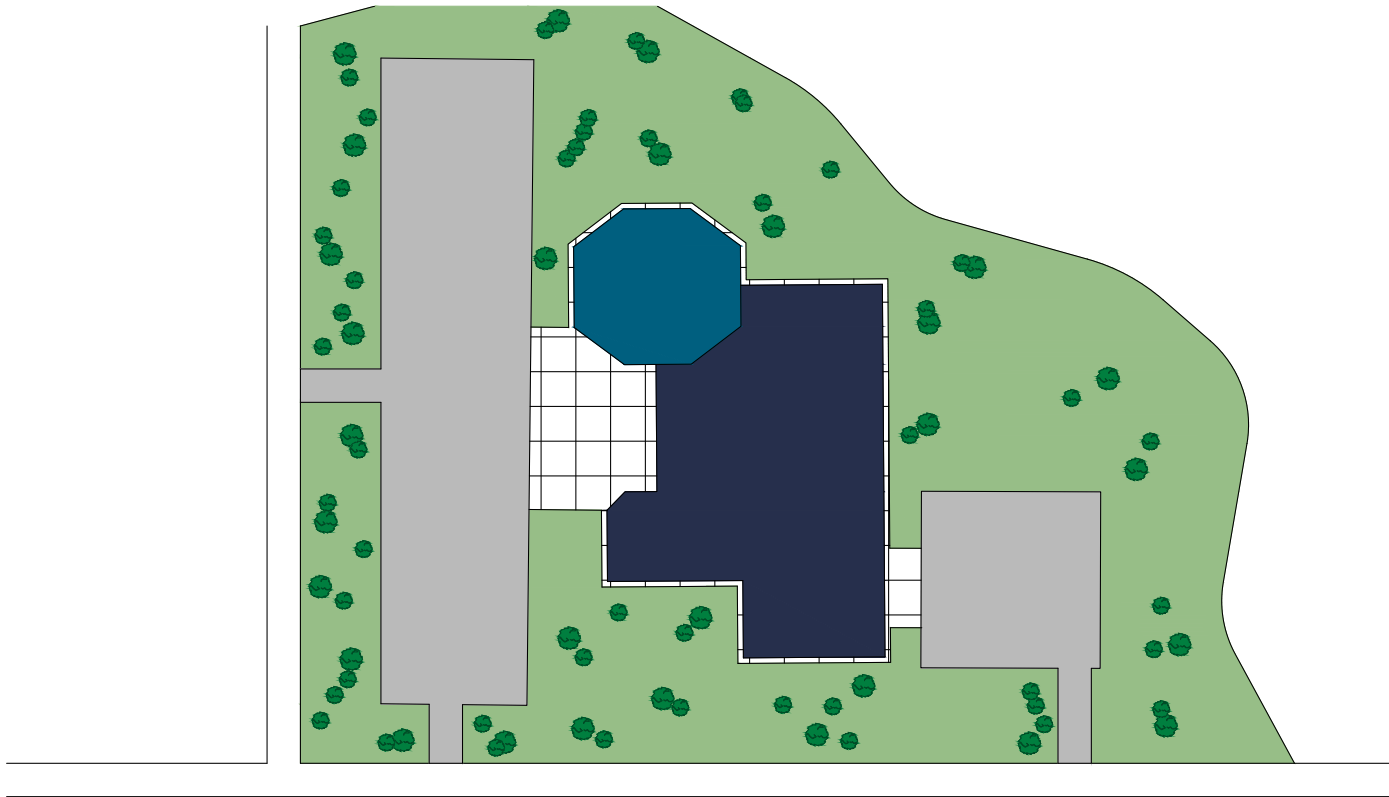









# Event Center

The Event Center, which is part of the Event, Wellness, and Health Science Center will benefit both EWC and Torrington, featuring modern amenities including a performance stage, meeting rooms, a commercial kitchen, storage, and parking. It will enhance EWC's educational offerings and establish Torrington as a key location for various large-scale events and cultural activities.



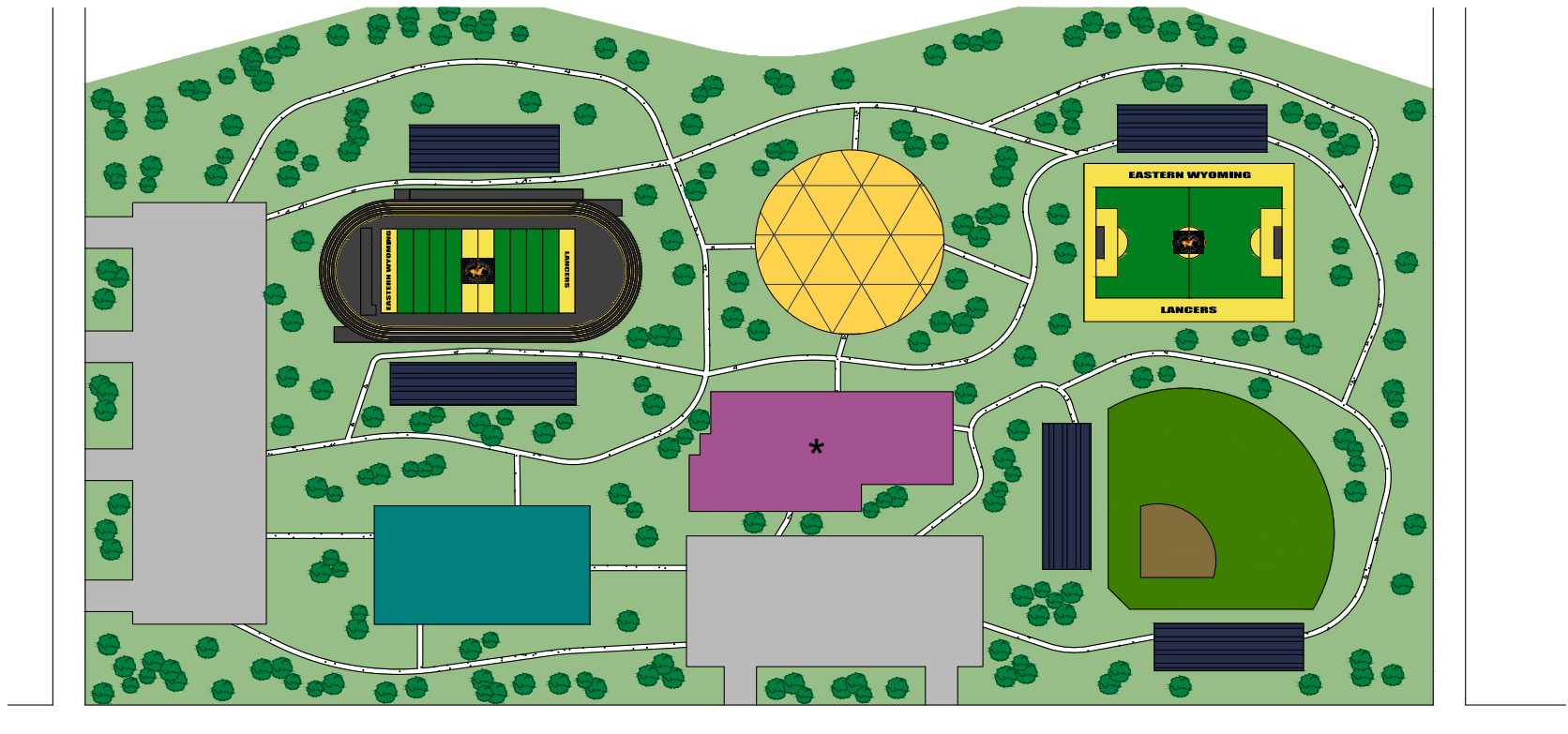
-  ARENA
-  CONVENTION CENTER
-  PARKING LOT

**CONCEPTUAL  
EVENTS CENTER  
~ 38 ACRES**



# Sports Complex

The Sports Complex will expand EWC's current athletics with a football stadium, soccer field, basketball court, baseball field, ticket office, and parking. This complex will provide more opportunities for student recruitment and increased community involvement, leading to higher enrollment and revenue.



- STADIUM SEATING
- 21ST CENTURY TEACHING AND LEARNING CENTER/HEALTH SCIENCE CLASSROOMS & LABORATORIES
- INDOOR PRACTICE FACILITY
- BASKETBALL ARENA
- PARKING LOT

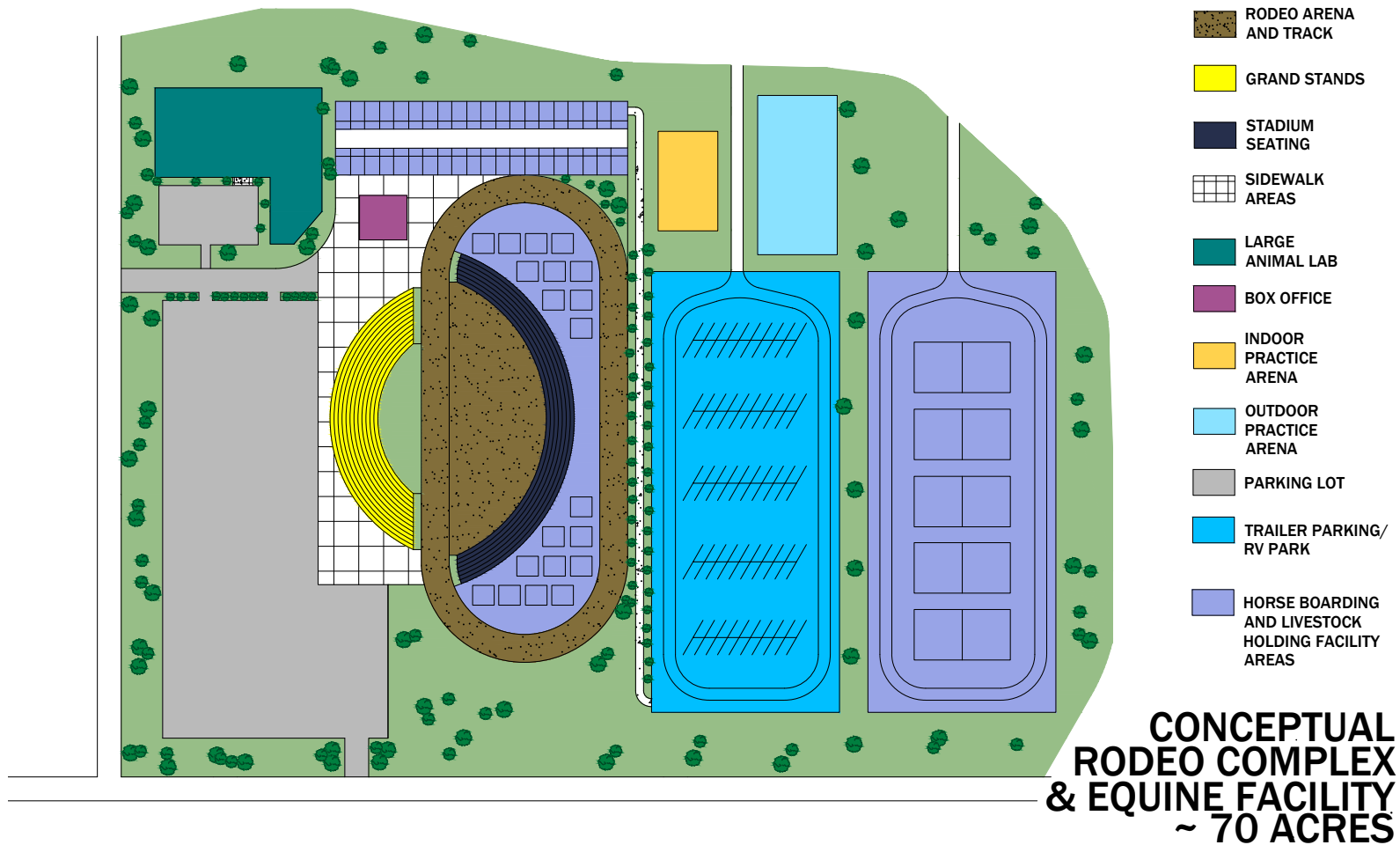
CENTERS OF EXCELLENCE  
 \* EVENT, WELLNESS AND HEALTH SCIENCES CENTER

**CONCEPTUAL  
 SPORTS COMPLEX  
 ~ 60 ACRES**



# Rodeo Complex

An extensive rodeo complex celebrates the west's rich heritage while providing EWC students with an impressive venue to perfect their craft. Boasting both an indoor and outdoor arena with a fully equipped horse barn including a tack room, boarding area, stalls, and storage, the arena is large enough to host national, regional, and local rodeo events giving EWC the ability to bring economic development to the region. Two separate parking lots with space for trailers will accommodate simultaneous or large-scale events at the complex.



# Public Input: Student Focused

During the development of this Facilities Master Plan, MC2 actively sought and received valuable community input, including comments, questions, and suggestions. The participants contributed insightful feedback and proposed several noteworthy BIG Ideas for future consideration on both campuses. While these ideas exceed the scope of the current plan, they merit acknowledgment as each has the potential to significantly enhance EWC's campus, program offerings, and community engagement.

- **Indoor Shooting Range:** The addition of a state-of-the-art indoor shooting range, emphasizing safety and education, could serve as an asset to EWC's gunsmithing program. This feature also holds potential for creating opportunities for broader community usage. Collaboration with industry partners being pivotal if this project is undertaken.
  - **Recreation Center:** The Recreation Center will be vital community hubs in a rural setting, offering services like healthcare, sports, education, and childcare. New facilities being considered are the Recreation Center for health and sports activities, and the Event Center for cultural events and private functions to enhance community ties and personal growth.
  - **Amphitheater and Tourism Center:** EWC's footprint is home to the Oregon Trail and the cradle of the Platte River Valley. For the past 15,000 years, historic and modern settlers have traversed the Platte River Valley bringing with them a unique culture, story, and an indivisible spirit that serves as the backdrop for our unique heritage. The amphitheater and tourism center will be an outdoor cultural hub for events, economic development, and serve as an anchor for connected community recreation.
- **American Center for Rural Leadership and Economic Development:** Torrington and Goshen County provide one of the most unique learning environments of any destination in Wyoming. Our uniqueness stems from a pioneering spirit imbued with rural values, underscored by Wyoming's motto of "Forever West." EWC will become the destination for rural thought leadership and economic advancement. EWC will host corporations and teams from across the nation and sharing rural value implementation and development.
  - **Library Enhancement:** Proposed improvements include window tinting to enhance the study environment and reconstructing the entrance to be more inviting and welcoming.
  - **Sports and Competitive Teams:** Sports and Competitive teams hold a distinct and crucial role in shaping the culture and character of rural community colleges. They offer a platform for students to engage in healthy competition, develop a sense of belonging, increase personal development and academic achievement creating a vibrant campus life that is a draw for prospective students.
  - **Veterans Center:** Building a Veterans Center on a college campus provides a dedicated space to support and cater to the unique needs and experiences of military veterans pursuing higher education.







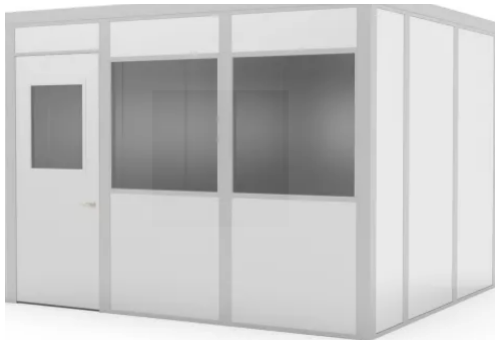
Library Concept



New CPR Mannequins



Climate Resistant Landscaping



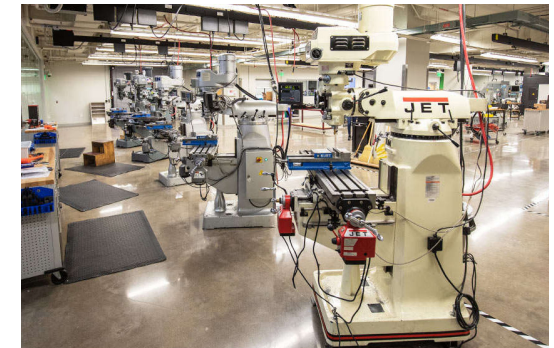
Storage Options

## PUBLIC INPUT: STUDENT FOCUSED

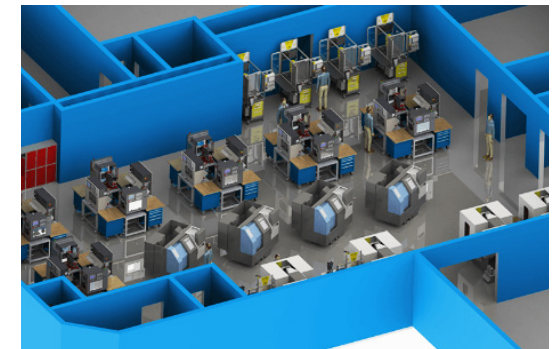
**Storage:** Storage concerns have a direct impact on education delivery and facility use, and addressing immediate, short-term, and long-term storage requirements is crucial to providing students with the optimal educational experience.

- **Precision Labs:** Advanced Manufacturing: The development of these labs will foster innovative research, hands-on training, and industry collaboration, equipping students with valuable skills and preparing them for high-demand careers in the modern manufacturing sector.
- **Updated Landscape:** This project, although not currently under consideration, would enhance the natural beauty of campus, include climate resistant landscaping and create a welcoming campus experience.

These community-driven suggestions emphasize the needs, ideas, and innovations from key stakeholders that could be considered in future campus plans and updates. These enhancements would serve to further enrich EWC's offerings, aligning with our commitment to continuous improvement and community engagement.



Precision Lab Concept











# Safety and Security



## Location and distances of Eastern Wyoming Community College to emergency response services

- **Community Hospital**  
2000 Campbell Drive – .5 miles
- **Torrington Emergency Medical**  
2241 East B Street – 1.2 miles
- **Torrington Volunteer Fire Department**  
2001 West C Street – 1.3 miles
- **Torrington Police Department**  
436 East 22nd Avenue – 1.3 miles
- **Goshen County Sheriff's Office**  
2120 East B Street – 1.4 miles



## 2023 Torrington Police Response calls to Eastern Wyoming College

77 calls for response and nine (9) resulted in an incident report.

Following are the listed reports:

- (1) Type – Meeting
- (1) Type – Suspicious Circumstance
- (1) Type – Traffic Complaint
- (5) Type – Motor Vehicle Accident
- (1) Type – Fraud

\* No motor vehicle incidents involving pedestrians reported on campus from December 2018 - October 2023 between ATEC and main campus.







# Costs Detailed

## Cost Estimates

Cost estimates are derived from local cost estimated expertise and enhanced by industry best practices, historical cost data and relevance to the Wyoming region. All stated costs in the master plan report will assist with planning and budgeting purposes. These are estimates and costs will vary at the time of construction which is why a design/build/estimate and a formal RFP will be recommended based on EWC's planning priorities.



“An institution of higher education is a partnership among students and alumni, faculty and administrators, donors and trustees, neighborhoods and more, to build a community – and a culture.”  
Ben Sasse





## Safety and Security

EWC's plan includes implementing comprehensive measures that can provide a secure campus environment, thereby diminishing the potential for security threats. The college responds well to safety and security issues. These updates will increase the effectiveness in these changing times.

The enclosed information can be used to seek and secure grant funding based on what has been identified by students and staff, currently needed, and balanced with what meets budget allocations.



Community colleges are an important part of the education system, and it is essential to ensure that everyone is safe and secure including students, faculty, staff, and campus visitors. Here are some recommendations for safety and security capital improvements for EWC:

**Conduct regular safety and security audits:** Before making any capital improvements, it is essential to conduct a safety and security audit to identify potential risks and vulnerabilities. This audit should include a review of the physical infrastructure, emergency response plans, and security protocols.

**Install security cameras:** Installing security cameras in strategic locations can help deter criminal activity and provide evidence in case of an incident. Cameras should be placed in parking lots, entrances, and other high-traffic areas.

**Install emergency call boxes in pedestrian friendly pathways:** Installing emergency call boxes in strategic locations can deter criminal activity and provide a sense of security that help can be called upon if needed. Boxes should be located in pedestrian, well-traveled locations between dorms and other campus areas.

**Upgrade lighting:** Adequate lighting is essential for safety and security. Upgrading lighting in parking lots, walkways, and other areas can help deter criminal activity and make it easier to identify potential risks and decrease fall risks.

**Install access control systems:** Access control systems, such as key cards or biometric scanners, can help control who has access to certain areas of the campus. This can help prevent unauthorized access and improve overall security.

**Improve emergency communication systems:** In case of an emergency, it is essential to have effective communication systems in place. This can include emergency notification systems, two-way radios, and other communication devices.

**Conduct regular safety and security training:** Regular safety and security training for faculty, staff, and students can help ensure that everyone knows what to do in case of an emergency. This training should include emergency response procedures, evacuation plans, and other safety protocols.

By implementing these recommendations, EWC can improve safety and security on the campuses and create a more secure learning environment for everyone.

## Cost Estimates

Security cameras, call boxes & lighting will cost an estimated

\$50K-200K

### ITEMIZED COSTS:

Outdoor Lighting \$75K

Communication System \$25K-40K

Call Box \$7K/each

Indoor Siren \$25K

Additional Beacons \$40K

Yearly Costs \$85K



# Student Requested Amenities

## Pergola

- Gathering space to encourage community
- BBQ, kitchen, catering options
- Community connections, meetings and scheduled celebrations
- Program use and shaded seating



## Study Spaces

- Space for quiet study and collaboration
- Individual and small group settings
- Comfortable seating
- Technology access



## Student Services

- A comfortable place to prepare for the future, study, and socialize
- Student Services is a safe place and welcoming to all
- ADA compliance
- Private areas for interviews, faculty meetings



## Athletic Facilities

- Opportunities for physical activity and recreation
- Refurbished tennis and basketball courts



## Amphitheater

- Open space for concerts, meetings, and other gatherings
- Cultural hub
- Tourism options and offerings
- Local recitals and community partnerships
- Informal and seasonal setting



## Activities

- Self-guided activities such as: chess, swings, and hammocks
- Unscheduled use
- Non-athletic activities





# Big Ideas: Program Specific Requests

EWC Programs are the training grounds preparing students for career success. Public input inspired examples of program needs to upgrade the facilities and enhance the programs.

## Manicure & pedicure stations

- Modern industry standard equipment students will use in the marketplace
- Increase in comfort and safety for students and faculty

COST: \$13K - \$38K



## Nursing

- New CPR Mannequins for state of the art training  
COST: \$1,800
- Lab Space with a two way mirror for hands on learning  
COST: \$35K



## Smart storage

- Portable and temporary storage flexible to meet changing needs
- Short term storage, easily accessible for frequently needed items
- Long term storage, permanent storage for continuing needs

COST: \$7K - \$30K



## Gunsmithing

- Walk in vaults for safe and secure storage

COST: \$500 - \$10K



## Security

- Security Cameras ensure safety of students, staff and community members
- Emergency call boxes provide peace of mind that help is just a phone call away allowing everyone to feel secure while on campus.

COST: \$50K - \$220K



## Storage

- Temporary and Short Term
  - Possible to Relocate
- |                 |            |
|-----------------|------------|
| Temporary.....  | COST \$7K  |
| Short Term..... | COST \$15K |
| Long Term.....  | COST \$30K |







# Costs: Centers of Excellence

	<b>Centers of Excellence</b>		
Torrington	<b>Teaching, Learning and Computer Science Center</b>	New Construction	<b>\$ 12M - 18M</b>
Torrington	<b>Agricultural and Veterinary Science Complex</b>	New Construction	<b>\$ 20M - 30M</b>
Torrington	<b>Event Wellness and Health Science Center</b>	New Construction	<b>\$ 25M - 30M</b>
Torrington	<b>Entrepreneurial Living and Business Center</b>	New Construction	<b>\$ 10M - 15M</b>
Torrington	<b>Advanced Manufacturing Center</b>	New Construction	<b>\$ 15M - 25M</b>
Torrington	<b>Honor and Heritage Pavilion</b>	New Construction	<b>\$ 3M - 5M</b>
	<b>Centers of Excellence</b>		
Douglas	<b>Construction Trades - Expansion</b>	New Construction	<b>\$ 5M</b>
Douglas	<b>21st Century Educational Outreach Centers</b>	New Construction	<b>\$ 18M - 22M</b>
Douglas	<b>Advanced Manufacturing Center</b>	New Construction	<b>\$ 25M - 30M</b>
Douglas	<b>Entrepreneurial Welcome and Residence Life Center</b>	New Construction	<b>\$ 15M - 20M</b>
Douglas	<b>Health Science and Convention Center</b>	New Construction	<b>\$ 8M - 12M</b>
Douglas	<b>Gateway and Pedestrian Signage</b>	New Construction	<b>\$ 295K</b>
Douglas	<b>Residence Hall</b>	New Construction	<b>\$ 25M - 250M</b>
Douglas	<b>Storage Building</b>	Temporary	<b>\$ 7K</b>
		Short Term	<b>\$10K</b>
		Long Term	<b>\$ 30K</b>
		Permanent - All Inclusive	<b>\$100K - 150K</b>





# Phase Planning

This plan encompasses four phases spanning several years, enabling EWC to address deferred maintenance projects and recommendations outlined in the Master Plan, each with unique objectives and timelines.

## Phase I (Q1 – Q2 2024)

This phase focuses on planning, gathering stakeholder feedback, budgeting, and securing funding. EWC addresses deferred maintenance issues across campuses and identifies immediate, short-term, and long-term needs. Establishing comprehensive maintenance plans for existing and planned buildings is essential for realistic budgeting, laying the foundation for the entire project, and facilitating the implementation of priority projects in future phases. EWC may develop Request for Proposals for prioritized projects during this phase to estimate project timelines and actual costs.

## Phase II (Q2 – Q4 2024)

This phase finalizes the deferred maintenance plan, schedules deferred maintenance projects, and initiates intermediate maintenance projects. EWC selects and prioritizes the projects and finalizes timelines and costs for each. This phase also includes ongoing efforts to secure funding for prioritized projects, including Centers of Excellence on both campuses. Project specific RFPs for upcoming projects may also be developed during this phase.

## Phase III (Q3 2024 – Q4 2026)

Phase III completes or continues Priority I & II Projects, including some intermediate maintenance projects. EWC also begins planning long-term maintenance projects. Additionally, one or more of the prioritized facilities projects commence during this phase. The focus remains on efficiently and effectively executing projects vital to our institution.

## Phase IV (Q3 2025 – Q4 2026)

The final phase of our Master Plan concentrates on completing Priority III & IV projects and initiating long-term maintenance projects. EWC may also start the prioritized projects, including Centers of Excellence, pedestrian corridors, and an Event, Wellness, and Medical Science Center. Phase IV will analyze successes, emerging needs, and determine the next steps concerning project completion, priority changes, and funding.



# Conclusion

The Master Plan recommends strategies that incorporate Eastern Wyoming College's (EWC) goals, priorities, and vision for the future. This plan represents a roadmap that will ensure EWC is able to continue providing quality educational opportunities to students while investing in state-of-the-art wireless technology, and ensuring campuses meet changing community needs. This plan acknowledges EWC's existing strengths and its potential to align these strengths to foster academic excellence, while grappling with current obstacles and opportunities for growth.

The Plan primarily focuses on the Centers for Excellence new construction projects that address space requirements, major initiatives that define infrastructure deficiencies and campus life improvements. It aims to maximize opportunities for renewal and renovation. The Plan outlines an ambitious list of projects to be undertaken during the 2024-2026 planning period. The timeline for implementation will depend on available funding, with established priorities and sequencing. BIG IDEAS from the public process that included students, staff, faculty and community stakeholders with surveys, panel discussions, open houses settings and collective data and research from previous plans

This plan will serve as a guiding framework for EWC's leadership as they engage in collaborative efforts with the Wyoming legislature and the Wyoming Community College Commission to secure capital funding. The plan will also play a pivotal role in directing college leadership in various endeavors, encompassing facility planning, expansion, improvement projects, and enhancements to physical service areas.

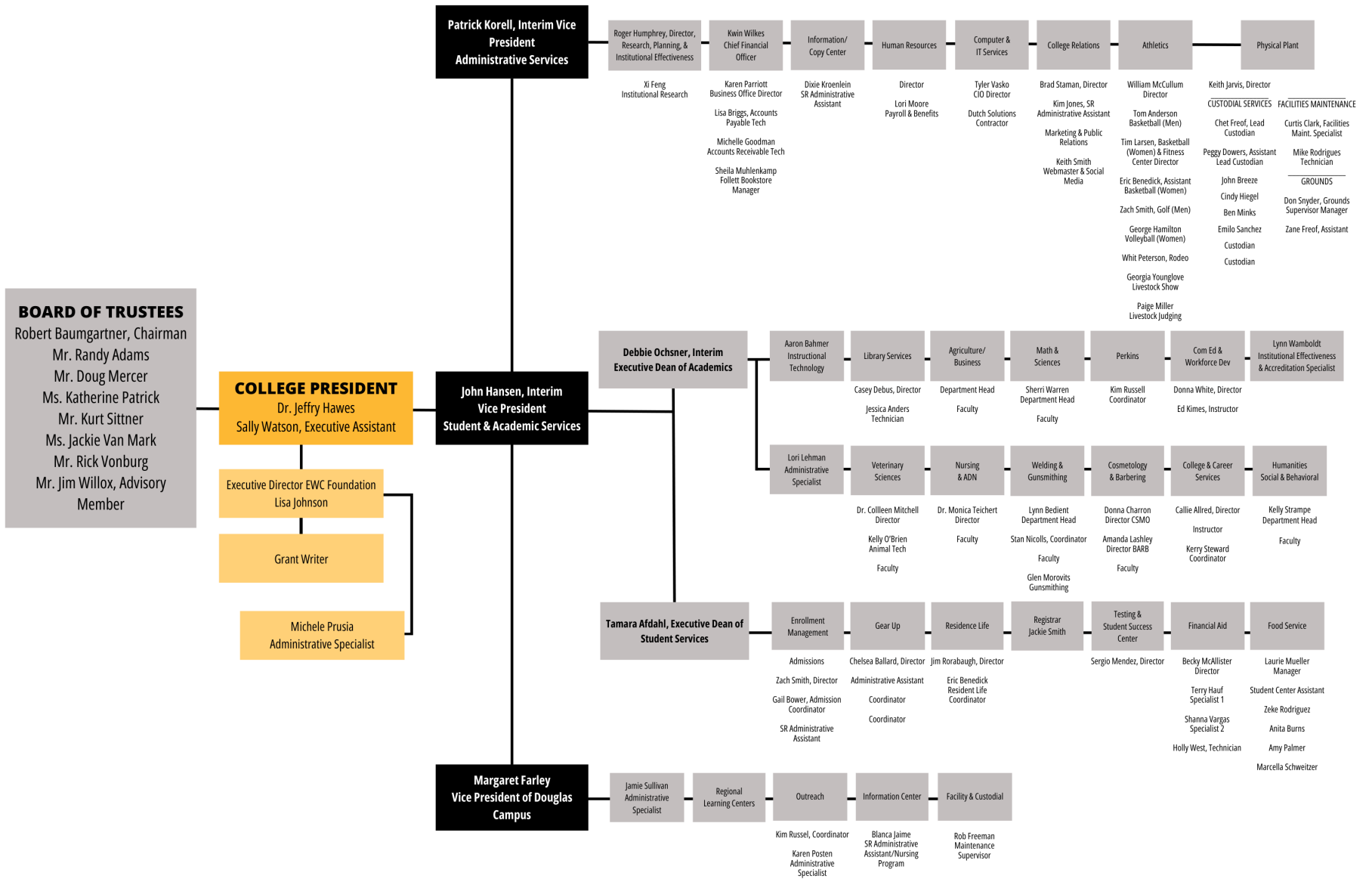
The Master Plan consists of four crucial documents, each serving a specific purpose:

- **Executive Summary:** This document offers a concise overview of the plan's framework. It provides a high-level understanding of the key objectives and strategies, making it an ideal resource for those seeking a quick and comprehensive grasp the essence of the plan.
- **Quick Reference Guide:** This document is for the press and the board of directors. It simplifies the plan's important information, making it easy for stakeholders to access without going through long documents. It makes communication and decision-making simpler.
- **Essential Guide:** The heart of the Master Plan lies within the Essential Guide. This comprehensive document delves deeply into the plan's content, offering information, strategies, and insights. It serves as the primary resource for stakeholders, providing an in-depth understanding of the plan's goals, priorities, and implementation strategies.
- **Technical Document:** The Technical Document contains complex details, data, and technical information, including maps, cost lists, and stakeholder comments. It's the primary source for anyone seeking in-depth technical information, conducting research, or referring to specific details.

Together, these four documents form a versatile and comprehensive toolkit that actively supports EWC in fulfilling its mission while prioritizing student success, creating opportunities for students to realize their aspirations, and contributing to regional enrichment through collaborative work, partnerships, and the remarkable achievements of its students.



# Eastern Wyoming College Organizational Chart





# Acknowledgments

## **EWC Board of Trustees:**

Robert Baumgartner  
Randy Adams  
Doug Mercer  
Katherine Patrick  
Kust Sittner  
Jackie VanMark  
Rick Vonburg  
Jim Wilcox

## **EWC Foundation:**

Janice Atkins-Neva  
Kim Evezich  
Todd Peterson  
Denton Shaw  
Bob Baumgartner  
Joe Guth  
Tim Pexton  
Kelly Sittner  
Brayden Connour  
Dr. Jeffrey D. Hawes  
Scott Prusia  
Kurt Sittner  
Cactus Covello  
Lisa Johnson  
Ryan Schilreff  
Dr. Marion Smith  
Grant Curry  
Zach Miller  
Bryan Schlagel  
Rick Vonburg  
Martin Winchell

## **EWC Faculty:**

Jeffrey D. Hawes, PhD – President  
Patrick Korell, JD – Interim Vice President of Administrative Services  
Debbie Ochsner, LCSW, EdD – Interim Executive Dean of Academics  
John Hansen – Interim Vice President of Student and Academic Services  
Margaret Farley, EdD – Vice President of Douglas Campus  
Tami Afdahl – Executive Dean of Student Services  
Georgia Younglove, PhD – Professor – Agriculture & Livestock Show Team Coach  
Monte Stokes, DVM – Professor – Agriculture/Agriculture/Business  
Matt Scott – Assistant Professor – Precision Agriculture  
Ellen Creagar, JD – Professor – Social Science/Business  
LeAnn Smith, EdD – Associate Professor – Education  
Kelly Strampe – Associate Professor – English  
Glenna Zwiebel – Assistant Professor – Cosmetology  
Amanda Lashley – Associate Professor – Barbering  
Donna Professor/Director of Cosmetology  
Monica Teichert, DNP, FNP-C – Director of Nursing  
Amber Salmon – Assistant Professor – Nursing (Douglas Campus)  
Kasey Powell – Assistant Professor – Nursing (Douglas Campus)  
Jennifer Boxberger – Associate Professor – Nursing  
Jake Clark – Associate Professor  
Todd Ascherl – Assistant Professor – Chemistry  
Luke Audette – Assistant Professor – Math  
Chris Wenzel – Professor – Biology  
Sherri Warren – Assistant Professor – Department Head – Math/Science (Douglas Campus)  
Christy Feagler, LVT, CVT – Associate Professor  
Kate Norton, CVT – Associate Professor  
Kerry Weaver, CVT – Assistant Professor  
Kelly O'Brien, LVT, CVT – Animal Care Specialist  
Colleen Mitchell, DVM – Professor – Program Director – Veterinary Technology  
Stan Nicolls – Welding Lab Coordinator and Instructor  
Joel Alworth – Assistant Professor – Welding  
Glen Morovits – Assistant Professor – Gunsmithing (Douglas)





# Acknowledgments

## **EWC Staff:**

Kwin Wilkes – Chief Financial Officer  
Karen Parriott – Director – Business Office  
Brad Staman – Director of College Relations  
Becky McAllister – Director of Financial Aid  
Callie Allred – College & Career Readiness Center Director  
Brad Staman – Director of College Relations  
Roger Humphrey – Dir of Research, Planning & Institutional Effectiveness  
Jimmy Rorabaugh – Director of Residence Life  
Donna White – Associate Director – Workforce Development/Community Education  
Tyler Vasko – Chief Information Officer  
Xi Feng – Data Analyst  
Sergio Mendez – Student Success/Testing Center Director  
Gail Bower – Admissions Coordinator  
Keith Smith – Webmaster  
Kim Jones – Senior Administrative Assistant – College Relations  
Sally Watson – President's Office – Executive Assistant  
Dixie Kroenlein – Senior Admin Assistant – Information Center  
Lori Lehmann – Academic & Student Services Admin Specialist  
Michelle Goodman – Accounts Receivable Technician  
Lisa Briggs – Accounts Payable Technician  
Holly West – Financial Aid Technician  
Shanna Vargas – Financial Aid/Outreach Specialist  
Aaron Bahmer – Technologist  
Jessica Anders – Library Technician  
Casey Debus – Library Director  
Laurie Mueller – Food Services Manager  
Zeke Rodriguez – Assistant Manager – Food Services  
Anita Burns – Cook  
Amber Holen – Grant Writer  
Michelle Prusia – Administrative Specialist  
Lori Moore – Payroll & Benefits Specialist  
Ed Kimes – CDL Program Instructor/Specialist  
Keith Jarvis – Director – Physical Plant

Curtis Clark – Facilities Maintenance Specialist  
Don Snyder – Grounds Manager  
Emilo Sanchez – Custodian  
John Breeze – Custodian  
Tom Andersen – Men's Head Basketball Coach  
JD Wisener – Women's Head Volleyball Coach  
Whit Peterson – Head Rodeo Coach  
Paige Miller – Livestock Judging Coach  
Tim Larsen – Women's Head Basketball Coach & Director of Fitness Center  
Zach Smith – Dir of Enrollment Management & Head Gold Coach  
Sheila Muhlenkamp – EWC Bookstore Manager

## **Students:**

Beau Murphy  
Jesse Madsen  
Hanna Wiskus  
Kaitlyn Rector  
Mesa Krautschun  
Shelby Carr  
Connor Willard  
Garrett Green  
Michaela Keller

## **Public:**

Lisa Johnson, MOL – Orbis Advantage, Inc.  
Rachelle L. Anderson, PE. – Bench Mark of Torrington  
Jackie Van Mark, Sales Associate – CENTURY 21 Valley Realty Company  
Jim English – Principal Torrington High School  
Ryan Kramer – Goshen County School District  
Jeff Jones – President – Goshen County Economic Development  
Jackie Van Mark – Vice President – Goshen County Economic Development  
Zach Miller – Secretary/Treasurer – Goshen County Economic Development  
Scott Prusia – Past President – Goshen County Economic Development  
Elias Chavez – Teacher Social Studies – Torrington High School  
Cory Gilchrist – Principal – K-12 Lingle – Ft. Laramie Schools  
Shelly Duncan  
Rhett Breedlove – Torrington Telegram  
Justin Loeffler – Green Tree Ag  
Kyle Rafferty – J G Elliott  
Tyler Floerchinger – Principal – Trail Elementary  
Tim Williams – Principal - Southeast  
Leann Smith  
Ellen Cramer



The EWC Master Plan was prepared by MC2 Collaborative, an engineering and strategy consulting firm based in Sheridan, Wyoming. MC2 Collaborative's team of professionals offer engineering, construction, planning, and resource acquisition services throughout most of the western United States. They pride themselves on delivering unique options and focused solutions for clients of all sizes.



902 North Main Street  
Sheridan, WY 82801  
307.673.7350  
[mc2office@mc2collaborative.com](mailto:mc2office@mc2collaborative.com)  
[www.mc2collaborative.com](http://www.mc2collaborative.com)



