



# Platte County

FALL 2024 • COMMUNITY ED & CREDIT CLASSES

NONPROFIT ORG  
US POSTAGE  
PAID  
TORRINGTON, WY  
82240  
PERMIT NO. 14

**ECRWSS**



# EW C OUTREACH





# EWC Outreach • Platte County



Guernsey Community Education  
ewc.wy.edu/about-ewc/outreach/guernsey/

**Lori Ibarra**

Guernsey Community Education  
libarra@ewc.wy.edu

Guernsey-Sunrise High School  
172 W. Burlington, Room 218  
Guernsey, Wyoming 82214  
877-202-1020  
Cell • 307.401.2081  
Fax • 307.293.8040



Wheatland Community Education  
ewc.wy.edu/about-ewc/outreach/wheatland/

**Tamara Stenson**

PCSD #1 Community Ed Coordinator  
tstenson@ewc.wy.edu



Guernsey Outreach  
ewc.wy.edu/about-ewc/outreach/guernsey/

**Karen Posten**

kposten@ewc.wy.edu

For appointment please call •  
307.532.8349



## EWC Board of Trustees

Ms. Jackie Van Mark, Chair  
Mr. Rick Vonburg, Vice Chair  
Ms. Katherine Patrick, Treasurer  
Mr. Randy Adams, Secretary  
Mr. Bob Baumgartner  
Mr. Doug Mercer  
Mr. Kurt Sittner  
Mr. Jim Willox, Converse County Advisory Member

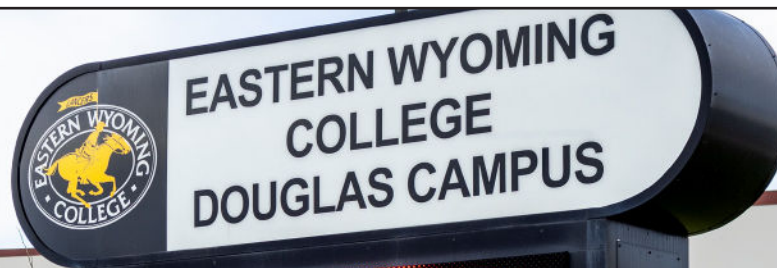
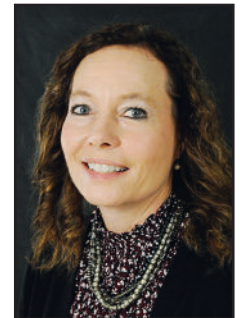


## EWC President

Dr. Jeffrey D. Hawes  
jhawes@ewc.wy.edu

## Vice President of Douglas Campus

Dr. Margaret Farley  
307.624.7000  
mfarley@ewc.wy.edu



# Charge into your future

## with the Outreach/Douglas Campus Incentive Grant

The Outreach/Douglas Campus Incentive Grant is available to any student who is seeking a degree or certificate with EWC who has at least a 2.00 GPA and who is taking the majority of his/her classes at or through an EWC Outreach Center or the Douglas Campus. The award pays in-state tuition for five or more credits. Current and transfer students must meet Satisfactory Academic Progress eligibility requirements as established in the EWC Satisfactory Academic Progress Policies for Financial Aid.

**For more information or to apply call the EWC Financial Aid Office**

**307-532-8326 or [financialaid@ewc.wy.edu](mailto:financialaid@ewc.wy.edu)**



# How to Register



## GUERNSEY OUTREACH

Online\*  
Lori Ibarra  
Guernsey Community Education  
libarra@ewc.wy.edu

EWC website:  
ewc.wy.edu/about-ewc/  
outreach/guernsey/  
—the fastest way to register!



Phone\*  
877.202.1020 or  
307.401.2081  
Call during office hours or leave a  
message with your name, contact  
information and class(es) you are  
interested in.

Mail\*  
Send your registration to EWC  
Guernsey Outreach, PO Box 189,  
Guernsey, WY 82214

Walk-in\*  
Guernsey-Sunrise High School.  
Drop off your registration form and  
payment.

## WHEATLAND OUTREACH

Online\*  
Tamara Stenson  
Wheatland Community Education  
tstenson@ewc.wy.edu

EWC website:  
ewc.wy.edu/about-ewc/outreach/  
wheatland/  
—the fastest way to register!

Phone\*  
307.322.2433  
Call during office hours or leave a  
message with your name, contact  
information and class(es) you are  
interested in.

Office Hours\*  
Hours - 7:30 a.m. - 4 p.m.

Walk-in\*  
Wheatland High School  
Peak High School Room 140  
Drop off your registration form and  
payment during office hours

EWC is accredited by the American  
Welding Society, the American Veterinary  
Medical Association, and the Accreditation  
Commission for Education in Nursing (ACEN)

The Higher Learning Commission of the  
North Central Association of Colleges &  
Schools  
230 South LaSalle Street, Suite 7-500  
Chicago, IL 60604  
Telephone: 800.621.7440/312.263.0456  
Fax: 312.263.7462  
info@hlcommission.org  
www.ncahlc.org

Eastern Wyoming College is  
an affirmative action/equal  
opportunity institution.

The information contained herein  
is valid as of August 2024. While  
EWC makes every effort to ensure  
the accuracy of the information,  
the college reserves the right to  
make changes at any time without  
prior notice. Always check with  
the appropriate office for current  
information.

The EWC Schedule summarizes  
information of interest to students;  
it is not a complete statement  
of programs and policies. Other  
important information is published  
in the EWC Catalog and on the EWC  
Website.

# Table of Contents

Scholarship Information .....2  
How to Register.....3  
Guernsey Community Ed Classes.4-5  
Wheatland Community Ed Classes6-7  
General Information .....8  
2024 Fall Semester Calendar .....8  
Fall Credit Classes ..... 9-12  
Registration Form..... 13  
Ed2Go ..... 14-15  
Ellbogen Opportunity Scholarship14-15

## Concurrent & Dual Information..... 16

“ Student success is our first priority;  
as a learning community we  
provide opportunities that enable  
students to achieve their goals and  
enrich our unique region through  
work, partnerships, and student  
achievement.

Eastern Wyoming  
College Mission



Eastern Wyoming College is dedicated to providing opportunities and recognizing the talent of all people within this institution. There is a commitment to a policy of equal employment opportunity for all persons on the basis of merit without regard to race, color, national origin, marital status, age, sexual orientation, sex, religion, political belief, veteran status or disability. In accordance with the policy, Eastern Wyoming College affirms its commitment to non-discrimination in its employment practices as they relate to recruitment, hiring, selection, screening, testing, compensation, promotion, employment benefits, educational opportunities, access to programs, work assignments, application of discipline, access to grievance procedures, and any and all other conditions of employment which are provided by Eastern Wyoming College policy, regulation, rule or practice. Inquiries concerning Title II, Title VI, Title VII, and Section 504, may be directed to the Director of Human Resources, 307.532.8330. Inquiries concerning Title IX may be directed to the Executive Dean of Student Services, 307.532.8257. Both may be reached at Eastern Wyoming College, 3200 West C Street, Torrington, WY 82240. Alternatively you may contact the Wyoming Department of Education, Office for Civil Rights Coordinator, 2300 Capitol Avenue, 2nd Floor, Cheyenne, WY 82002-0050 or 307.777.7675.



# Guernsey • Classes

Please call Lori Ibarra at 1-877-202-1020 or 307-401-2081 if you are interested in taking a class. Registration is required for all offerings. Classes run that are full. When necessary additional sessions of a class can be added.

Classes of interest may be added throughout the semester, so please watch for new offerings to be posted on the Guernsey-Sunrise Schools Facebook page or on the Tri-City Parks and Recreation District Facebook page or through emails.

## GUERNSEY OUTREACH

[ewc.wy.edu/guernsey](http://ewc.wy.edu/guernsey)



**Lori Ibarra**  
Guernsey-Sunrise  
Community Ed Coordinator  
[libarra@ewc.wy.edu](mailto:libarra@ewc.wy.edu)



Guernsey-Sunrise High School  
172 W. Burlington, Room 218  
1.877.202.1020 or 307.401.2081  
[libarra@gsviking.org](mailto:libarra@gsviking.org)

Registrations must be completed and turned in at least 2 days prior to class offerings. Classes will not be held if there are no registrations received.

If you have talents to share or if you have any class requests let Lori know. Your input is invaluable, and I look forward to hearing from you! Call Lori with any questions.

## CLASSES FOR ADULTS

### WOOD BARN QUILT WITH GRETCHEN BORDERS

Gretchen will share her love of crafting, offering the opportunity for you to create your own Barn Quilt. Make the "Wyoming Valley" pattern in your choice of colors. It will be a work of art that you will be proud to display or give as a gift. Register early to secure your spot!

**Date: September 18, 2024**

**Time: 6 PM**  
**Location: G-S High School Library**  
**Cost: \$45**



### CHARCUTERIE CUISINE NIGHTS LIKE THIS ARE THE REASON WE'RE FRIENDS!

**When: Thursday, October 10, 2024**

**Time: 6 p.m.**

**Where: G-S FCS Kitchen**

**Cost: \$25**

**Fun Fact:** Charcuterie originates back to 15th century France. Translated, the French word charcuterie means "the products of a fancy pork butcher." Over the past few years, the trend from mostly meats has shifted to include nearly any kind of finger food you can assemble on a board. Together we will whip up a traditional board and individual charcuterie cups with a variety of meats, cheeses, spreads, crackers, fruit, veggies, olives and nuts. Register to join us, we will share some holiday drinks and enjoy the scrumptious boards and cups we create! Practice making salami/pepperoni roses and go home with not only great ideas for your holiday gatherings, you will take home your own board!

### RUSTIC WOODEN REINDEER Adult Winter Craft

Join me at the high school library and create your own reindeer décor. You will paint the wooden block, wooden circle and paint on your reindeer's eyes. Personalize with your choice of ribbons and fabric. All supplies will be provided.

**When: November 20, 2024**

**Where: G-S High School Library**

**Time: 6 p.m.**

**Cost: \$10**



### PAINT PARTY

I have all the supplies needed to host a paint party. Call or stop by to choose a pattern and we can set up a date for your party!

**Cost is \$15-\$25/person** depending on how many participants and the pattern you choose. Let's paint!





# Guernsey • Classes

## COMMUNITY CLASSES

### HOLIDAY HOME TOURS

**Sunday, December 8, 2024 at 2 PM**

You won't want to miss out on visiting these beautiful holiday homes. Homes in Guernsey and Hartville will be on the tour map. Purchase tickets, view the list and pick up the tour map and brochure at the **Holiday Bazaar on November 16th**. Our homeowners can't wait to share their festive homes!

### ANNUAL HOLIDAY BAZAAR

**When: Saturday, November 16, 2024**

**Time: 9 am – 2 pm**

Come one, Come ALL! Enjoy this kick-off to your holiday shopping season at the Guernsey-Sunrise High School East Gym and Common's Area. If you are a crafter, we would love to have you join us. If you are a shopper, we will have so many things local to choose from that you will have a hard time deciding what to buy!

### PARADE OF TREES

**Wednesday, December 4th** we will hold our

annual Parade of Trees event in conjunction with the community Winter's Eve Celebrations. There will be food, fun and great festivities to kick off the holiday season! Bring the kids and they can take their picture with Santa! Pictures are free!! Come on out and consider supporting our classrooms and school groups/organizations by purchasing their trees and wreaths in the silent auction. Your support is greatly appreciated!



## CLASSES FOR KIDS

In celebration of National Play-Doh Day, all students Pre K – 6th grade will receive Play-Doh with a variety of activities and games to play, as well as a recipe for the BEST Playdough, on **Monday, September 16th!** If your child is homeschooled, please submit their names and grade to Lori and she will see that they receive their Play-Doh.



### Halloween Wood Block Craft

**Who: K-6th grade**

Choose your design and create your spooky shelf sitter! All supplies provided. Students must be registered prior to craft class.

**When: October 25, 2024**

**Time: 1:30 – 2:15 p.m.**

**Where: GS HS Library**

**Cost: \$5**

### BUTTONS, BUTTONS, BUTTONS

**Who: Students Grades 4-12**

**When: November 7, 2024, 3:30-4:15 p.m.**

**Where: GS HS**

**Library**

**Cost: \$5**

Let's make a Fall Button Bouquet in a salt shaker. Take it home to display or give to someone you love!



## CHRISTMAS ORNAMENT CLASS

This annual offering is free to all students. Older students are welcome to come and help the younger kids! Everyone will make snowflakes and snowmen to take home. Students must be registered to attend and join us as we continue this tradition! Volunteers are always welcome.



**When: Friday, December 20, 2024**  
**Time: 1:30-2:15 p.m.**  
**Where: GS Multipurpose Room**  
**Cost: FREE**



[ewc.wy.edu](http://ewc.wy.edu)



# Wheatland • Classes

Please call Tamara Stenson 307-322-2433 if you are interested in taking a class. Registration is required for all offerings. Classes run that are full. When necessary additional sessions of a class can be added.

Classes of interest may be added throughout the semester, so please watch for new offerings to be posted.

## WHEATLAND OUTREACH

[ewc.wy.edu/wheatland](http://ewc.wy.edu/wheatland)



**Tamara Stenson**  
PCSD #1 Community Ed  
Coordinator  
[tstenson@ewc.wy.edu](mailto:tstenson@ewc.wy.edu)



## HIGH SCHOOL EQUIVALENCY

This course is taught by Jeff Wilhelm, and it is designed to assist students who want to earn their high school equivalency certification. The final exam in the course is administered online through HiSET ([hiset.org](http://hiset.org)).

There are five parts including Language Arts Reading, Language Arts Writing, Mathematics, Science, and Social Studies. The cost to the student is \$53.75 for the five assessments with two free retakes for each one. The cost of the class is covered via grant funds secured by the College and Career Readiness Center of Eastern Wyoming College.

Classes meet on Tuesday and Thursday afternoons from 1:30 to 3:30, and from 6:00 to 8:00 on Wednesday evenings. The classroom is located on the Wheatland High School campus, Room 140. The address is 1207 12th Street.



## AMERICAN HEART ASSOCIATION HEALTHY FOR LIFE

Is an evidence-based community nutrition and well-being program that empowers people to make healthy foods, nutrition, and lifestyle choices. This 4-week class will cover great information from the Healthy Heart Association and we will cook as we learn.

**Date:** TBA  
**Time:** TBA  
**Cost:** TBA  
**Location:** TBA



## AMERICAN HEART ASSOCIATION: HEART SAVER FIRST AID, CPR, AED

This class is for those who need their certification or renewal. This class is instructor led with hands on learning. You'll use a manikin to demonstrate your knowledge of First AID, CPR and AED. Passing test scores is required for certification. Certification is good for 2 years. Certification requires renewal every 2 years.

**Date:** TBA  
**Time:** TBA  
**Cost:** TBA  
**Location:** TBA

## CNA-CERTIFIED NURSING ASSISTANT

This course is taught by Gwen Yung. If you're looking for a career in the medical field this is an opportunity for you to become a certified CNA. Platte County needs CNA's. This course is 8 weeks. A textbook and workbook are required to purchase for this class.

Successful completion of Clinicals and passing scores on the skills and written tests are required for state licensing.

**Date:** TBA  
**Time:** TBA  
**Cost:** TBA  
**Location:** TBA



## DRIVERS EDUCATION



This course teaches Drivers Education and traffic safety according to Wyoming Laws. The course requires 30 hours of classroom instruction and 6 hours of driving time behind the wheel. Students are required to keep record of 50 hours of parent supervised driving in order to get their Driver's License. Parents may be eligible for insurance

# Wheatland • Classes

discounts for your child completing Drivers Education. Please check with your Insurance Company.

**Date: TBA**

**Time: TBA**

**Cost: TBA**

**Location: TBA**

## HUNTER SAFETY EDUCATION



This course meets the requirements for Hunters by the Wyoming Game and Fish. This course covers proper handling of rifles, shotguns, handguns and care in the field, community and home. Students under the age of 12 must be accompanied by an adult. Class size is limited.

**Date: TBA**

**Time: TBA**

**Cost: TBA**

**Location: TBA**

## INSTANT POT

Have you wondered about Instant Pot cooking? Have you wondered if they are worth the hype? Join Mary Evans with Platte County Extension as we explore Electric Pressure cooking. This class will last 2 hours. Supplies are included in the cost. We will prepare and then have a feast of flavors.

**Date: TBA**

**Time: TBA**

**Cost: TBA**

**Location: TBA**

## MAY DAY BASKETS

This class is taught by **Tamara Stenson**. Students will make May Day Baskets to give to community members. Students will make a May Day basket for themselves to take home.

**Date: TBA**

**Time: TBA**

**Cost: TBA**

**Location: TBA**

## SUSHI

Don't be overwhelmed at the thought of ordering Sushi or for that matter eating raw sushi, there are many different types of Sushi including cooked. In this 2-hour class we will talk about the different kinds of Sushi and make a few of our own.

**Date: TBA**

**Time: TBA**

**Cost: TBA**

**Location: TBA**



## WYOMING SUBSTITUTE TEACHING PERMIT CLASS



This class is taught by Tamara Stenson. If you want to become a Substitute Teacher in the State of Wyoming this class will assist with the process of how to earn your Substitute Teacher Permit.

**Date: TBA**

**Time: TBA**

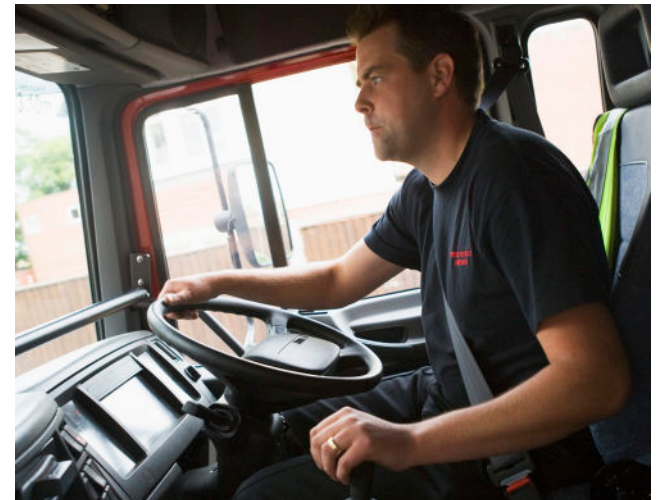
**Cost: TBA**

**Location: TBA**

## POSSIBLE ADDITIONAL COMMUNITY EDUCATION OFFERINGS

### ADULT PAINTING

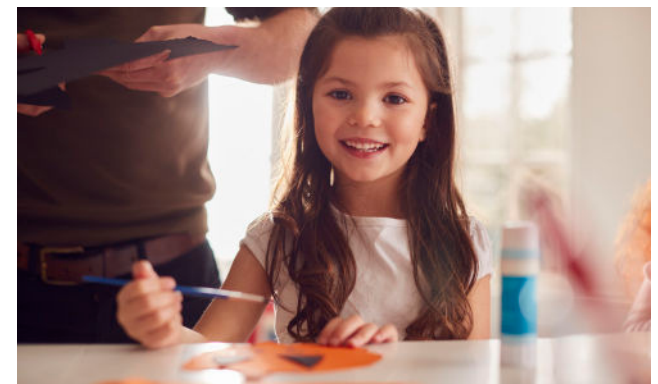
### CDL – COMMERCIAL DRIVER LICENSE



### HALLOWEEN CARNIVAL

### KIDS CHRISTMAS CRAFT

### KIDS PAINTING



Platte County Community Education is looking for community members to teach classes. If you're interested in teaching a class through Community Education please contact Tamara Stenson, the Community Education Coordinator for PCSD #1.



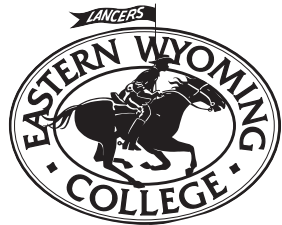
# EWC General Information

## Financial Aid

For specific financial aid information, please call the Financial Aid Office at 307.532.8224 or 866.327.8996. You may also obtain financial aid information from EWC's website, [ewc.wy.edu](http://ewc.wy.edu). For information about veterans educational benefits, please contact the VA Certifying Official at 307.532.8224.

## Payment Options

Payment for tuition and fees can be made online through your student account on MyEWC, by check, or by phone using a credit/debit card by calling the EWC Business Office at 307.532.8205. If you are paying by credit/debit card, you may use Visa, MasterCard, or Discover. All tuition and fees must be paid in full at the beginning of each semester and before the student attends classes. All checks should be made payable to Eastern Wyoming College. Payment plans may be available from the EWC Business Office for those students who qualify. Failure to pay tuition and fees, or have an approved payment plan in place before the student attends classes may result in a late payment charge. Please contact the Director of Community Ed for additional information.



## Fall 2024 Semester Calendar

*The EWC Administration reserves the right to make changes without notice.*

**August 21 (Wednesday)** – Residence Halls Open at 9 am

**August 22 (Thursday)** – Residence Halls Open at 9 am

**August 22 (Thursday)** – New Admissions Close at 4 pm

**August 22 (Thursday)** – Douglas Campus New Student Orientation at 10 am

**August 23 (Friday)** – Torrington Campus New Student Orientation at 9 am

**August 26 (Monday)** – Regular Semester and Block A Classes Begin

**August 29 (Thursday)** – Last Day to Add Block A (8 week) Classes at 4 pm / Last Day to Drop Block A (8 week) Classes for 100% Tuition and Fee Refund at 4 pm.

**September 2 (Monday)** – Labor Day / No Classes / Campus Closed

**September 3 (Tuesday)** – Last Day to Drop Block A (8 week) Classes for 100% Tuition Refund Only at 4 pm.

**September 9 (Monday)** – Last Day to Drop Regular Semester (16 week) Classes for 100% Tuition Refund Only at 4 pm.

**September 11 (Wednesday)** – First Scheduled Financial Aid Disbursement to Students' Accounts (Additional disbursements are scheduled each week on Tuesdays except when there is a holiday or break.)

**October 4 (Friday)** – Last Day to Withdraw from Block A (8 week) Classes at 4 pm / No Tuition or Fee Refund

**October 11 (Friday)** – Midterm / End of Block A (8 week) Classes

**October 14 (Monday)** – Block B (8 week) Classes Begin

**October 17 (Thursday)** – Fall Break / No Classes

**October 18 (Friday)** – Fall Break / No Classes

**October 21 (Monday)** – Classes Resume / Last Day to Add Block B (8 week) Classes at 4 pm / Last Day to Drop Block B (8 week) Classes for 100% Tuition and Fee Refund at 4 pm.

**October 22 (Tuesday)** – Last Day to Drop Block B (8 week) Classes for 100% Tuition Only Refund at 4 pm.

**November 7 (Thursday)** – Registration for Spring 2025 Semester Opens for Sophomores

**November 11 (Monday)** – Registration for Spring 2025 Semester Opens for All Students

**November 22 (Friday)** – Last Day to Withdraw from Regular Semester (16 week) Classes at 4 pm / No Tuition or Fee Refund

**November 27 (Wednesday)** – Thanksgiving Break / No Classes / Campus Closed

**November 28 (Thursday)** – Thanksgiving Break / No Classes / Campus Closed

**November 29 (Friday)** – Thanksgiving Break / No Classes / Campus Closed

**December 2 (Monday)** – Classes Resume

**December 5 (Thursday)** – Last Day to Withdraw from Block B (8 week) Classes at 4 pm / No Tuition or Fee Refund

**December 9 (Monday)** – Finals Week Begins

**December 12 (Thursday)** – End of Semester

**December 14 (Saturday)** – Residence Halls Close at Noon

## Placement Exams

(Accuplacer): Students who plan to enroll in a lab science, math and/or an English class will need to take the Accuplacer placement exam if they haven't met ACT or prerequisite requirements for the class. Call your Outreach Coordinator to schedule a time to take the exam. The cost to take the exam is \$20. You may pay this fee online at [ewc.wy.edu/testing/accuplacer-placement-testing](http://ewc.wy.edu/testing/accuplacer-placement-testing) (Or bring a check or money order).

## Refunds

Tuition and Activity & Use/Technology Fees are refunded on a course-by-course basis, and are determined by the length of the course and the first meeting day of the course.

Tuition: For courses which meet the full (16 week) semester, tuition is refunded in full for 8 calendar days beginning with the first day of the class. Thereafter, there is no refund of tuition. For courses which are offered for less than a full (16 week) semester, the tuition refund will be prorated.

Activity & Use/Technology Fees: For courses which meet the full (16 week) semester, activity and use/technology fees are refunded in full for 14 calendar days beginning with the first day of the class. For courses which are offered for less than a full (16 week) semester, the activity & use/technology fees refund will be prorated.

## Tuition & Fees

Below is a table with the tuition & fees (also available on-line). Outreach activity, use, and technology fees are \$16 per credit hour. Some courses also have course fees. Please see the college catalog for a complete listing of fees. Online course fee is \$25 per class, additional fees may apply.

Credit Hours	Outreach Activities & Use Fees	Technology Fee	In-State Tuition	Total Outreach Tuition/Fees
1	\$8	\$8	\$105	\$121
2	\$16	\$16	\$210	\$242
3	\$24	\$24	\$315	\$363
4	\$32	\$32	\$420	\$484
5	\$40	\$40	\$525	\$605
6	\$48	\$48	\$630	\$726
7	\$56	\$56	\$735	\$847
8	\$64	\$64	\$840	\$968
9	\$72	\$72	\$945	\$1,089
10	\$80	\$80	\$1,050	\$1,210
11	\$88	\$88	\$1,155	\$1,331
12	\$96	\$96	\$1,260	\$1,452
13	\$104	\$104	\$1,365	\$1,573
14	\$112	\$112	\$1,470	\$1,694
15	\$120	\$120	\$1,575	\$1,815
16	\$128	\$128	\$1,680	\$1,936
17+	\$120	\$120	\$1,485	\$1,725



**CHARGE** into Your Future  
[ewc.wy.edu](http://ewc.wy.edu)



# EWC FALL 2024 Online Classes start August 26

## ACCT Accounting-Business

Max	Course	Number	Sec	Title	Hrs	Fee	Bldg	Rm	Act		Days	Time	Faculty	Begin Date	End Date
20	ACCT	2020	40	Principles of Accounting II	3.0	\$25.00			OLEC	NETA		Online		8/26/2024	12/12/2024

## AECL Agroecology

Max	Course	Number	Sec	Title	Hrs	Fee	Bldg	Rm	Act		Days	Time	Faculty	Begin Date	End Date
20	AECL	1000	40	Agroecology	4.0	\$50.00			OLEC	NETA		Online		8/26/2024	12/12/2024
20	AECL	L001	40	AECL 1000 Lab	0.0				OLAB	NETA		Online		8/26/2024	12/12/2024

## AGEC Agricultural Economics

Max	Course	Number	Sec	Title	Hrs	Fee	Bldg	Rm	Act		Days	Time	Faculty	Begin Date	End Date
24	AGEC	1010	40	Agricultural Macroeconomics	3.0	\$25.00			OLEC	NETA		Online		8/26/2024	12/12/2024
10	AGEC	1970	40	Internship	2.0	\$25.00			OLAB	NETA		Online	M. Stokes	8/26/2024	12/12/2024
20	AGEC	2395	40	Ag Econ Capstone Experience	2.0	\$25.00			OLAL	NETA		Online	G. Younglove	8/26/2024	12/12/2024

## AGRI Agriculture

Max	Course	Number	Sec	Title	Hrs	Fee	Bldg	Rm	Act		Days	Time	Faculty	Begin Date	End Date
20	AGRI	1010	40	Computer Technology in Ag	3.0	\$25.00			OLAL	NETA		Online	G. Younglove	8/26/2024	12/12/2024

## ART Art

Max	Course	Number	Sec	Title	Hrs	Fee	Bldg	Rm	Act		Days	Time	Faculty	Begin Date	End Date
20	ART	1010	40	Intro to Art	3.0	\$25.00			OLAL	NETA		Online	R. Clause	8/26/2024	12/12/2024
20	ART	2010	40	Art History I	3.0	\$25.00			OLEC	NETA		Online	R. Clause	8/26/2024	12/12/2024

## BADM Business Administration

Max	Course	Number	Sec	Title	Hrs	Fee	Bldg	Rm	Act		Days	Time	Faculty	Begin Date	End Date
20	BADM	1005	40	Business Mathematics	3.0	\$25.00			OLEC	NETA		Online	K. Farley	8/26/2024	12/12/2024
20	BADM	1395	40	Business Administration Capstone	3.0	\$25.00			OLEC	NETA		Online		8/26/2024	12/12/2024

## BIOL Biology

Max	Course	Number	Sec	Title	Hrs	Fee	Bldg	Rm	Act		Days	Time	Faculty	Begin Date	End Date
20	BIOL	1000	40	Principles of Biology	4.0	\$25.00			OLEC	NETA		Online	C. Wenzel	8/26/2024	12/12/2024
20	BIOL	L004	40	BIOL 1000 Lab	0.0				OLAB	NETA		Online	C. Wenzel	8/26/2024	12/12/2024
20	BIOL	1009	40	Critical Science Skills	1.0	\$25.00			OLEC	NETA		Online	C. Wenzel	8/26/2024	12/12/2024
20	BIOL	1010	40	General Biology I	4.0	\$25.00			OLEC	NETA		Online	M. Steward	8/26/2024	12/12/2024
20	BIOL	L001	40	BIOL 1010 Lab	0.0				OLAB	NETA		Online	M. Steward	8/26/2024	12/12/2024
20	BIOL	2400	40	General Ecology	3.0	\$25.00			OLEC	NETA		Online	C. Wenzel	8/26/2024	12/12/2024
20	BIOL	2410	40	Intro to Field Ecology	2.0	\$25.00			OLEC	NETA		Online	C. Wenzel	8/26/2024	12/12/2024

## COMM Communication/Mass Media

Max	Course	Number	Sec	Title	Hrs	Fee	Bldg	Rm	Act		Days	Time	Faculty	Begin Date	End Date
20	COMM	1000	40	Intro to Mass Media	3.0	\$25.00			OLEC	NETA		Online	E. Koc	8/26/2024	12/12/2024
20	COMM	1030	40	Interpersonal Communication	3.0	\$25.00			OLEC	NETA		Online	E. Koc	8/26/2024	12/12/2024
20	COMM	2010	40	Public Speaking	3.0	\$25.00			OLEC	NETA		Online	E. Koc	8/26/2024	12/12/2024

## CRMJ Criminal Justice

Max	Course	Number	Sec	Title	Hrs	Fee	Bldg	Rm	Act		Days	Time	Faculty	Begin Date	End Date
20	CRMJ	1001	40	Intro to Criminal Justice	3.0	\$25.00			OLEC	NETA		Online	L. Curtis	8/26/2024	12/12/2024
20	CRMJ	1010	40	Current Issues in Criminal Justice	3.0	\$25.00			OLEC	NETA		Online	R. Cornish	8/26/2024	12/12/2024



## CRMJ Criminal Justice

20	CRMJ	2020	40	Fundamentals of Leadership	3.0	\$25.00			OLEC	NETA		Online	R. Cornish	8/26/2024	12/12/2024
20	CRMJ	2280	40	Criminal Procedures	3.0	\$25.00			OLEC	NETA		Online	R. Cornish	8/26/2024	12/12/2024
20	CRMJ	2350	40	Intro to Corrections	3.0	\$25.00			OLEC	NETA		Online	R. Cornish	8/26/2024	12/12/2024
20	CRMJ	2400	40	Criminology	3.0	\$25.00			OLEC	NETA		Online	R. Cornish	8/26/2024	12/12/2024
10	CRMJ	2395	40	Criminal Justice Capstone Project	1.0	\$25.00			OLEC	NETA		Online	R. Cornish	8/26/2024	12/12/2024
10	CRMJ	2470	40	Internship	2.0	\$25.00			OIND	NETA		Online	L. Curtis	8/26/2024	12/12/2024

## ECON Economics

Max	Course	Number	Sec	Title	Hrs	Fee	Bldg	Rm	Act		Days	Time	Faculty	Begin Date	End Date
24	ECON	1010	40	Macroeconomics	3.0	\$25.00			OLEC	NETA		Online		8/26/2024	12/12/2024

## EDEC Educ-Early Childhood

Max	Course	Number	Sec	Title	Hrs	Fee	Bldg	Rm	Act		Days	Time	Faculty	Begin Date	End Date
20	EDEC	1020	40	Intro to Early Childhood Ed	3.0	\$25.00			OLEC	NETA		Online	L. Smith	8/26/2024	12/12/2024
20	EDEC	1100	40	Observ&Guidance of Yng Chldrn	2.0	\$25.00			OLEC	NETA		Online		8/26/2024	12/12/2024
20	EDEC	1105	40	Observ&Guid of Yng Chldrn Lab	1.0	\$25.00			OLEC	NETA		Online		8/26/2024	12/12/2024
20	EDEC	2000	40	Engaging Families/Childhood	3.0	\$25.00			OLEC	NETA		Online		8/26/2024	12/12/2024

## EDEL Education-Elementary

Max	Course	Number	Sec	Title	Hrs	Fee	Bldg	Rm	Act		Days	Time	Faculty	Begin Date	End Date
20	EDEL	2280	40	Literature for Children	3.0	\$25.00			OLEC	NETA		Online		8/26/2024	12/12/2024

## EDUC Education

Max	Course	Number	Sec	Title	Hrs	Fee	Bldg	Rm	Act		Days	Time	Faculty	Begin Date	End Date
99	EDUC	0010	40	Pre-Screen for Pract in Teach	0.0	\$95.00			OLEC	NS		TBA	L. Smith	8/26/2024	12/12/2024
20	EDUC	1501	40	Effective Substitute Teaching	3.0	\$25.00			OLAL	NETA		Online	L. Smith	8/26/2024	12/12/2024
20	EDUC	2100	40	Practicum In Teaching	3.0	\$50.00			OLAL	NETA		Online	L. Smith	8/26/2024	12/12/2024

## ENGL English

Max	Course	Number	Sec	Title	Hrs	Fee	Bldg	Rm	Act		Days	Time	Faculty	Begin Date	End Date
20	ENGL	1005	40	Applied Technical Writing	3.0	\$25.00			OLEC	NETA		Online		8/26/2024	12/12/2024
20	ENGL	1009	40	Co-Requisite for ENGL 1010	2.0	\$25.00			OLEC	NETA		Online	K. Strampe	8/26/2024	12/12/2024
20	ENGL	1010	40	English I:Composition	3.0	\$25.00			OLEC	NETA		Online	K. Strampe	8/26/2024	12/12/2024
20	ENGL	1010	41	English I:Composition	3.0	\$25.00			OLEC	NETA		Online		8/26/2024	12/12/2024
20	ENGL	1010	42	English I:Composition	3.0	\$25.00			OLEC	NETA		Online		8/26/2024	12/12/2024
20	ENGL	2020	40	Literature, Media, and Culture	3.0	\$25.00			OLEC	NETA		Online	K. Strampe	8/26/2024	12/12/2024

## FCSC Family & Consumer Science

Max	Course	Number	Sec	Title	Hrs	Fee	Bldg	Rm	Act		Days	Time	Faculty	Begin Date	End Date
20	FCSC	1141	40	Principles of Nutrition	3.0	\$25.00			OLEC	NETA		Online	J. Ostrander	8/26/2024	12/12/2024

## FIN Finance

Max	Course	Number	Sec	Title	Hrs	Fee	Bldg	Rm	Act		Days	Time	Faculty	Begin Date	End Date
20	FIN	1000	40	Personal Finance	3.0	\$25.00			OLEC	NETA		Online		8/26/2024	12/12/2024

## HIST History

Max	Course	Number	Sec	Title	Hrs	Fee	Bldg	Rm	Act		Days	Time	Faculty	Begin Date	End Date
20	HIST	1221	40	U.S. from 1865	3.0	\$25.00			OLEC	NETA		Online	H. Gorman	8/26/2024	12/12/2024



## HLTK Health Technology

Max	Course	Number	Sec	Title	Hrs	Fee	Bldg	Rm	Act		Days	Time	Faculty	Begin Date	End Date
20	HLTK	1200	40	Medical Terminology	3.0	\$25.00			OLEC	NETA		Online	J. Ostrander	8/26/2024	12/12/2024

## HMDV Human Development

Max	Course	Number	Sec	Title	Hrs	Fee	Bldg	Rm	Act		Days	Time	Faculty	Begin Date	End Date
24	HMDV	1000	40	College Studies	1.0	\$25.00			OLEC	NETA		Online	R. Breedlove	8/26/2024	10/11/2024
24	HMDV	1000	41	College Studies	1.0	\$25.00			OLEC	NETA		Online		10/14/2024	12/12/2024
24	HMDV	1050	40	Study Strategies	2.0	\$25.00			OLEC	NETA		Online	D. Banville	10/14/2024	12/12/2024

## HMSV Human Services

Max	Course	Number	Sec	Title	Hrs	Fee	Bldg	Rm	Act		Days	Time	Faculty	Begin Date	End Date
99	HMSV	0010	40	Prescreen for Field Exp in Human Services	0.0	\$95.00			LEC	NS		TBA		8/26/2024	12/12/2024
20	HMSV	1010	40	Orientation to Human Services	3.0	\$25.00			OLEC	NETA		Online		8/26/2024	12/12/2024
20	HMSV	1460	40	Field Experience in Human Services	3.0	\$25.00			OLEC	NETA		Online		8/26/2024	12/12/2024

## LIBS Library Science-Educ.

Max	Course	Number	Sec	Title	Hrs	Fee	Bldg	Rm	Act		Days	Time	Faculty	Begin Date	End Date
20	LIBS	1000	40	Library Research Methods	1.0	\$25.00			OLEC	NETA		Online	C. Debus	10/14/2024	12/12/2024

## MATH Mathematics

Max	Course	Number	Sec	Title	Hrs	Fee	Bldg	Rm	Act		Days	Time	Faculty	Begin Date	End Date
10	MATH	0950	40	Preparation for College Mathematics	1.0	\$25.00			OLEC	NETA		Online	J. Clark	8/26/2024	12/12/2024
10	MATH	0950	41	Preparation for College Mathematics	2.0	\$25.00			OLEC	NETA		Online	J. Clark	8/26/2024	12/12/2024
10	MATH	0950	42	Preparation for College Mathematics	3.0	\$25.00			OLEC	NETA		Online	J. Clark	8/26/2024	12/12/2024
20	MATH	1100	40	Number and Operations for Elem Sch Tchrs	3.0	\$25.00			OLEC	NETA		Online	L. Krakow	8/26/2024	12/12/2024
20	MATH	1400	40	College Algebra	4.0	\$25.00			OLEC	NETA		Online	S. Warren	8/26/2024	12/12/2024
10	MATH	1409	40	College Algebra Workshop	1.0	\$25.00			OLAB	NETA		Online	S. Warren	8/26/2024	12/12/2024
20	MATH	2350	40	Business Calculus	4.0	\$25.00			OLEC	NETA		Online	A. Lincowski	8/26/2024	12/12/2024

## MGT - Management

Max	Course	Number	Sec	Title	Hrs	Fee	Bldg	Rm	Act		Days	Time	Faculty	Begin Date	End Date
20	MGT	2020	40	Fundamentals of Leadership	3.0	\$25.00			OLEC	NETA		Online	R. Cornish	8/26/2024	12/12/2024

## MKT Marketing

Max	Course	Number	Sec	Title	Hrs	Fee	Bldg	Rm	Act		Days	Time	Faculty	Begin Date	End Date
20	MKT	2100	40	Principles of Marketing	3.0	\$25.00			OLEC	NETA		Online		8/26/2024	12/12/2024

## PEAC Activity-Phys & Hlth Edu

Max	Course	Number	Sec	Title	Hrs	Fee	Bldg	Rm	Act		Days	Time	Faculty	Begin Date	End Date
20	PEAC	1001	40	Health and Wellness	1.0	\$25.00			OLAL	NETA		Online	G. Hamilton	10/14/2024	12/12/2024

## PEPR Physical Education Professional-Physical & Health

Max	Course	Number	Sec	Title	Hrs	Fee	Bldg	Rm	Act		Days	Time	Faculty	Begin Date	End Date
20	PEPR	2091	40	Sports Officiating	2.0	\$25.00			OLAL	NETA		Online	G. Hamilton	8/26/2024	12/12/2024

## POLS Political Science

Max	Course	Number	Sec	Title	Hrs	Fee	Bldg	Rm	Act		Days	Time	Faculty	Begin Date	End Date
24	POLS	1000	40	American & Wyoming Government	3.0	\$25.00			OLEC	NETA		Online	E. Creagar	8/26/2024	12/12/2024
24	POLS	1000	41	American & Wyoming Government	3.0	\$25.00			OLEC	NETA		Online	E. Creagar	8/26/2024	12/12/2024



## POLS Political Science

24	POLS	1000	42	American & Wyoming Government	3.0	\$25.00			OLEC	NETA		Online	E. Creagar	8/26/2024	12/12/2024
12	POLS	1100	40	Wyoming Government	1.0	\$25.00			OLEC	NETA		Online	E. Creagar	8/26/2024	12/12/2024

## PSYC Psychology

Max	Course	Number	Sec	Title	Hrs	Fee	Bldg	Rm	Act		Days	Time	Faculty	Begin Date	End Date
20	PSYC	1000	40	General Psychology	3.0				OLEC	NETA		Online	J. Hart	8/26/2024	12/12/2024
20	PSYC	2080	40	Biological Psychology	3.0				OLEC	NETA		Online	J. Hart	8/26/2024	12/12/2024

## SOC Sociology

Max	Course	Number	Sec	Title	Hrs	Fee	Bldg	Rm	Act		Days	Time	Faculty	Begin Date	End Date
20	SOC	1000	40	Sociological Principles	3.0	\$25.00			OLEC	NETA		Online	R. Cornish?	8/26/2024	12/12/2024
20	SOC	2200	40	Sociology of Human Sexuality	3.0	\$25.00			OLEC	NETA		Online	J. Hart	8/26/2024	12/12/2024
20	SOC	2400	40	Criminology	3.0	\$25.00			OLEC	NETA		Online	R. Cornish	8/26/2024	12/12/2024

## SOSC Social Science

Max	Course	Number	Sec	Title	Hrs	Fee	Bldg	Rm	Act		Days	Time	Faculty	Begin Date	End Date
20	SOSC	2395	40	Social Science Capstone Exper	1.0	\$25.00			OLEC	NETA		Online	J. Hart	8/26/2024	12/12/2024

## STAT Statistics

Max	Course	Number	Sec	Title	Hrs	Fee	Bldg	Rm	Act		Days	Time	Faculty	Begin Date	End Date
20	STAT	2070	40	Introductory Statistics for the Social Science	4.0	\$25.00			OLEC	NETA		Online	J. Hart	8/26/2024	12/12/2024

## ZOO Zoology

Max	Course	Number	Sec	Title	Hrs	Fee	Bldg	Rm	Act		Days	Time	Faculty	Begin Date	End Date
20	ZOO	1200	40	Human Biology	3.0	\$25.00			OLEC	NETA		Online	J. Ostrander	8/26/2024	12/12/2024

# Charge into Your Future



**Small Class Sizes - Affordable - Family Atmosphere**

**Register Now**

**[ewc.wy.edu](http://ewc.wy.edu)**

**307-532-8200**





LEGAL NAME – Last	First	M.I.	SS#
Date of Birth	E-mail		Name of Business
Mailing Address	City	State	Zip County
Are you Hispanic or Latino? Yes/No (Check all that apply)			Cell ( )
<input type="checkbox"/> American Indian/Alaskan Native <input type="checkbox"/> Asian <input type="checkbox"/> Black/African American <input type="checkbox"/> Native Hawaiian or Other Pacific Islander <input type="checkbox"/> White/Caucasian			Home ( )
			Gender Male <input type="checkbox"/> Female <input type="checkbox"/>

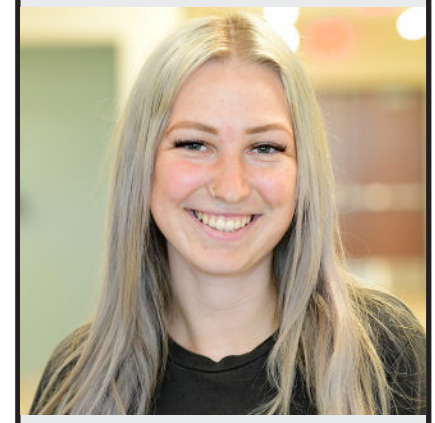
NAME OF ACTIVITY	COST	BEG. DATE	TIME	LOCATION

Total Due at Registration	
---------------------------	--

I, on behalf of myself or my child/ward, do hereby agree that "EWC" program, it's agents, representatives, successors, assignees, all instructors, coaches, managers, umpires, referees, their assistants or anyone who prepares the playing courts, SHALL NOT be liable for the injury or death of any participant in the "EWC" program which results from the individual's participation in the program. We strongly urge each participant to make sure he/ she or their child/ward is covered by their own personal insurance before enrollment in this program.

Signed: \_\_\_\_\_ Date \_\_\_\_\_

# CHARGE into Your Future in Welding



● "I came to EWC from Cumberland, Wisconsin to study welding. I really like it here. It is a lot of fun and you learn a lot. The teachers are always willing to help!"  
Inari Johnson



**ewc.wy.**  
**308-532-8200**



## COMMUNITY EDUCATION/WORKFORCE DEVELOPMENT POLICIES

**REGISTRATION DEADLINE:** Unless otherwise noted, registration is ongoing until the class fills or begins. Class sizes are limited and registration is first-come, first-served. Registrations are not complete until payment is received.

**CANCELLATIONS:** Occasionally classes are cancelled due to insufficient registration or unforeseen circumstances. All fees will be refunded if Eastern Wyoming College cancels the class. Typically, the decision to cancel a class is made two days prior to the start of class, so register early to prevent cancellations.

**REFUND POLICY:** If you want to cancel your registration, notification is required at least two business days prior to the start of class or the registration deadline, whichever is sooner. Failure to attend is NOT a cancellation.

**INCLEMENT WEATHER:** In the event of inclement weather, call Eastern Wyoming College

Eastern Wyoming College is an Equal Opportunity / Affirmative Action Institution

<b>HOW DID YOU HEAR ABOUT THIS CLASS/TRIP?</b> <input type="checkbox"/> Community Education Brochure <input type="checkbox"/> Radio Program <input type="checkbox"/> Newspaper <input type="checkbox"/> EWC Website	<input type="checkbox"/> Friend <input type="checkbox"/> Direct Mail <input type="checkbox"/> Personal Contact <input type="checkbox"/> Other _____	<b>WHY ARE YOU ATTENDING THIS ACTIVITY?</b> <input type="checkbox"/> Certification/Testing <input type="checkbox"/> Improve job skills <input type="checkbox"/> Personal enrichment <input type="checkbox"/> Other _____
---	--	--

OFFICE USE ONLY				
Roster		Received by		Credit Card
Deposit		Receipt #		FTS
Session		Cash		Other
Refund		Check		Direct Bill





# Ellbogen Opportunity Scholarship

## Eligible Eastern Wyoming College programs include:

- **Agriculture**
- **Beef Production - Certificate**
- **Business Administration - AAS (includes distance learning option)**
- **Certified Nursing Assistant**
- **Child Development - Certificate (includes distance learning option)**
- **Corrections - Certificate (includes distance learning option)**
- **Cosmetology**
- **Criminal Justice - AAS**
- **Farm and Ranch Management**
- **Gunsmithing - AAS**
- **Human Services - AA**
- **Machine Tool Technology - Certificate**
- **Nursing - ADN**
- **Precision Agriculture - AAS**
- **Precision Agriculture - Certificate**
- **Veterinary Aide - Certificate**
- **Veterinary Technology - AAS**
- **Welding and Joining - AAS**
- **Welding and Joining - Certificate**
- **Welding and Joining Specialist - Certificate**

**ewc.wy.edu**  
**307-532-8200**

see more, page 9

## EXPAND YOUR OFFERINGS WITH ONLINE COURSES THAT LEAD TO INDUSTRY-RECOGNIZED CERTIFICATIONS

Many business sectors have developed industry-recognized certifications to ensure their workforce is equipped with adequate skills and specialized knowledge. Certifications are often seen as the benchmark needed to enter into and advance in specific industries. Help prepare your students for these industries with courses that align to certifications.



✓ Certification exam costs included

### MEDICAL

- Advanced Hospital Coding and CCS Prep ✓
- Advanced Medical Interpreter
- Certified Clinical Medical Assistant (CCMA) ✓
- Certified Clinical Medical Assistant for Experienced CMAA ✓
- Certified Clinical Medical Assistant (CCMA) + Certified Electronic Health Records Specialist (CEHRS) ✓
- Certified Electronic Health Records Specialist (CEHRS) ✓
- Certified Health Unit Coordinator ✓
- Certified Healthcare and Eldercare Mediator
- Certified Inpatient Coder ✓
- Certified Medical Transcriptionist ✓
- Certified Medical Administrative Assistant (CMAA) ✓
- Certified Medical Administrative Assistant with Certified Electronic Health Records Specialist + Medical Terminology ✓
- Certified Medical Administrative Assistant with Medical Billing and Coding ✓
- Certified Outpatient Coder ✓
- Certified Pharmaceutical Sales Representative ✓
- Certified Physical Therapy Aide ✓
- Certified Professional Medical Auditor ✓
- Certified Risk Adjustment Coder ✓
- Clinical Dental Assistant
- Medical Billing and Coding ✓
- Medical Interpreter (Spanish/English)
- Medical Office Manager ✓
- Patient Care Technician ✓
- Pharmacy Technician ✓

### CONSTRUCTION AND TRADES

- HVAC/R Technician ✓
- Certified Indoor Environmentalist Prep
- Certified Indoor Air Quality Manager

### INFORMATION TECHNOLOGY

- AWS System Operations Certification Bundle ✓
- Certified Ethical Hacker ✓
- Certified Information Security Manager (CISM) ✓
- Certified Information Systems Auditor (CISA) ✓
- Certified Information Systems Security Professional (CISSP)
- Cisco CCNA Certification Training ✓
- CompTIA Advanced Security Practitioner (CASP) ✓
- CompTIA Certification Training: Network+, Security+ ✓
- CompTIA™ Linux+ ✓
- CompTIA Mobility+ ✓
- CompTIA Project+ ✓
- CompTIA™ A+ Certification Training ✓
- CompTIA™ Cloud+ Certification Training ✓
- CompTIA™ Network+ Certification Training ✓
- CompTIA™ Security+ Certification Training ✓
- Help Desk Analyst: Tier 1 Support Specialist
- Information Security Training ✓
- IT Foundations Bundle ✓
- ITIL Capability Expert ✓
- ITIL Foundation ✓
- ITIL Lifecycle Expert ✓
- Systems Security Certified Practitioner (SSCP) Training
- CompTIA Certification Training: ITF+ and A+ ✓
- CompTIA Certification Training: ITF+, A+, Network+, Security+ ✓
- VMware Certified Associate

### FITNESS

- AFAA Group Fitness Instructor ✓
- NASM Certified Personal Trainer + Corrective Exercise ✓
- NASM Certified Personal Trainer + Performance Enhancement ✓
- NASM Certified Personal Trainer and Exam Preparation ✓
- NASM Corrective Exercise Specialist (CES) ✓
- NASM Performance Enhancement Specialist (PES) ✓
- NASM Certified Nutrition Coach ✓
- NASM Certified Personal Trainer + AFAA Group Fitness Instructor ✓
- NASM Certified Personal Trainer (Spanish) ✓
- NCSF Certified Strength Coach ✓
- NCSF Sports Nutrition Specialist ✓

ed2go.com | 307.532.8323





## BUSINESS

Accounts Payable Manager Certification ✓  
Accounts Payable Specialist Certification ✓  
Career Counselor and Life Coach  
Certified Administrative Professional  
Certified Administrative Professional w/ MS Office Master 2019 ✓  
Certified Administrative Professional w/ MS Office Specialist 2019 ✓  
Certified Bookkeeper ✓  
Certified Credit Counselor ✓  
Certified Credit Counselor and Certified Financial Health Counselor ✓  
Certified Financial Health Counselor ✓  
Certified Global Business Professional  
Certified Green Supply Chain Professional ✓  
Certified Internal Auditor  
Certified Internal Auditor with Microsoft Excel 2019 ✓  
Certified Quality Auditor ✓  
Certified Quality Engineer ✓  
Certified Quality Improvement Associate (CQIA)  
Certified Six Sigma Black Belt  
Certified Six Sigma Green Belt ✓  
Chartered Tax Professional  
Chartered Tax Professional for California Residents  
Chartered Tax Professional with Microsoft Excel 2019 ✓  
Court Interpreter (Spanish/English)  
Executive Assistant ✓  
Executive Assistant with Microsoft Office Specialist 2019 ✓  
Financial and Career Coach ✓  
IC3 Digital Literacy GS5 ✓  
Human Resources Professional ✓  
Lean Six Sigma Black Belt ✓  
Lean Six Sigma Black Belt with 1-on-1 Project Coaching ✓  
Lean Six Sigma Champion ✓  
Lean Six Sigma Green Belt ✓  
Lean Six Sigma Yellow Belt ✓  
Lean Training ✓  
Office Manager ✓  
Mastering Project Management with Microsoft Project 2019  
PMI Risk Management Professional ✓  
Payroll Manager  
Payroll Practice and Management  
Payroll Practice and Management with Microsoft Excel 2019 ✓  
Project Management Essentials with CAPM Prep  
Senior Professional In Human Resources  
Six Sigma Yellow Belt ✓  
Student Loan Counselor ✓  
The Complete Project Manager: CAPM and PMP Prep  
The Complete Project Manager: MS Project 2019 (Software Included)  
Records Management Certificate with Microsoft Office Specialist 2019 ✓  
Records Management Certificate with Microsoft Office Master 2019 ✓

## COMPUTER APPLICATIONS

AutoCAD 3D 2021  
AutoCAD 2021 Certified User ✓  
AutoCAD 2021 Certified User with AutoCAD 3D 2021 ✓  
Autodesk Fusion 360 ✓  
Autodesk Inventor 2021 ✓  
Autodesk Revit Architecture 2021 ✓  
Implementing Microsoft Azure Infrastructure Solutions ✓  
Microsoft Access 2019 Certification Training ✓  
Microsoft Excel 2019 Certification Training ✓  
Microsoft Office Master 2019 Certification Training ✓  
Microsoft Office Specialist 2019 (MOS) Certification Training ✓  
Microsoft Outlook 2019 Certification Training ✓  
Microsoft PowerPoint 2019 Certification Training ✓  
Microsoft Word 2019 Certification Training ✓

## MARKETING AND SALES

OMCA Content Marketing Associate ✓  
OMCA Conversion Optimization Associate ✓  
OMCA Display Advertising Associate ✓  
OMCA Email Marketing Associate ✓  
OMCA Mobile Marketing Associate ✓  
OMCA PPC Associate ✓  
OMCA SEO Associate ✓  
OMCA Social Media Associate ✓  
OMCA Web Analytics Associate ✓  
OMCP Digital Analytics and Conversion Professional ✓  
OMCP Email Marketing and Automation Professional ✓  
OMCP Paid Search Professional ✓  
OMCP Search Marketing Professional ✓  
OMCP Social and Mobile Marketing Professional ✓

## HOSPITALITY

Travel Agent Training ✓  
Certified Master Wedding and Event Planner ✓

## MISCELLANEOUS

Adobe Certified Associate ✓  
Certified Residential Interior Designer ✓  
Certified Paralegal ✓  
Digital Court Reporter  
Digital Court Reporter and Legal Transcription  
Legal Transcriptionist

✓ Certification exam costs included

# Ellbogen Scholarship

## Award Amounts

- \$1500/semester • maximum award for a full-time student (12+ credit hours)
- \$1250/semester • maximum award for ¾ time student (9-11 credit hours)
- \$750/semester • maximum award for part-time student (6-8 credit hours)

## Maximum Award

Up to two academic years (4 consecutive semesters). May include one summer semester for students maintaining continuous enrollment and meeting all eligibility requirements.

## Requirements

- Students 24 years of age or older.
- Students must demonstrate Wyoming residency of at least three years immediately preceding their application.
- Preference will be given to students who have NOT already earned an Associate Degree or higher.
- Students must have a current Free Application for Federal Student Aid (FAFSA) on file for the academic year the student is applying for and have unmet financial need.
- Students must enroll in an approved program.

**In addition to our certification courses, we offer hundreds of other titles for career training and personal and professional development.**

Start an online course today!

ed2go.com | 307.532.8323

ed2go

1220-07

# EWC CONCURRENT & DUAL ENROLLMENT CLASSES AT

GUERNSEY-SUNRISE HIGH SCHOOL  
WHEATLAND HIGH SCHOOL

Wyoming believes in its young people and proves it by offering qualified high school students a chance to take college classes for FREE. Concurrent and Dual Enrollment classes are offered through Eastern Wyoming College. These classes count for both high school and college credit. Concurrent Enrollment courses are taught by EWC approved high school teachers at Guernsey-Sunrise High School and Wheatland High School.

Dual Enrollment courses are college courses taught by EWC and are taught at Guernsey-Sunrise High School and Wheatland High School.

- Students get a chance to try out college classes and earn credits toward a two year or four year degree or career/technical certificate.
- If students apply themselves, they could earn a degree or certificate by the time they graduate from high school.
- Students will discover this program is a two-for-one deal: classes count for both high school graduation and college credit.
- Students will be challenged through rigorous college classes while getting a running start at college.
- If a student is a senior, they will avoid "senioritis" by taking relevant classes and starting a college degree or certificate program.
- Students will save money when they go to college because they will not have to stay as long or pay for as many classes. And, the Hathaway Scholarship dollars will stretch further.

Students can enroll in classes at Guernsey-Sunrise High School or Wheatland High School if they are eligible and have met course requirements. For more information, students need to contact the EWC Coordinator or high school counselor.

**For more information contact:**

**Karen Posten**  
307.532-8349  
kposten@ewc.wy.edu

**Tamara Stenson**  
PCSD#1 EWC Outreach Coordinator  
307.322.2433  
tstenson@ewc.wy.edu

# Charge into Your Future

## In Nursing

[ewc.wy.edu](http://ewc.wy.edu)  
307-624-7000



800 South Wind River Drive, Douglas, Wyoming, 82663

