

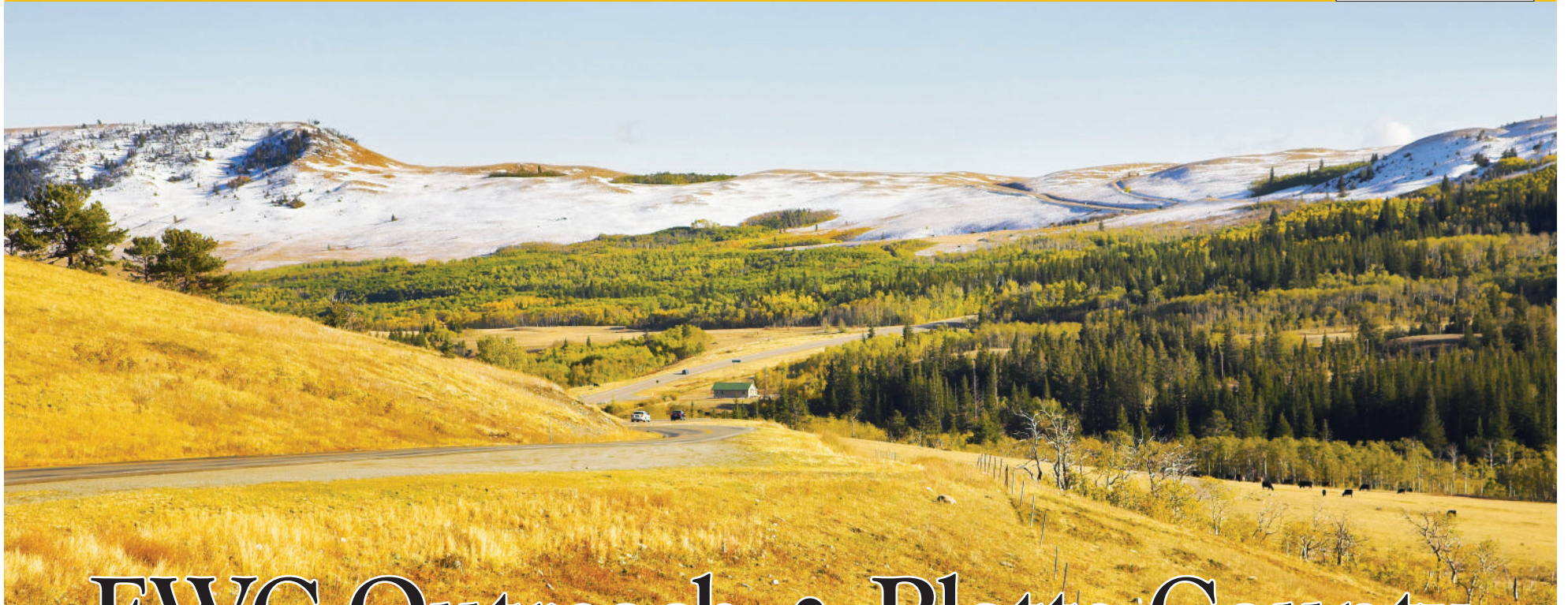


# Platte County

SPRING 2025 • COMMUNITY ED & CREDIT CLASSES

NONPROFIT ORG  
US POSTAGE  
PAID  
TORRINGTON, WY  
82240  
PERMIT NO. 14

**ECRWSS**



## EWC Outreach • Platte County



**Guernsey Community Education**  
[ewc.wy.edu/about-ewc/outreach/guernsey/](http://ewc.wy.edu/about-ewc/outreach/guernsey/)  
**Lori Ibarra**  
Guernsey Community Education  
[libarra@ewc.wy.edu](mailto:libarra@ewc.wy.edu)  
Guernsey-Sunrise High School  
172 W. Burlington, Room 218  
Guernsey, Wyoming 82214  
877-202-1020  
Cell • 307.401.2081  
Fax • 307.293.8040



**Wheatland Community Education**  
[ewc.wy.edu/about-ewc/outreach/wheatland/](http://ewc.wy.edu/about-ewc/outreach/wheatland/)  
**Tamara Stenson**  
PCSD #1 Community Ed Coordinator  
[tstenson@ewc.wy.edu](mailto:tstenson@ewc.wy.edu)

Wheatland High School  
1207 12th St.  
PHS room #139  
307.322.2433



**Guernsey Outreach**  
[ewc.wy.edu/about-ewc/outreach/guernsey/](http://ewc.wy.edu/about-ewc/outreach/guernsey/)  
**Karen Posten**  
[kposten@ewc.wy.edu](mailto:kposten@ewc.wy.edu)  
For appointment please call •  
307.532.8349



### EWC Board of Trustees

- Ms. Jackie Van Mark, Chair
- Mr. Rick Vonburg, Vice Chair
- Ms. Katherine Patrick, Treasurer
- Mr. Randy Adams, Secretary
- Mr. Bob Baumgartner
- Mr. Doug Mercer
- Mr. Kurt Sittner
- Mr. Jim Willox, Converse County Advisory Member



### EWC President

**Dr. Jeffrey D. Hawes**  
[jhawes@ewc.wy.edu](mailto:jhawes@ewc.wy.edu)

### Vice President of Douglas Campus

**Dr. Margaret Farley**  
307.624.7000  
[mfarley@ewc.wy.edu](mailto:mfarley@ewc.wy.edu)



# How to Register for Community Ed Classes



## GUERNSEY OUTREACH

Online\*  
Lori Ibarra  
Guernsey Community Education  
libarra@ewc.wy.edu

EWC website:  
ewc.wy.edu/about-ewc/outreach/guernsey/  
—the fastest way to register!

Phone\*  
877.202.1020 or  
307.401.2081  
Call during office hours or leave a  
message with your name, contact  
information and class(es) you are  
interested in.

Mail\*  
Send your registration to EWC Guernsey  
Outreach, PO Box 189, Guernsey, WY  
82214

Walk-in\*  
Guernsey-Sunrise High School.  
Drop off your registration form and  
payment.

## WHEATLAND OUTREACH

Online\*  
Tamara Stenson  
Wheatland Community Education  
tstenson@ewc.wy.edu

EWC website:  
ewc.wy.edu/about-ewc/outreach/  
wheatland/  
—the fastest way to register!

Phone\*  
307.322.2433  
Call during office hours or leave a  
message with your name, contact  
information and class(es) you are  
interested in.

Office Hours\*  
Hours - 7:30 a.m. - 4 p.m.

Walk-in\*  
Wheatland High School  
Peak High School Room 139  
Drop off your registration form and  
payment during office hours

EWC is accredited by the American Welding Society, the American Veterinary Medical Association, and the Accreditation Commission for Education in Nursing (ACEN)

The Higher Learning Commission of the North Central Association of Colleges & Schools  
230 South LaSalle Street, Suite 7-500  
Chicago, IL 60604  
Telephone: 800.621.7440/312.263.0456  
Fax: 312.263.7462  
info@hlcommission.org  
www.ncahlc.org

Eastern Wyoming College is an affirmative action/equal opportunity institution.

The information contained herein is valid as of August 2024. While EWC makes every effort to ensure the accuracy of the information, the college reserves the right to make changes at any time without prior notice. Always check with the appropriate office for current information.

The EWC Schedule summarizes information of interest to students; it is not a complete statement of programs and policies. Other important information is published in the EWC Catalog and on the EWC Website.

## Wheatland • Classes

Please call Tamara Stenson 307-322-2433 if you are interested in taking a class. Registration is required for all offerings. Classes run that are full. When necessary additional sessions of a class can be added. Classes of interest may be added throughout the semester, so please watch for new offerings to be posted.

**WHEATLAND OUTREACH** will be offering classes throughout the semester for both kids and adults. Classes will include Kids Winter Activities, Kids Valentine's Day Cupcake Decorating, Adult Super Bowl Charcuterie, Kids Painting, Kids Easter Egg Dying, Adult Spring Crafts, Kids May Day Baskets, and more. Watch for more information on upcoming classes.

### HISSET

#### Instructor Jeff Wilhelm

This course is designed to assist students who want to earn their High School equivalency certification. The final exam in the course is online through HiSET (hiset.org). There are five parts including Language Arts Reading, Language Arts Writing, Mathematics, Science, and Social Studies. The cost to the student is \$53.75 for the five assessments with two free retakes for each one. The cost of the class is covered by

grant funds. Classes meet on Tuesday and Thursday afternoons from 1:30 to 3:30 and from 6-8 p.m. on Wednesday evenings. The classroom is located on the Wheatland High School campus (1207 12th street), Room 139.

### SUBSTITUTE TEACHING PERMIT INFORMATION

Do you enjoy working with students! If you're interested in becoming a Substitute Teacher contact Tamara Stenson and she'll assist you with the process of how to apply for your Substitute Teacher Permit.

### DRIVERS EDUCATION

This course teaches Drivers Education and traffic safety according to Wyoming laws. The course requires 30 hours of classroom instruction and 6 hours of driving time behind the wheel. Students are required to keep record of 50 hours of parent super-

vised driving in order to get their driver's license. Parents may be eligible for insurance discounts for your child completing Drivers Education. Please check with your insurance company.

### FIRST AID/CPR

This class is for those who need their certification or renewal. This class is instructor led with hands on learning. You'll use a manikin to demonstrate your knowledge of First Aid, CPR, and AED. Passing test scores are required for certification. Certification is good for 2 years. Certification requires renewal every 2 years.



# Wheatland • Classes

## CNA I - CERTIFIED NURSING ASSISTANT

The CNA course prepares students to work in long term care facilities and hospitals by teaching them skills to assist patients with their daily needs. Includes lecture, labs, and clinical time. 4 credit hours.

## CNA II - CERTIFIED NURSING ASSISTANT II

Continuing education gather from a CNA to expand their abilities and knowledge to provide better patient care. 1 credit hour.



## MA - MEDICATION AIDE

The course prepares a student to assume the role and responsibilities of a Medication Aide after successfully completing a 40-hour CNA II course. 4 credit hours.

**Contact Tamara Stenson at 307-322-2433 or by email, [tstenson@ewc.wy.edu](mailto:tstenson@ewc.wy.edu) for more information on any of these classes.**

# Guernsey • Classes

Please call Lori Ibarra at 1-877-202-1020 or 307-401-2081 if you are interested in taking a class. Registration is required for all offerings. Classes run that are full. When necessary additional sessions of a class can be added. Classes of interest may be added throughout the semester, so please watch for new offerings to be posted on the Guernsey-Sunrise Schools Facebook page or on the Tri-City Parks and Recreation District Facebook page or through emails.

## BEADED PIPE CLEANER PEOPLE, BUTTERFLIES AND DRAGONFLIES



We are ready to celebrate the coming of spring! Let's have some fun with beads and make your own beaded person and either a butterfly or a dragonfly. All students are welcome!

**When: February 28, 2025**

**Time: 1:30-2:15 pm**

**Where: G-S High School Library Cost: \$5**

## FELT BEAD ESSENTIAL OIL DIFFUSER

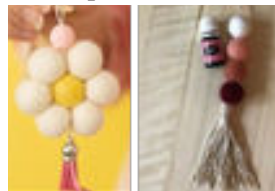
This felt bead diffuser is just perfect for the car, work, the kitchen or anywhere you want to have your favorite scent. Form your beads into a daisy and it will be a nod to spring and summer days. Make it your own by adding beads, a tassel, a hanger or a clip. All supplies and accessories will be provided. You can make two!

**When: February 26, 2025**

**Cost is \$15/2**

**Time: 6 PM**

**Where: GS High School Library**



## MAY DAY BASKETS

This is always a fun activity! Keep the tradition of spreading joy to your neighbors and friends. Join us for an afternoon of making May Day baskets that you can take home to share.

**Date: April 28, 2025**

**When: 3:30-4:15 pm**

**Where: G-S High School Library**

**Cost: \$5**

## PRESSED FLOWER LANTERN

Turn a plain glass jar into a pretty spring craft. Decoupage dried flowers onto the jar to make a sweet centerpiece for your spring and summer tables. They are perfect for gifts or party favors! All supplies will be provided, so come and join us in making your very own pressed flower lantern!



**Date: March 19, 2025**

**Time: 6 PM**

**Cost: \$15**

**Location: GS High School Library**

## TACO SALAD AND QUESO DIP

Make delicious taco salad and queso dip. Taco salad is a quick and easy meal to prepare and it's yummy to eat. Take your salad home in a large salad bowl to share with your family. All ingredients provided.

**Date: Wednesday, April 30, 2025**

**Time: 6 pm**

**Where: TBD**

**Cost: \$35**

## Driver's Education Class

We are planning to provide a driver's education class this spring. Please let us know if you have a student who would be interested in attending the class.

**More details and information to come!**

# EWC SPRING 2025 Online Classes

## ACCT Accounting-Business

Max	Course	Number	Sec	Title	Hrs	Fee	Bldg	Rm	Act		Days	Time	Faculty	Begin Date	End Date
5	ACCT	0099	40	Program Assessment Activity	0.0				OIND	NS		TBA		1/13/2025	5/8/2025
20	ACCT	2010	40	Principles of Accounting I	3.0	\$25.00			OLEC	NETA		Online	G. Vanderpal	1/13/2025	5/8/2025
20	ACCT	2020	40	Principles of Accounting II	3.0	\$25.00			OLEC	NETA		Online	G. Vanderpal	1/13/2025	5/8/2025
20	ACCT	2110	40	Quickbooks Accounting	2.0	\$25.00			OLEC	NETA		Online	G. Vanderpal	1/13/2025	5/8/2025

## AGEC Agricultural Economics

Max	Course	Number	Sec	Title	Hrs	Fee	Bldg	Rm	Act		Days	Time	Faculty	Begin Date	End Date
20	AGEC	2300	40	Agricultural Marketing	2.0	\$25.00			OLEC	NETA		Online	G. Hawkes	1/13/2025	5/8/2025

## AGBP Agriculture Beef Production

Max	Course	Number	Sec	Title	Hrs	Fee	Bldg	Rm	Act		Days	Time	Faculty	Begin Date	End Date
5	AGBP	0099	40	Program Assessment Activity	0.0				IND	NS		TBA	G. Younglove	1/13/2025	5/8/2025

## ANSC Animal Science-Agricul.

Max	Course	Number	Sec	Title	Hrs	Fee	Bldg	Rm	Act		Days	Time	Faculty	Begin Date	End Date
20	ANSC	1010	40	Intro to Animal Science	4.0	\$25.00			OLEC	NETA		Online	G. Younglove	1/13/2025	5/8/2025
20	ANSC	L006	40	ANSC 1010 Lab	0.0				OLAB	NETA		Online	G. Younglove	1/13/2025	5/8/2025

## ANTH Anthropology

Max	Course	Number	Sec	Title	Hrs	Fee	Bldg	Rm	Act		Days	Time	Faculty	Begin Date	End Date
20	ANTH	1200	40	Intro to Cultural Anthropology	3.0	\$25.00			OLEC	NETA		Online	S. Howard	1/13/2025	5/8/2025
20	ANTH	1300	40	Intro to Archaeology	3.0	\$25.00			OLEC	NETA		Online	S. Howard	1/13/2025	5/8/2025

## ART Art

Max	Course	Number	Sec	Title	Hrs	Fee	Bldg	Rm	Act		Days	Time	Faculty	Begin Date	End Date
20	ART	1010	40	Intro to Art	3.0	\$25.00			OLEC	NETA		Online	R. Clause	1/13/2025	5/8/2025
20	ART	2020	40	Art History II	3.0	\$25.00			OLEC	NETA		Online	R. Clause	1/13/2025	5/8/2025

## BADM Business Administration

Max	Course	Number	Sec	Title	Hrs	Fee	Bldg	Rm	Act		Days	Time	Faculty	Begin Date	End Date
20	BADM	0099	40	Program Assessment Activity	0.0				OIND	NS		Online	G. Hawkes	1/13/2025	5/8/2025
20	BADM	1000	40	Intro to Business	3.0	\$25.00			OLEC	NETA		Online	G. Hawkes	1/13/2025	5/8/2025
10	BADM	1395	40	Business Administration Capstone	3.0	\$25.00			OLEC	NETA		Online	G. Hawkes	1/13/2025	5/8/2025

## BARB Barbering Technology

Max	Course	Number	Sec	Title	Hrs	Fee	Bldg	Rm	Act		Days	Time	Faculty	Begin Date	End Date
10	BARB	1520	40	Barb Shop Mgmt and Bus Methods	3.0	\$25.00			OLEC	NETA		Online	A. Lashley	3/6/2025	5/8/2025

## BIOL Biology

Max	Course	Number	Sec	Title	Hrs	Fee	Bldg	Rm	Act		Days	Time	Faculty	Begin Date	End Date
5	BIOL	0099	40	Program Assessment Activity	0.0				OIND	NS			C. Wenzel	1/13/2025	5/8/2025
20	BIOL	1000	40	Principles of Biology	4.0	\$25.00			OLEC	NETA		Online	C. Wenzel	1/13/2025	5/8/2025
20	BIOL	L004	40	BIOL 1000 Lab	0.0				OLAB	NETA		Online	C. Wenzel	1/13/2025	5/8/2025
10	BIOL	1009	40	Critical Science Skills	1.0	\$25.00			OLEC	NETA		Online	C. Wenzel	1/13/2025	5/8/2025
20	BIOL	1010	40	General Biology I	4.0	\$25.00			OLEC	NETA		Online	J. Ostrander	1/13/2025	5/8/2025
20	BIOL	L001	40	BIOL 1010 Lab	0.0				OLAB	NETA		Online	J. Ostrander	1/13/2025	5/8/2025

## CHEM Chemistry

Max	Course	Number	Sec	Title	Hrs	Fee	Bldg	Rm	Act		Days	Time	Faculty	Begin Date	End Date
20	CHEM	2300	40	Intro to Organic Chemistry	4.0	\$25.00			OLEC	NETA		Online	T. Ascherl	1/13/2025	5/8/2025

## COMM Communication/Mass Media

Max	Course	Number	Sec	Title	Hrs	Fee	Bldg	Rm	Act		Days	Time	Faculty	Begin Date	End Date
20	COMM	1030	40	Interpersonal Communication	3.0	\$25.00			OLEC	NETA		Online	E. Koc	1/13/2025	5/8/2025
20	COMM	1040	40	Intro to Communication Theory	3.0	\$25.00			OLEC	NETA		Online	E. Koc	1/13/2025	5/8/2025
20	COMM	2010	40	Public Speaking	3.0	\$25.00			OLEC	NETA		Online	E. Koc	1/13/2025	5/8/2025
20	COMM	2010	41	Public Speaking	3.0	\$25.00			OLEC	NETA		Online	E. Koc	1/13/2025	5/8/2025
20	COMM	2010	42	Public Speaking	3.0	\$25.00			OLEC	NETA		Online	E. Koc	1/13/2025	5/8/2025

## CRMJ Criminal Justice

Max	Course	Number	Sec	Title	Hrs	Fee	Bldg	Rm	Act		Days	Time	Faculty	Begin Date	End Date
20	CRMJ	2040	40	Police Science I	3.0	\$25.00			OLEC	NETA		Online	R. Cornish	1/13/2025	5/8/2025
20	CRMJ	2130	40	Criminal Investigation I	3.0	\$25.00			OLEC	NETA		Online	R. Cornish	1/13/2025	5/8/2025
20	CRMJ	2210	40	Criminal Law I	3.0	\$25.00			OLEC	NETA		Online	R. Cornish	1/13/2025	5/8/2025
20	CRMJ	2395	40	Criminal Justice Capstone Project	1.0	\$25.00			OLEC	NETA		Online	R. Cornish	1/13/2025	5/8/2025
20	CRMJ	2420	40	Juvenile Justice	3.0	\$25.00			OLEC	NETA		Online	R. Cornish	1/13/2025	5/8/2025

## CSMO Cosmetology

Max	Course	Number	Sec	Title	Hrs	Fee	Bldg	Rm	Act		Days	Time	Faculty	Begin Date	End Date
30	CSMO	1600	40	Intro to Skin Technology	3.0	\$325.00			OLEC	NETA		Online	G. Zwiebel	1/13/2025	3/5/2025
10	CSMO	1600	41	Intro to Skin Technology	3.0	\$325.00			OLEC	NETA		Online	G. Zwiebel	1/13/2025	3/5/2025

## ECON Economics

Max	Course	Number	Sec	Title	Hrs	Fee	Bldg	Rm	Act		Days	Time	Faculty	Begin Date	End Date
24	ECON	1020	40	Microeconomics	3.0	\$25.00			OLEC	NETA		Online	G. Hawkes	1/13/2025	5/8/2025

## EDEL Education-Elementary

Max	Course	Number	Sec	Title	Hrs	Fee	Bldg	Rm	Act		Days	Time	Faculty	Begin Date	End Date
20	EDEL	2140	40	Teaching Literature in the Elem School	3.0	\$25.00			OLEC	NETA		Online	L. Smith	1/13/2025	5/8/2025

## EDEX Ed-Exceptional Children

Max	Course	Number	Sec	Title	Hrs	Fee	Bldg	Rm	Act		Days	Time	Faculty	Begin Date	End Date
20	EDEX	2484	40	Intro to Special Education	3.0	\$25.00			OLEC	NETA		Online	L. Smith	1/13/2025	5/8/2025

## EDFD Educational Foundations

Max	Course	Number	Sec	Title	Hrs	Fee	Bldg	Rm	Act		Days	Time	Faculty	Begin Date	End Date
20	EDFD	2020	40	Foundations of Education	3.0	\$25.00			OLEC	NETA		Online	L. Smith	1/13/2025	5/8/2025
20	EDFD	2450	40	Human Lifespan Development	3.0	\$25.00			OLEC	NETA		Online	C. Steinbock	1/13/2025	5/8/2025

## ENGL English

Max	Course	Number	Sec	Title	Hrs	Fee	Bldg	Rm	Act		Days	Time	Faculty	Begin Date	End Date
20	ENGL	1005	40	Applied Technical Writing	3.0	\$25.00			OLEC	NETA		Online	E. Cottrell	1/13/2025	5/8/2025
20	ENGL	1009	40	Co-Requisite for ENGL 1010	2.0	\$25.00			OLEC	NETA		Online	E. Cottrell	1/13/2025	5/8/2025
20	ENGL	1010	40	English I:Composition	3.0	\$25.00			OLEC	NETA		Online	E. Cottrell	1/13/2025	5/8/2025
20	ENGL	2020	40	Literature, Media, and Culture	3.0	\$25.00			OLEC	NETA		Online	K. Strampe	1/13/2025	5/8/2025

## FCSC Family & Consumer Science

Max	Course	Number	Sec	Title	Hrs	Fee	Bldg	Rm	Act		Days	Time	Faculty	Begin Date	End Date
20	FCSC	2121	40	Child Development	4.0	\$25.00			OLEC	NETA		Online	C. Steinbock	1/13/2025	5/8/2025

## HIST History

Max	Course	Number	Sec	Title	Hrs	Fee	Bldg	Rm	Act		Days	Time	Faculty	Begin Date	End Date
20	HIST	1211	40	U.S. to 1865	3.0	\$25.00			OLEC	NETA		Online	H. Gorman	1/13/2025	5/8/2025

## HMDV Human Development

Max	Course	Number	Sec	Title	Hrs	Fee	Bldg	Rm	Act		Days	Time	Faculty	Begin Date	End Date
20	HMDV	1000	40	College Studies	1.0	\$25.00			OLEC	NETA		Online		1/13/2025	3/5/2025
20	HMDV	1050	40	Study Strategies	2.0	\$25.00			OLEC	NETA		Online	D. Banville	3/6/2025	5/8/2025

## HMSV Human Services

Max	Course	Number	Sec	Title	Hrs	Fee	Bldg	Rm	Act		Days	Time	Faculty	Begin Date	End Date
99	HMSV	0010	40	Prescreen for Field Exp in Human Services	0.0	\$95.00			LEC	NS			C. Braddy	1/13/2025	5/8/2025
20	HMSV	1060	40	Case Management for Human Services	3.0	\$25.00			OLEC	NETA		Online	C. Braddy	1/13/2025	5/8/2025
20	HMSV	2460	40	Field Experience in Human Services II	3.0	\$25.00			OLEC	NETA		Online	C. Braddy	1/13/2025	5/8/2025

## INSTAA Interdisciplinary Studies AA

Max	Course	Number	Sec	Title	Hrs	Fee	Bldg	Rm	Act		Days	Time	Faculty	Begin Date	End Date
100	INSTAA	0099	40	Program Assessment Activity	0.0				OIND	NS		TBA	K. Strampe	1/13/2025	5/8/2025

## INSTAS Interdisciplinary Studies AS

Max	Course	Number	Sec	Title	Hrs	Fee	Bldg	Rm	Act		Days	Time	Faculty	Begin Date	End Date
100	INSTAS	0099	40	Program Assessment Activity	0.0				OIND	NS		TBA	S. Warren	1/13/2025	5/8/2025

## LIBS Library Science-Educ.

Max	Course	Number	Sec	Title	Hrs	Fee	Bldg	Rm	Act		Days	Time	Faculty	Begin Date	End Date
20	LIBS	1000	40	Library Research Methods	1.0	\$25.00			OLEC	NETA		Online	C. Debus	3/6/2025	5/8/2025

## MATH Mathematics

Max	Course	Number	Sec	Title	Hrs	Fee	Bldg	Rm	Act		Days	Time	Faculty	Begin Date	End Date
5	MATH	0950	40	Preparation for College Mathematics	1.0	\$25.00			OLEC	NETA		Online	J. Clark	1/13/2025	5/8/2025
12	MATH	0950	41	Preparation for College Mathematics	2.0	\$25.00			OLEC	NETA		Online	J. Clark	1/13/2025	5/8/2025
13	MATH	0950	42	Preparation for College Mathematics	3.0	\$25.00			OLEC	NETA		Online	J. Clark	1/13/2025	5/8/2025
20	MATH	1000	40	Problem Solving	3.0	\$25.00			OLEC	NETA		Online	S. Warren	1/13/2025	5/8/2025
20	MATH	1009	40	Problem Solving Workshop	1.0	\$25.00			OLAB	NETA		Online	J. Clark	1/13/2025	5/8/2025
20	MATH	1105	40	Data Analysis, Prob, Alg for Elem Sch Tchr	3.0	\$25.00			OLEC	NETA		Online	L. Krakow	1/13/2025	5/8/2025
20	MATH	1400	40	College Algebra	4.0	\$25.00			OLEC	NETA		Online	S. Warren	1/13/2025	5/8/2025
20	MATH	1405	40	Trigonometry	3.0	\$25.00			OLEC	NETA		Online	S. Warren	1/13/2025	5/8/2025
10	MATH	1409	40	College Algebra Workshop	1.0	\$25.00			OLAB	NETA		Online	J. Clark	1/13/2025	5/8/2025
20	MATH	2355	40	Mathematical Applications for Business	4.0	\$25.00			OLEC	NETA		Online	S. Warren	1/13/2025	5/8/2025

## MGT Management

Max	Course	Number	Sec	Title	Hrs	Fee	Bldg	Rm	Act		Days	Time	Faculty	Begin Date	End Date
20	MGT	2100	40	Principles of Management	3.0				OLEC	NETA		Online	J. Valk	1/13/2025	5/8/2025

## PEAC Activity-Phys & Hlth Edu

Max	Course	Number	Sec	Title	Hrs	Fee	Bldg	Rm	Act		Days	Time	Faculty	Begin Date	End Date
20	PEAC	1001	40	Health and Wellness	1.0	\$25.00			OLAL	NETA		Online	G. Hamilton	3/6/2025	5/8/2025

## PEAC Activity-Phys & Hlth Edu

Max	Course	Number	Sec	Title	Hrs	Fee	Bldg	Rm	Act		Days	Time	Faculty	Begin Date	End Date
20	PEAC	1001	40	Health and Wellness	1.0	\$25.00			OLAL	NETA		Online	G. Hamilton	3/6/2025	5/8/2025

## PEPR Physical Education Professional-Physical & Health Education

Max	Course	Number	Sec	Title	Hrs	Fee	Bldg	Rm	Act		Days	Time	Faculty	Begin Date	End Date
20	PEPR	2110	40	Foundations of Coaching	3.0	\$25.00			OLEC	NETA		Online	T. Larsen	1/13/2025	5/8/2025

## PHSC Pre Health Science

Max	Course	Number	Sec	Title	Hrs	Fee	Bldg	Rm	Act		Days	Time	Faculty	Begin Date	End Date
10	PHSC	0099	40	Program Assessment Activity	0.0				OIND	NS		TBA	J. Ostrander	1/13/2025	5/8/2025

## POLS Political Science

Max	Course	Number	Sec	Title	Hrs	Fee	Bldg	Rm	Act		Days	Time	Faculty	Begin Date	End Date
20	POLS	1000	40	American & Wyoming Government	3.0	\$25.00			OLEC	NETA		Online	A. Hilton	1/13/2025	5/8/2025
12	POLS	1100	40	Wyoming Government	1.0	\$25.00			OLEC	NETA		Online	E. Creagar	1/13/2025	5/8/2025

## PSYC Psychology

Max	Course	Number	Sec	Title	Hrs	Fee	Bldg	Rm	Act		Days	Time	Faculty	Begin Date	End Date
20	PSYC	1000	40	General Psychology	3.0	\$25.00			OLEC	NETA		Online	J. Hart	1/13/2025	5/8/2025
20	PSYC	1000	41	General Psychology	3.0	\$25.00			OLEC	NETA		Online	J. Hart	1/13/2025	5/8/2025
20	PSYC	1000	42	General Psychology	3.0	\$25.00			OLEC	NETA		Online	J. Hart	1/13/2025	5/8/2025
20	PSYC	2000	40	Research Psychological Methods	4.0	\$25.00			OLAL	NETA		Online	J. Hart	1/13/2025	5/8/2025
20	PSYC	2210	40	Drugs and Behavior	3.0	\$25.00			OLEC	NETA		Online	J. Hart	1/13/2025	5/8/2025

## SOC Sociology

Max	Course	Number	Sec	Title	Hrs	Fee	Bldg	Rm	Act		Days	Time	Faculty	Begin Date	End Date
20	SOC	1100	40	Social Problems	3.0	\$25.00			OLEC	NETA		Online		1/13/2025	5/8/2025

## SOSC Social Science

Max	Course	Number	Sec	Title	Hrs	Fee	Bldg	Rm	Act		Days	Time	Faculty	Begin Date	End Date
20	SOSC	2300	40	Ethics in Practice	3.0	\$25.00			OLEC	NETA		Online	R. Cornish	1/13/2025	5/8/2025
20	SOSC	2395	40	Social Science Capstone Exper	1.0	\$25.00			OLEC	NETA		Online	J. Hart	1/13/2025	5/8/2025

## STAT Statistics

Max	Course	Number	Sec	Title	Hrs	Fee	Bldg	Rm	Act		Days	Time	Faculty	Begin Date	End Date
20	STAT	2050	40	Fundamentals of Statistics	4.0	\$25.00			OLEC	NETA		Online	S. Warren	1/13/2025	5/8/2025

## ZOO Zoology

Max	Course	Number	Sec	Title	Hrs	Fee	Bldg	Rm	Act		Days	Time	Faculty	Begin Date	End Date
20	ZOO	2015	40	Human Anatomy	4.0	\$25.00			OLEC	NETA		Online	J. Ostrander	1/13/2025	5/8/2025
20	ZOO	L001	40	ZOO 2015 Lab	0.0			135	OLAB	NETA		Online	J. Ostrander	1/13/2025	5/8/2025
20	ZOO	2450	40	Fish and Wildlife Mgmt in Anthropocene	3.0	\$25.00			OLEC	NETA		Online	C. Wenzel	1/13/2025	5/8/2025



## EWC CONCURRENT & DUAL ENROLLMENT CLASSES AT GUERNSEY-SUNRISE HIGH SCHOOL WHEATLAND HIGH SCHOOL

Wyoming believes in its young people and proves it by offering qualified high school students a chance to take college classes for FREE. Concurrent and Dual Enrollment classes are offered through Eastern Wyoming College. These classes count for both high school and college credit. Concurrent Enrollment courses are taught by EWC approved high school teachers at Guernsey-Sunrise High School and Wheatland High School.

Dual Enrollment courses are college courses taught by EWC and are taught at Guernsey-Sunrise High School and Wheatland High School.

- Students get a chance to try out college classes and earn credits toward a two year or four year degree or career/technical certificate.
- If students apply themselves, they could earn a degree or certificate by the time they graduate from high school.
- Students will discover this program is a two-for-one deal: classes count for both high school graduation and college credit.
- Students will be challenged through rigorous college classes while getting a running start at college.
- If a student is a senior, they will avoid "senioritis" by taking relevant classes and starting a college degree or certificate program.
- Students will save money when they go to college because they will not have to stay as long or pay for as many classes. And, the Hathaway Scholarship dollars will stretch further.

Students can enroll in classes at Guernsey-Sunrise High School or Wheatland High School if they are eligible and have met course requirements. For more information, students need to contact the EWC Coordinator or high school counselor.

**For more information contact:**

**Karen Posten**  
307.532-8349  
kposten@ewc.wy.edu

**Tamara Stenson**  
PCSD#1 EWC Outreach Coordinator  
307.322.2433 tstenson@ewc.wy.edu

Eastern Wyoming College is dedicated to providing opportunities and recognizing the talent of all people within this institution. There is a commitment to a policy of equal employment opportunity for all persons on the basis of merit without regard to race, color, national origin, marital status, age, sexual orientation, sex, religion, political belief, veteran status or disability. In accordance with the policy, Eastern Wyoming College affirms its commitment to non-discrimination in its employment practices as they relate to recruitment, hiring, selection, screening, testing, compensation, promotion, employment benefits, educational opportunities, access to programs, work assignments, application of discipline, access to grievance procedures, and any and all other conditions of employment which are provided by Eastern Wyoming College policy, regulation, rule or practice. Inquiries concerning Title II, Title VI, Title VII, and Section 504, may be directed to the Director of Human Resources, 307.532.8330. Inquiries concerning Title IX may be directed to the Executive Dean of Student Services, 307.532.8257. Both may be reached at Eastern Wyoming College, 3200 West C Street, Torrington, WY 82240. Alternatively you may contact the Wyoming Department of Education, Office for Civil Rights Coordinator, 2300 Capitol Avenue, 2nd Floor, Cheyenne, WY 82002-0050 or 307.777.7675.



# Feels Like Home

Small Class  
Sizes

Affordable

Family  
Atmosphere

Scholarships  
Available

## Nursing Program

Contact Us Today [ewc.wy.edu](http://ewc.wy.edu) 307-532-8200

[nursing@ewc.wy.edu](mailto:nursing@ewc.wy.edu) Cohorts starting in Torrington & Douglas